

East Anglia THREE

Chapter 13

Offshore Ornithology Figures

Environmental Statement

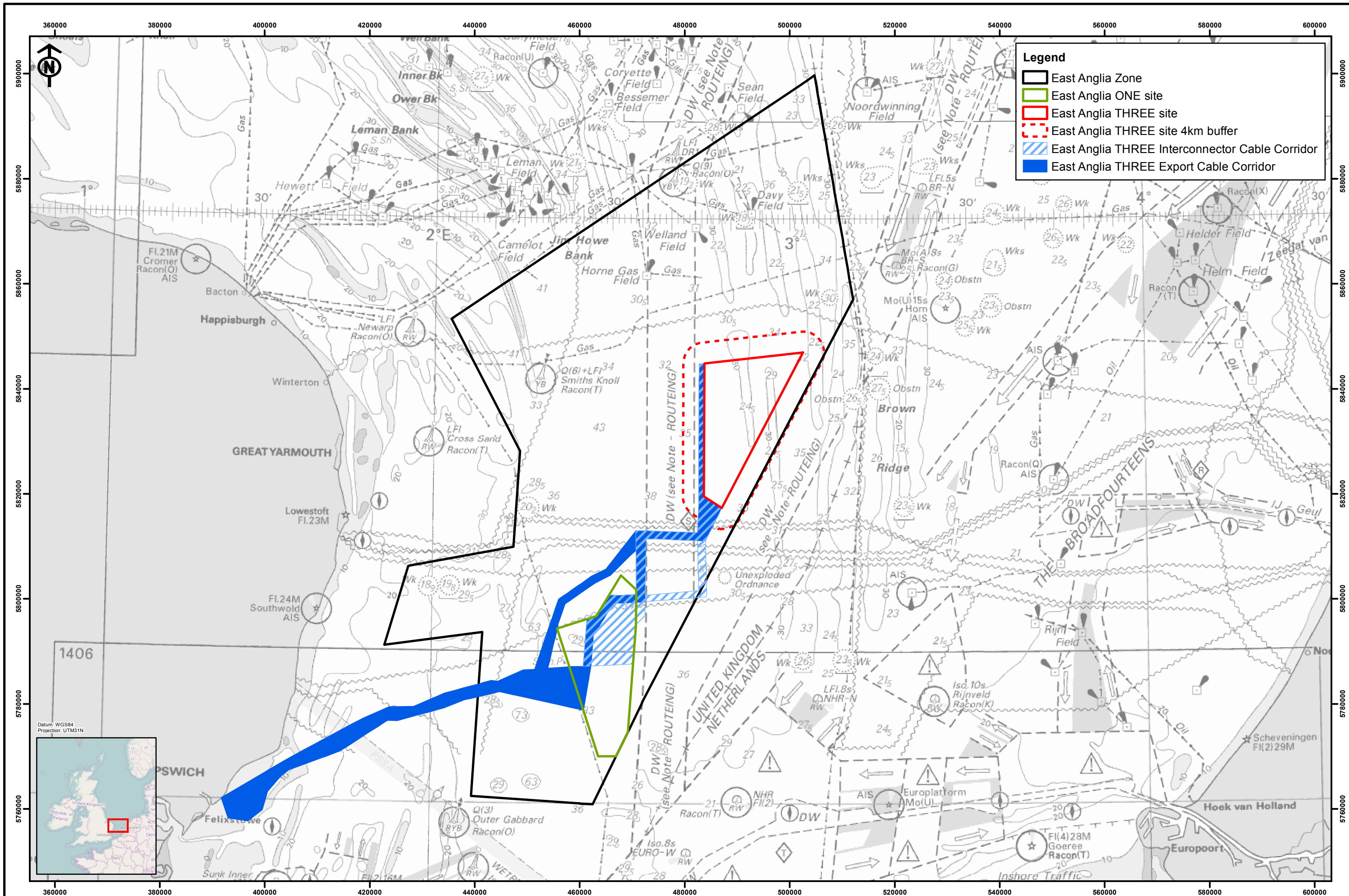
Volume 2

Document Reference – 6.2.13

Author – MacArthur Green
East Anglia THREE Limited
Date – November 2015
Revision History – Revision A

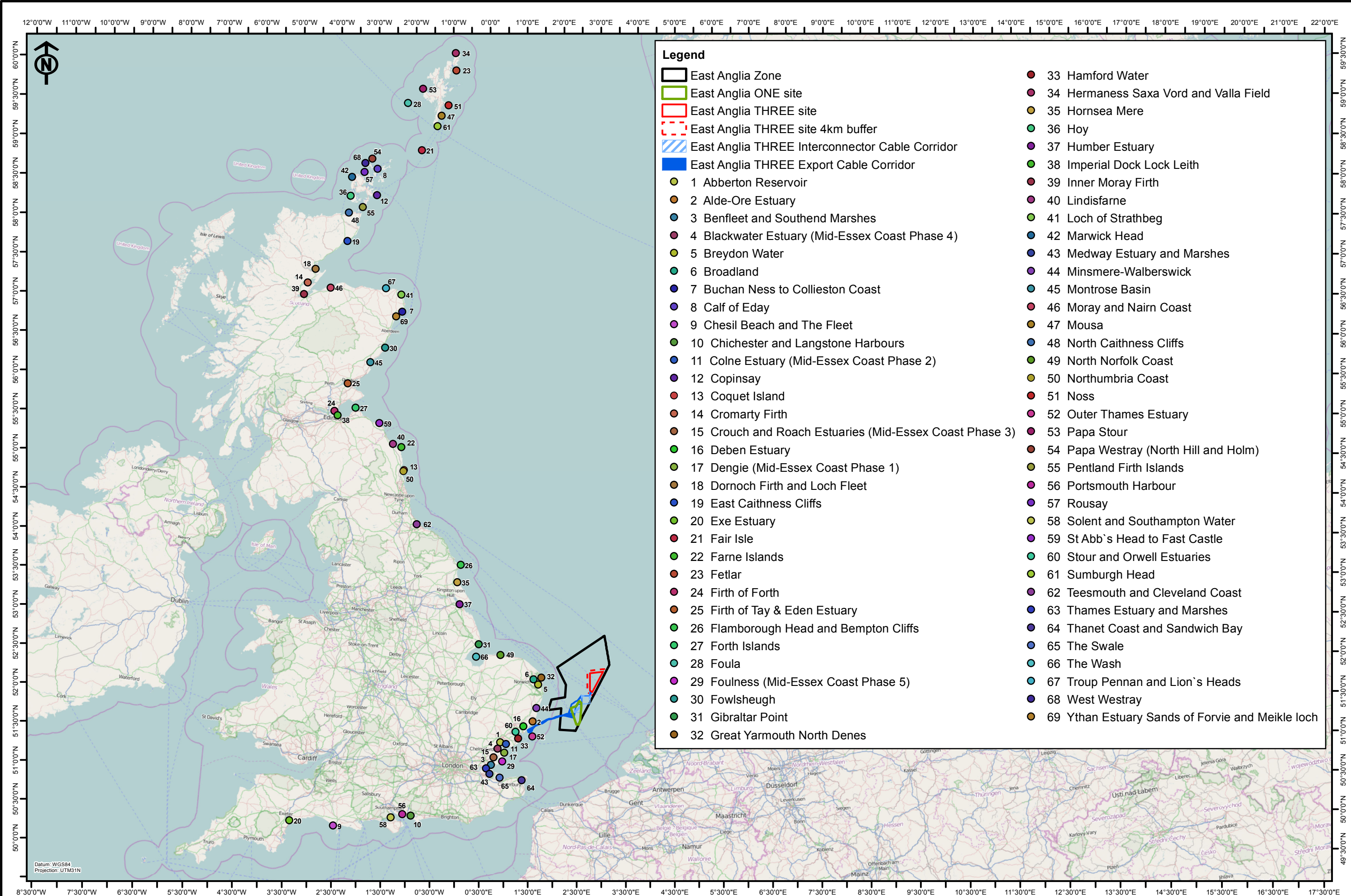


This Page is Intentionally Blank



Rev	Date	By	Comment
01	07/10/15	BJF	Second issue
0	15/07/15	BJF	First issue

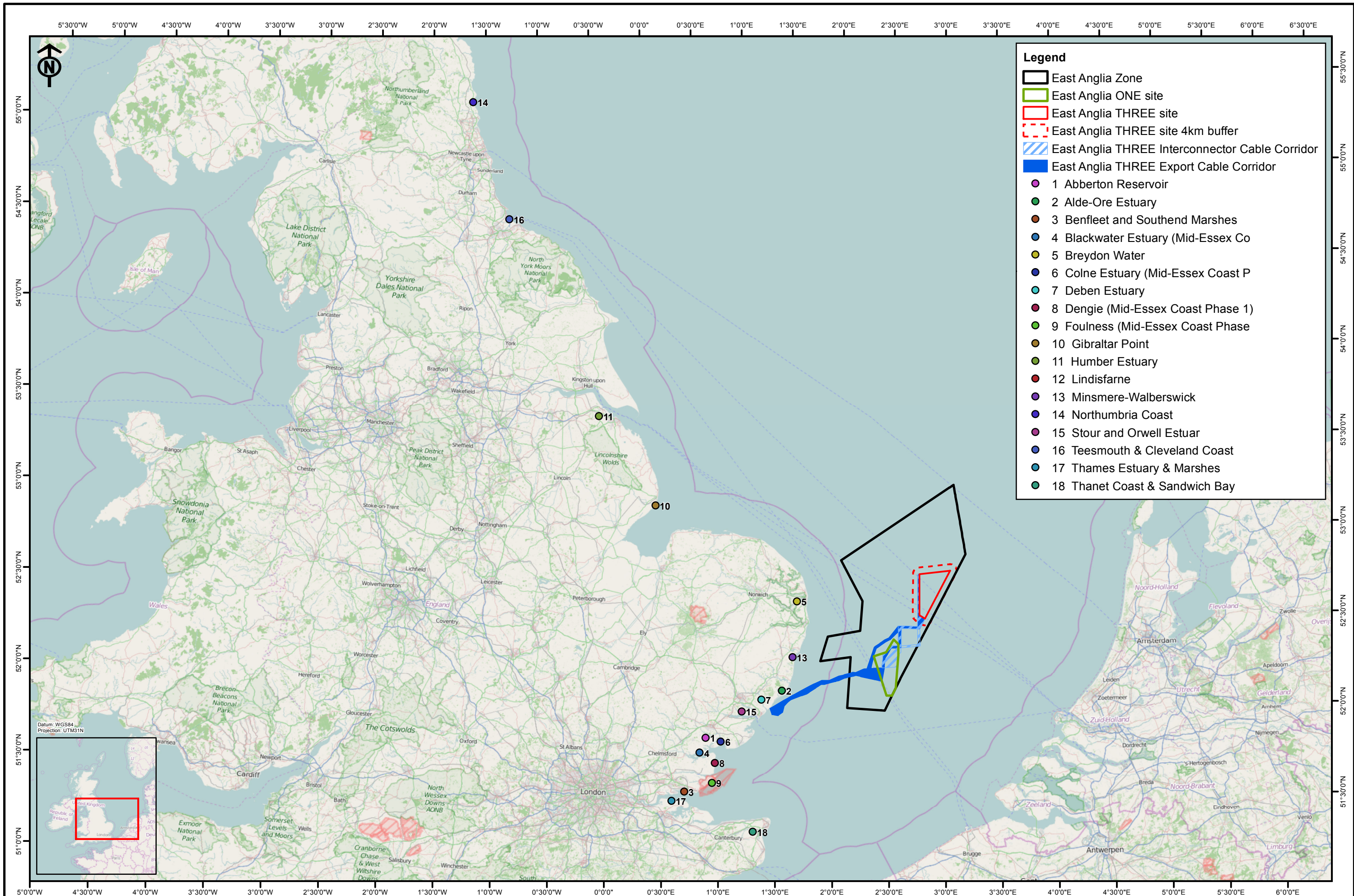
Drg No		Figure 13.1
Rev	01	
Date	07/10/15	
Layout	N/A	



- Legend**
- East Anglia Zone
 - East Anglia ONE site
 - East Anglia THREE site
 - East Anglia THREE site 4km buffer
 - East Anglia THREE Interconnector Cable Corridor
 - East Anglia THREE Export Cable Corridor
- 1 Abberton Reservoir
 - 2 Alde-Ore Estuary
 - 3 Benfleet and Southend Marshes
 - 4 Blackwater Estuary (Mid-Essex Coast Phase 4)
 - 5 Breydon Water
 - 6 Broadland
 - 7 Buchan Ness to Collieston Coast
 - 8 Calf of Eday
 - 9 Chesil Beach and The Fleet
 - 10 Chichester and Langstone Harbours
 - 11 Colne Estuary (Mid-Essex Coast Phase 2)
 - 12 Copinsay
 - 13 Coquet Island
 - 14 Cromarty Firth
 - 15 Crouch and Roach Estuaries (Mid-Essex Coast Phase 3)
 - 16 Deben Estuary
 - 17 Dengie (Mid-Essex Coast Phase 1)
 - 18 Dornoch Firth and Loch Fleet
 - 19 East Caithness Cliffs
 - 20 Exe Estuary
 - 21 Fair Isle
 - 22 Farne Islands
 - 23 Fetlar
 - 24 Firth of Forth
 - 25 Firth of Tay & Eden Estuary
 - 26 Flamborough Head and Bempton Cliffs
 - 27 Forth Islands
 - 28 Foula
 - 29 Foulness (Mid-Essex Coast Phase 5)
 - 30 Fowlsheugh
 - 31 Gibraltar Point
 - 32 Great Yarmouth North Denes
 - 33 Hamford Water
 - 34 Hermaness Saxa Vord and Valla Field
 - 35 Hornsea Mere
 - 36 Hoy
 - 37 Humber Estuary
 - 38 Imperial Dock Lock Leith
 - 39 Inner Moray Firth
 - 40 Lindisfarne
 - 41 Loch of Strathbeg
 - 42 Marwick Head
 - 43 Medway Estuary and Marshes
 - 44 Minsmere-Walberswick
 - 45 Montrose Basin
 - 46 Moray and Nairn Coast
 - 47 Mousa
 - 48 North Caithness Cliffs
 - 49 North Norfolk Coast
 - 50 Northumbria Coast
 - 51 Noss
 - 52 Outer Thames Estuary
 - 53 Papa Stour
 - 54 Papa Westray (North Hill and Holm)
 - 55 Pentland Firth Islands
 - 56 Portsmouth Harbour
 - 57 Rousay
 - 58 Solent and Southampton Water
 - 59 St Abb's Head to Fast Castle
 - 60 Stour and Orwell Estuaries
 - 61 Sumburgh Head
 - 62 Teesmouth and Cleveland Coast
 - 63 Thames Estuary and Marshes
 - 64 Thanet Coast and Sandwich Bay
 - 65 The Swale
 - 66 The Wash
 - 67 Troup Pennan and Lion's Heads
 - 68 West Westray
 - 69 Ythan Estuary Sands of Forvie and Meikle loch

	<table border="1" style="width: 100%; border-collapse: collapse;"> <thead> <tr> <th>Rev</th> <th>Date</th> <th>By</th> <th>Comment</th> </tr> </thead> <tbody> <tr> <td>01</td> <td>07/10/15</td> <td>BJF</td> <td>Second issue</td> </tr> <tr> <td>0</td> <td>15/07/15</td> <td>BJF</td> <td>First issue</td> </tr> </tbody> </table>	Rev	Date	By	Comment	01	07/10/15	BJF	Second issue	0	15/07/15	BJF	First issue	Original A3 Plot Scale 1:5,000,000		East Anglia THREE Limited SPAs in Relation to East Anglia THREE Site	<table border="1" style="width: 100%; border-collapse: collapse;"> <tr> <td>Drg No</td> <td></td> </tr> <tr> <td>Rev</td> <td>01</td> </tr> <tr> <td>Date</td> <td>07/10/15</td> </tr> <tr> <td>Layout</td> <td>N/A</td> </tr> </table>	Drg No		Rev	01	Date	07/10/15	Layout	N/A
Rev	Date	By	Comment																						
01	07/10/15	BJF	Second issue																						
0	15/07/15	BJF	First issue																						
Drg No																									
Rev	01																								
Date	07/10/15																								
Layout	N/A																								

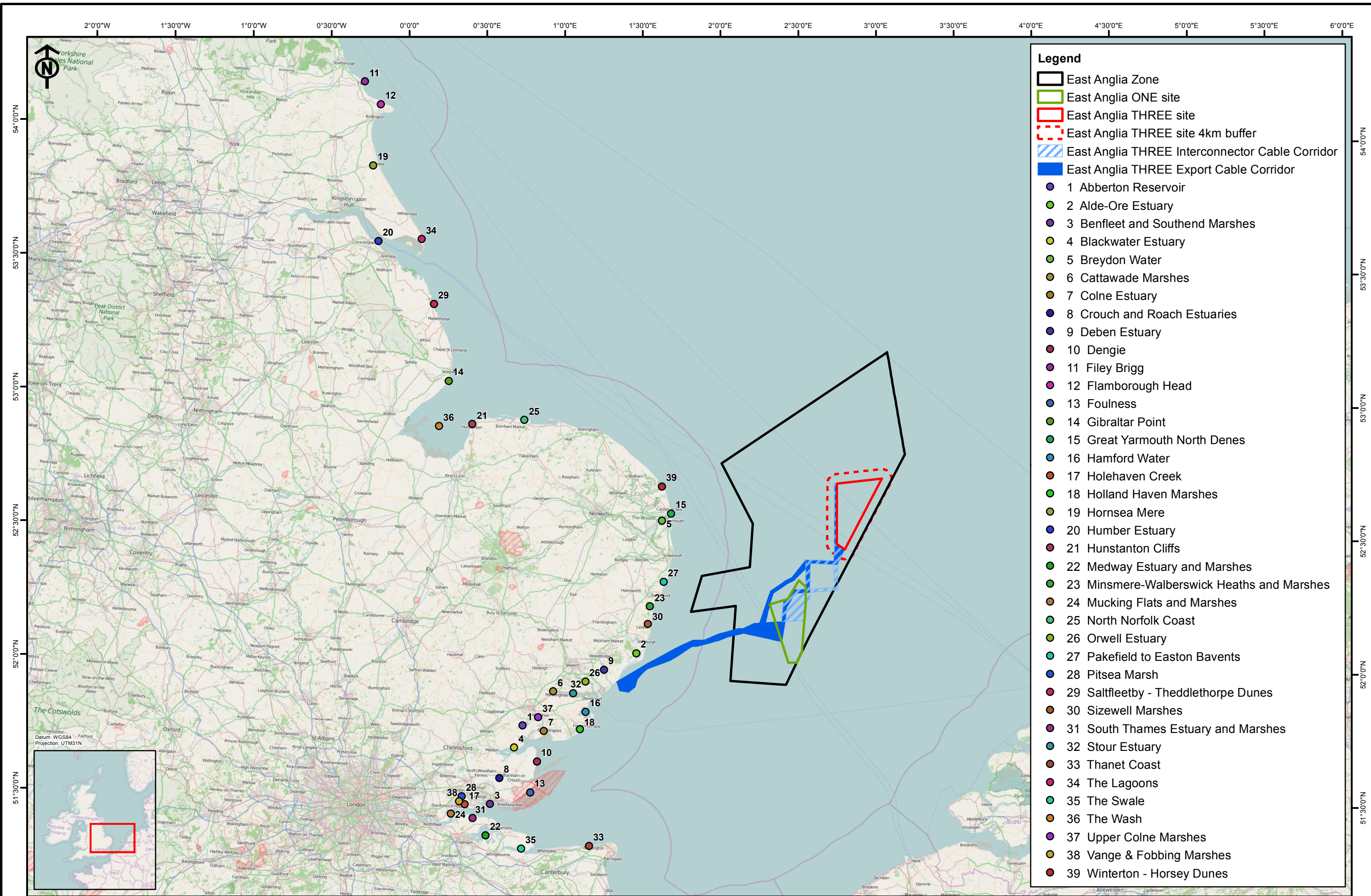
© OpenStreetMap (and) contributors. CC-BY-SA
© Crown copyright. All rights reserved. Natural England 2015.
© Scottish Natural Heritage 2015.
© East Anglia Offshore Wind Limited 2015



Rev	Date	By	Comment
01	07/10/15	BJF	Second issue
0	15/07/15	BJF	First issue

Drg No		Figure 13.3
Rev	01	
Date	07/10/15	
Layout	N/A	

Ref: Ramsar (Subset)



- Legend**
- East Anglia Zone
 - East Anglia ONE site
 - East Anglia THREE site
 - East Anglia THREE site 4km buffer
 - East Anglia THREE Interconnector Cable Corridor
 - East Anglia THREE Export Cable Corridor
- 1 Abberton Reservoir
 - 2 Alde-Ore Estuary
 - 3 Benfleet and Southend Marshes
 - 4 Blackwater Estuary
 - 5 Breydon Water
 - 6 Cattwade Marshes
 - 7 Colne Estuary
 - 8 Crouch and Roach Estuaries
 - 9 Deben Estuary
 - 10 Dengie
 - 11 Filey Brigg
 - 12 Flamborough Head
 - 13 Foulness
 - 14 Gibraltar Point
 - 15 Great Yarmouth North Denes
 - 16 Hamford Water
 - 17 Holehaven Creek
 - 18 Holland Haven Marshes
 - 19 Hornsea Mere
 - 20 Humber Estuary
 - 21 Hunstanton Cliffs
 - 22 Medway Estuary and Marshes
 - 23 Minsmere-Walberswick Heaths and Marshes
 - 24 Mucking Flats and Marshes
 - 25 North Norfolk Coast
 - 26 Orwell Estuary
 - 27 Pakefield to Easton Bavents
 - 28 Pitsea Marsh
 - 29 Saltfleetby - Theddlethorpe Dunes
 - 30 Sizewell Marshes
 - 31 South Thames Estuary and Marshes
 - 32 Stour Estuary
 - 33 Thanet Coast
 - 34 The Lagoons
 - 35 The Swale
 - 36 The Wash
 - 37 Upper Colne Marshes
 - 38 Vange & Fobbing Marshes
 - 39 Winterton - Horsey Dunes

Rev	Date	By	Comment
01	07/10/15	BJF	Second issue
0	15/07/15	BJF	First issue

Original A3 Plot Scale 1:1,450,000

© OpenStreetMap (and) contributors, CC-BY-SA
© Crown copyright. All rights reserved. Natural England 2015.
© East Anglia Offshore Wind Limited 2015

East Anglia THREE Limited
SSSIs in Relation to East Anglia THREE Site

Drg No		Figure 13.4
Rev	01	
Date	15/07/15	
Layout	N/A	

Ref. SSSI (Subset)

Chapter 13 Figures End Here