

East Anglia THREE

# Chapter 27

## Traffic and Transport Figures

**Environmental Statement**

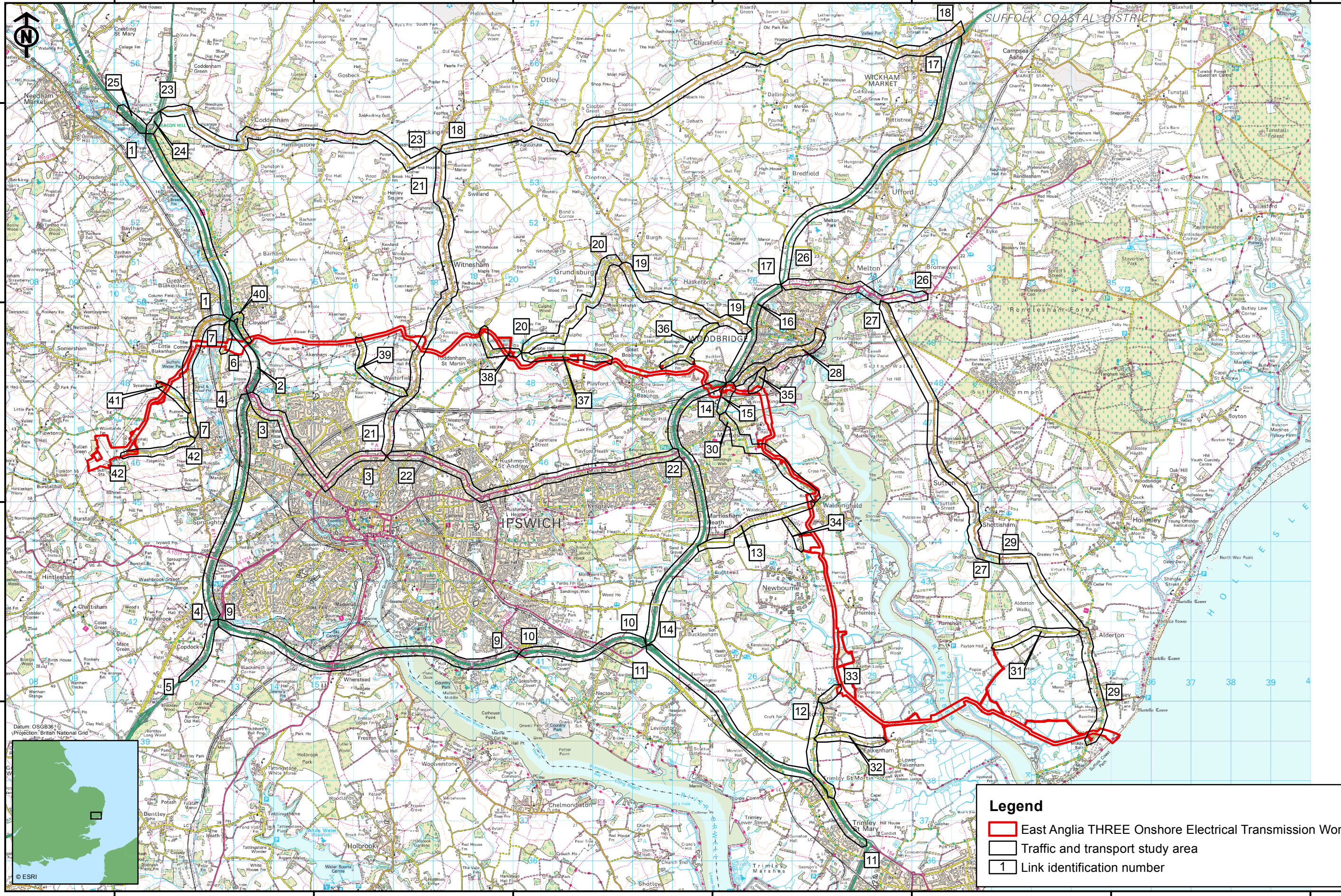
Volume 2

Document Reference – 6.2.27(a)

Author – Royal HaskoningDHV  
East Anglia THREE Limited  
Date – November 2015  
Revision History – Revision A



**This Page is Intentionally Blank**



**Legend**

- East Anglia THREE Onshore Electrical Transmission Works
- Traffic and transport study area
- Link identification number

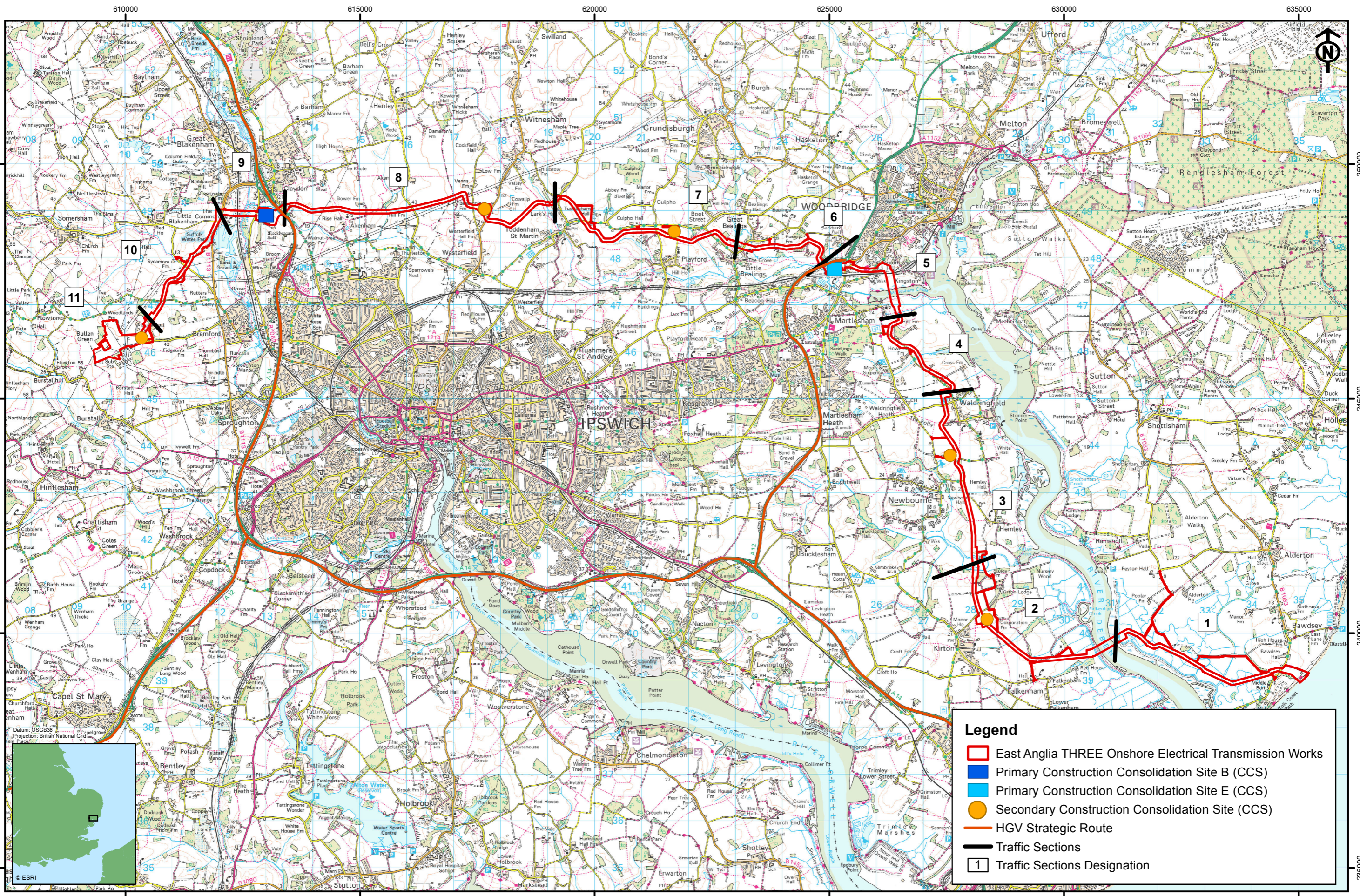



Rev	Date	By	Comment
2	23/10/15	JS	Second issue
1	28/07/15	JE	First issue

Original A3 Plot Scale 1:90,000  
 0 1 2 km  
© Crown Copyright 2015. All rights reserved. Ordnance Survey Licence 0100031673. Traffic data generated by Royal HaskoningDHV

**East Anglia THREE Limited**  
Traffic and Transport study area

Drg No	EAOW3-L-098	Volume
Rev	2	2
Date	23/10/2015	Figure
Layout	N/A	27.1



**Legend**

- East Anglia THREE Onshore Electrical Transmission Works
- Primary Construction Consolidation Site B (CCS)
- Primary Construction Consolidation Site E (CCS)
- Secondary Construction Consolidation Site (CCS)
- HGV Strategic Route
- Traffic Sections
- 1 Traffic Sections Designation



**SCOTTISHPOWER RENEWABLES VATTENFALL**

Rev	Date	By	Comment
2	22/10/15	JS	Second issue
1	28/07/15	JE	First issue

Original A3 Plot Scale 1:75,000

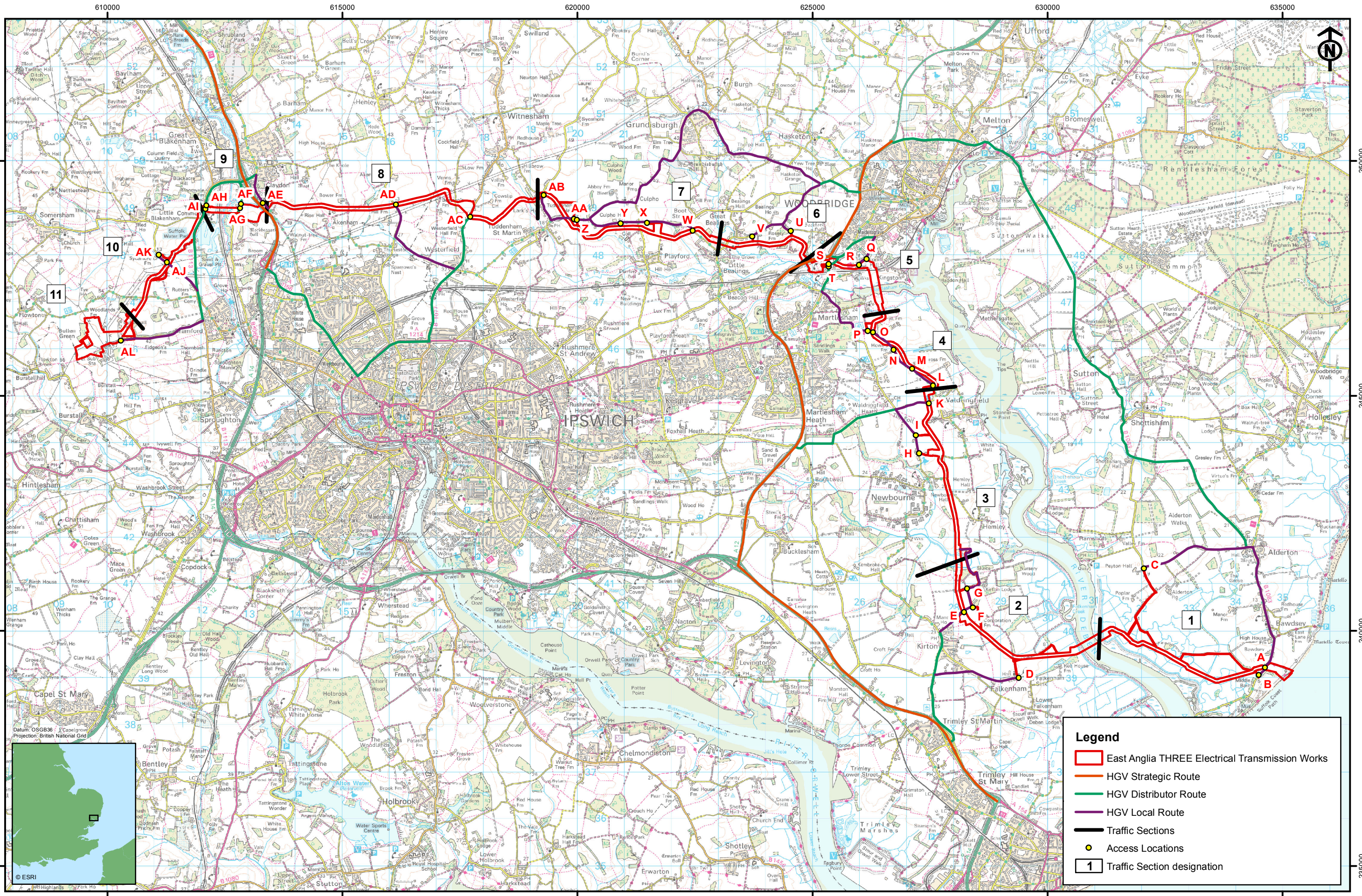
0 1 2 km

© Crown Copyright 2015. All rights reserved. Ordnance Survey Licence 0100031673. Traffic data generated by Royal HaskoningDHV

**East Anglia THREE Limited**

Proposed HGV routes to primary Construction Consolidation Sites

Drg No	EA3-L-099	<b>Volume</b>	<b>2</b>
Rev	2	<b>Figure</b>	<b>27.2</b>
Date	22/10/2015		
Layout	N/A		



Rev	Date	By	Comment
2	06/10/15	JE	Second issue
1	28/07/15	JE	First issue

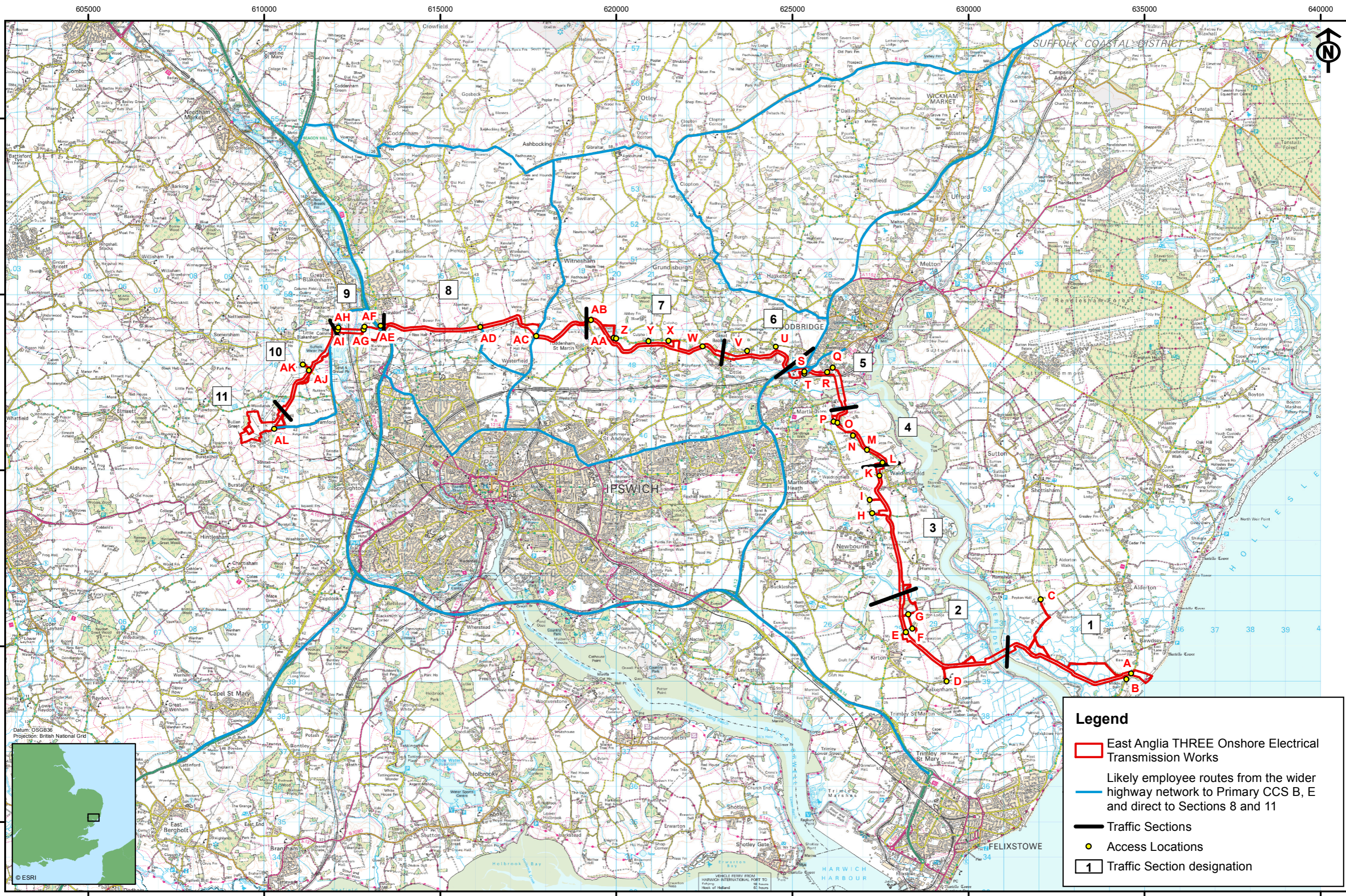
Original A3 Plot Scale 1:75,000

0 1 2 km

© Crown Copyright 2015. All rights reserved. Ordnance Survey Licence 0100031673. Traffic data generated by Royal HaskoningDHV

**East Anglia Offshore Wind**  
Proposed HGV routes to points of access

Drg No	EAOW3-L-109	Volume	2
Rev	2	Figure	27.3
Date	06/10/2015		
Layout	N/A		



**Legend**

- East Anglia THREE Onshore Electrical Transmission Works
- Likely employee routes from the wider highway network to Primary CCS B, E and direct to Sections 8 and 11
- Traffic Sections
- Access Locations
- Traffic Section designation



**SCOTTISHPOWER RENEWABLES VATTENFALL**

Rev	Date	By	Comment
2	22/10/15	JS	Second issue
1	28/07/15	JE	First issue

Original A3 Plot Scale 1:100,000

0 1 2 km

© Crown Copyright 2015. All rights reserved. Ordnance Survey Licence 0100031673. Traffic data generated by Royal HaskoningDHV

**East Anglia THREE Limited**  
Proposed employee routes from wider highway network

Drg No	EA3-L-100	<b>Volume</b>	<b>2</b>
Rev	2	<b>Figure</b>	<b>27.4</b>
Date	22/10/2015		
Layout	N/A		

**Chapter 27 (a) Figures End Here**