

East Anglia THREE

# Chapter 27

## Traffic and Transport Figures

**Environmental Statement**

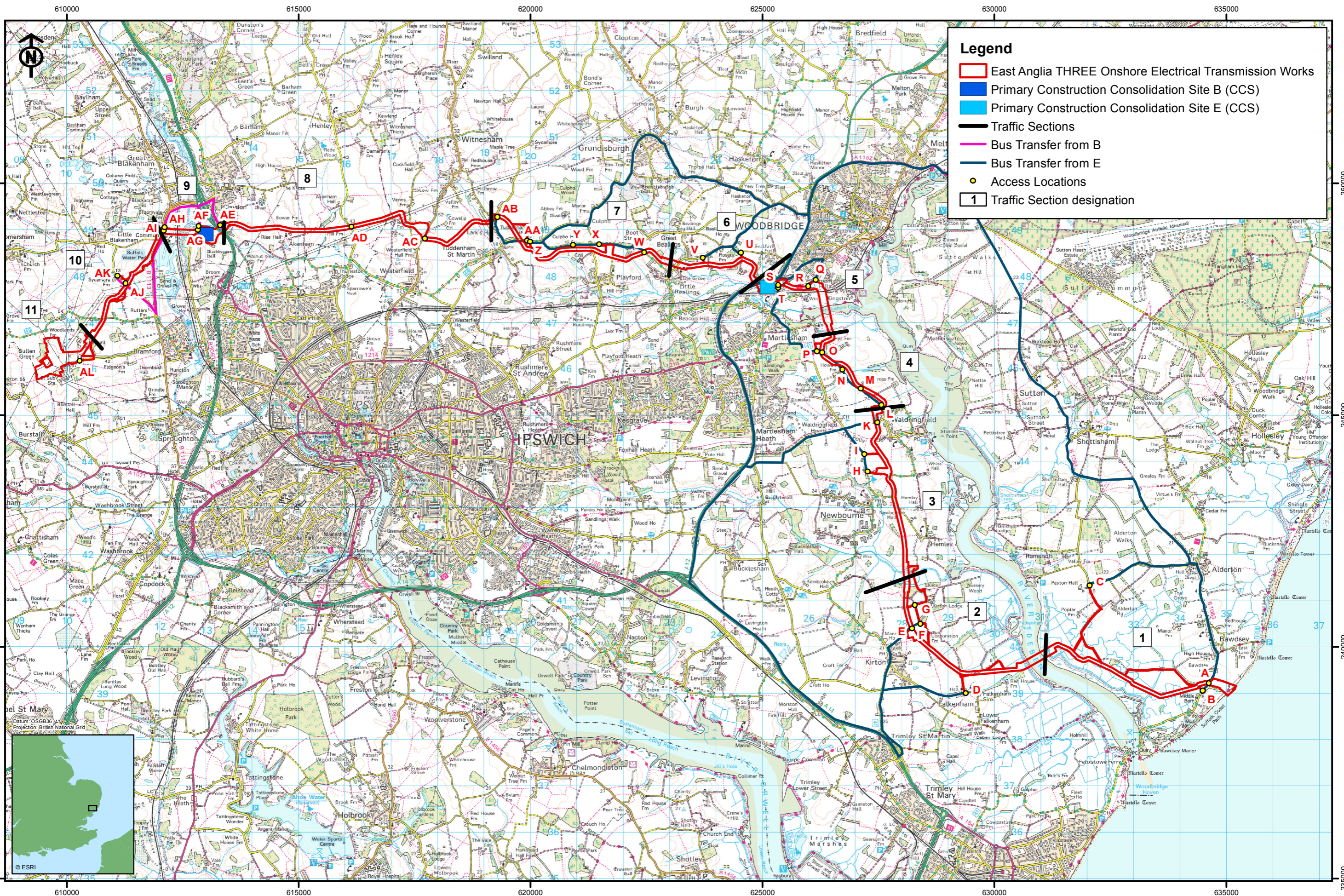
Volume 2

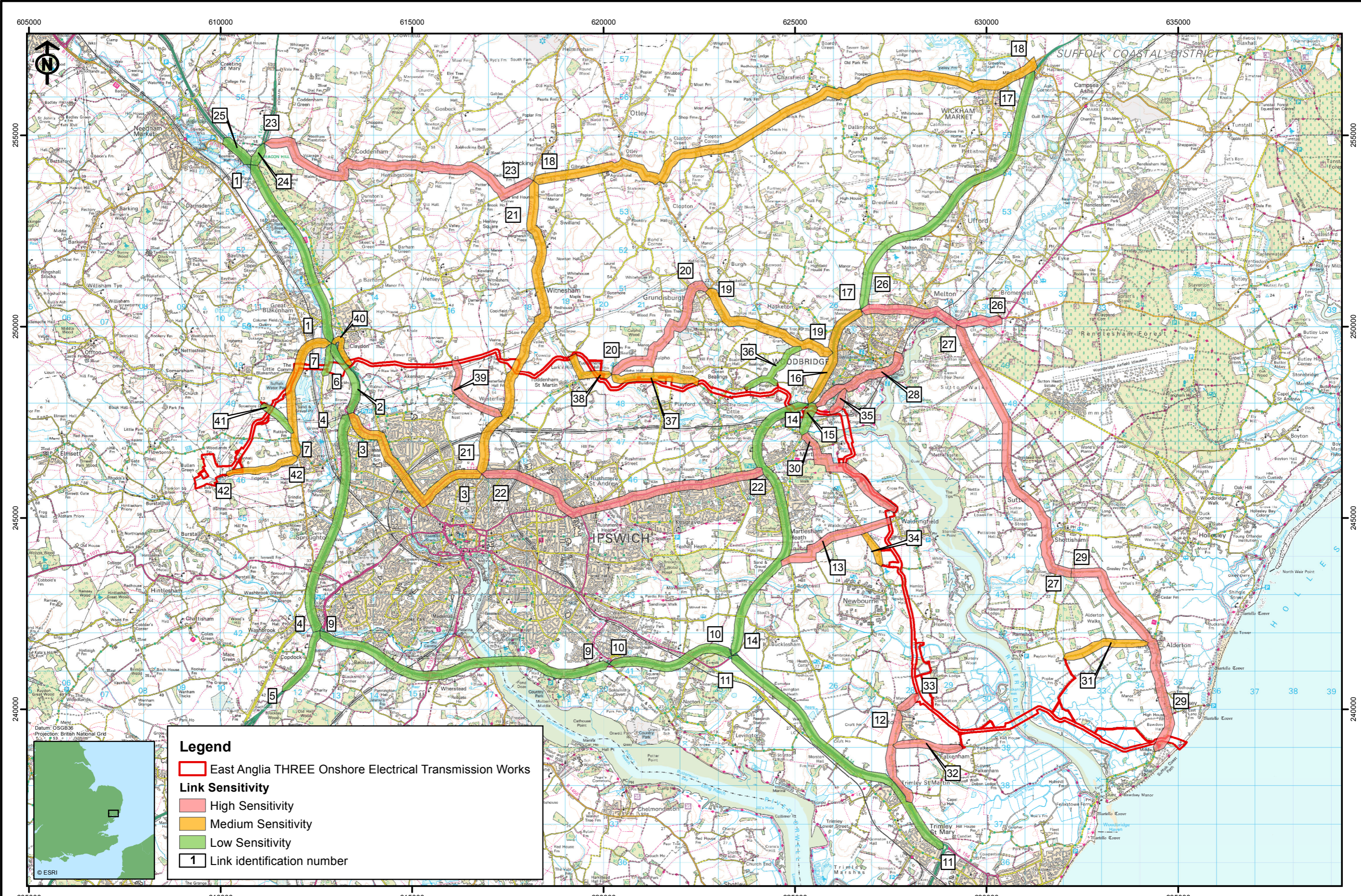
Document Reference – 6.2.27(b)

Author – Royal HaskoningDHV  
East Anglia THREE Limited  
Date – November 2015  
Revision History – Revision A



**This Page is Intentionally Blank**



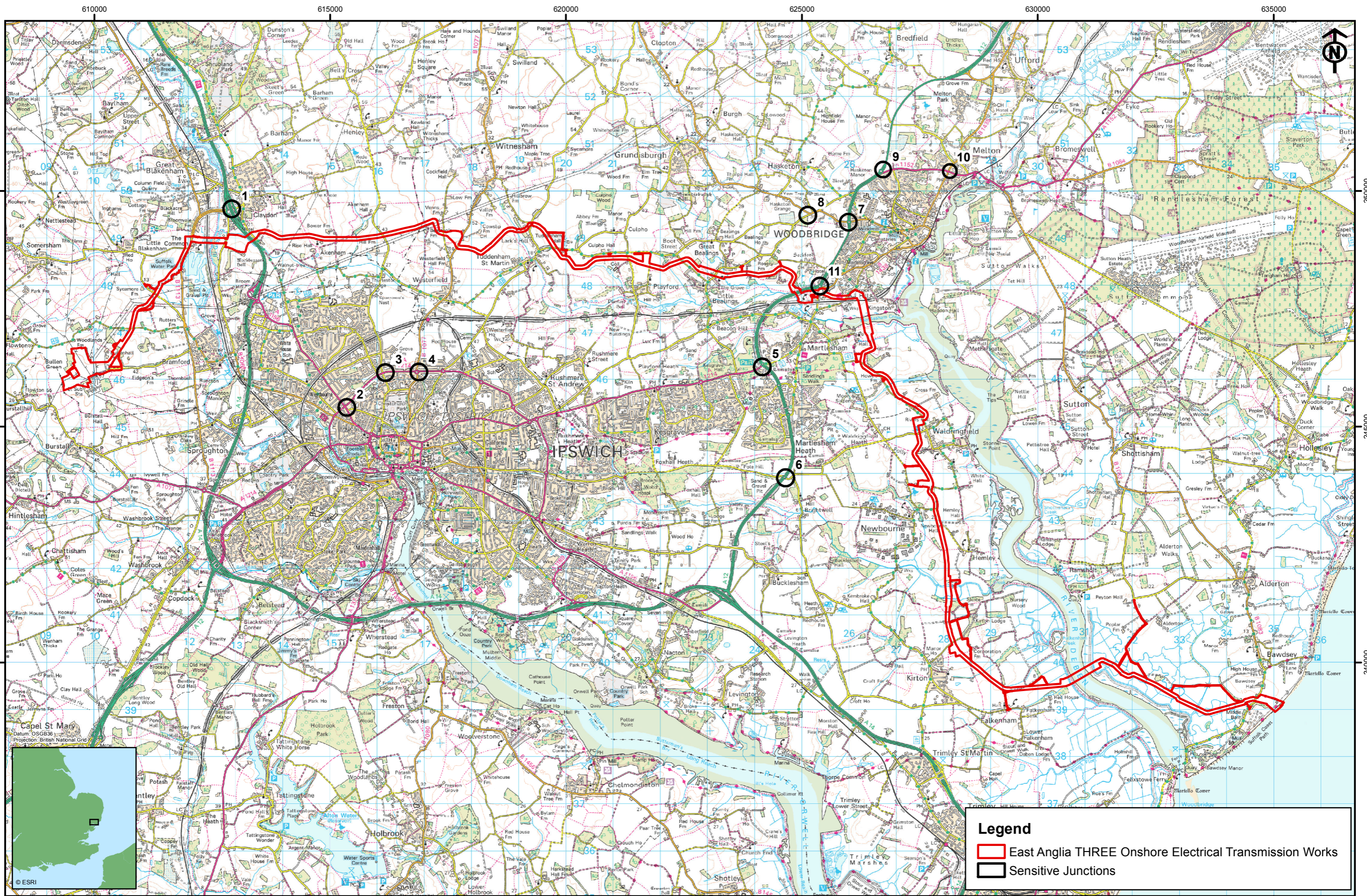


**Legend**

- East Anglia THREE Onshore Electrical Transmission Works
- Link Sensitivity**
- High Sensitivity
- Medium Sensitivity
- Low Sensitivity
- Link identification number

Rev	Date	By	Comment
2	22/10/15	JS	Second issue
1	28/07/15	JE	First issue

Drg No	EA3-L-102	Volume	2
Rev	2	Figure	27.6
Date	22/10/2015		
Layout	N/A		



**Legend**

- East Anglia THREE Onshore Electrical Transmission Works
- Sensitive Junctions

**SCOTTISHPOWER RENEWABLES VATTENFALL**

Rev	Date	By	Comment
2	22/10/15	JS	Second issue
1	28/07/15	JE	First issue

Rev	Date	By	Comment
2	22/10/15	JS	Second issue
1	28/07/15	JE	First issue

Original A3 Plot Scale 1:75,000

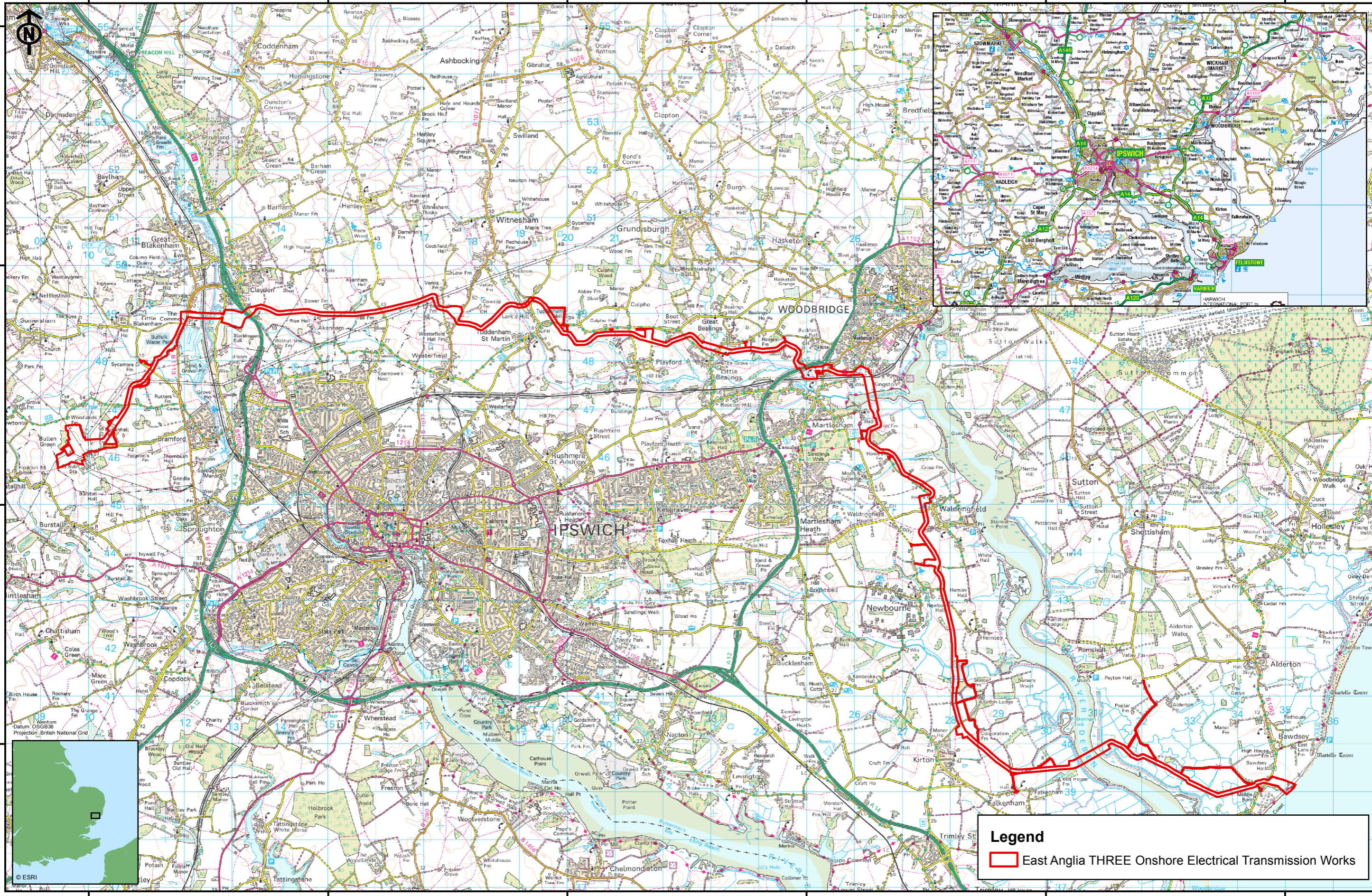
0 1 2 km

© Crown Copyright 2015. All rights reserved. Ordnance Survey Licence 0100031673. Traffic data generated by Royal HaskoningDHV

**East Anglia THREE Limited**

Sensitive junction locations

Drg No	EA3-L-104	Volume	2
Rev	2	Figure	27.7
Date	22/10/2015		
Layout	N/A		



**Legend**

East Anglia THREE Onshore Electrical Transmission Works

**SCOTTISHPOWER RENEWABLES** **VATTENFALL**

Rev	Date	By	Comment
2	22/10/15	JS	Second issue
1	28/07/15	JE	First issue

Rev	Date	By	Comment
2	22/10/15	JS	Second issue
1	28/07/15	JE	First issue

Original A3 Plot Scale 1:75,000

0 1 2 km

© Crown Copyright 2015. All rights reserved. Ordnance Survey Licence 0100031673.

**East Anglia THREE Limited**

Existing highway network

Drg No	EA3-L-105	<b>Volume</b>	<b>2</b>
Rev	2	<b>Figure</b>	<b>27.8</b>
Date	22/10/2015		
Layout	N/A		

**Chapter 27(b) Figures End Here**