

East Anglia THREE

# Chapter 28

Socio-economics, Tourism and  
Recreation Figures

**Environmental Statement**

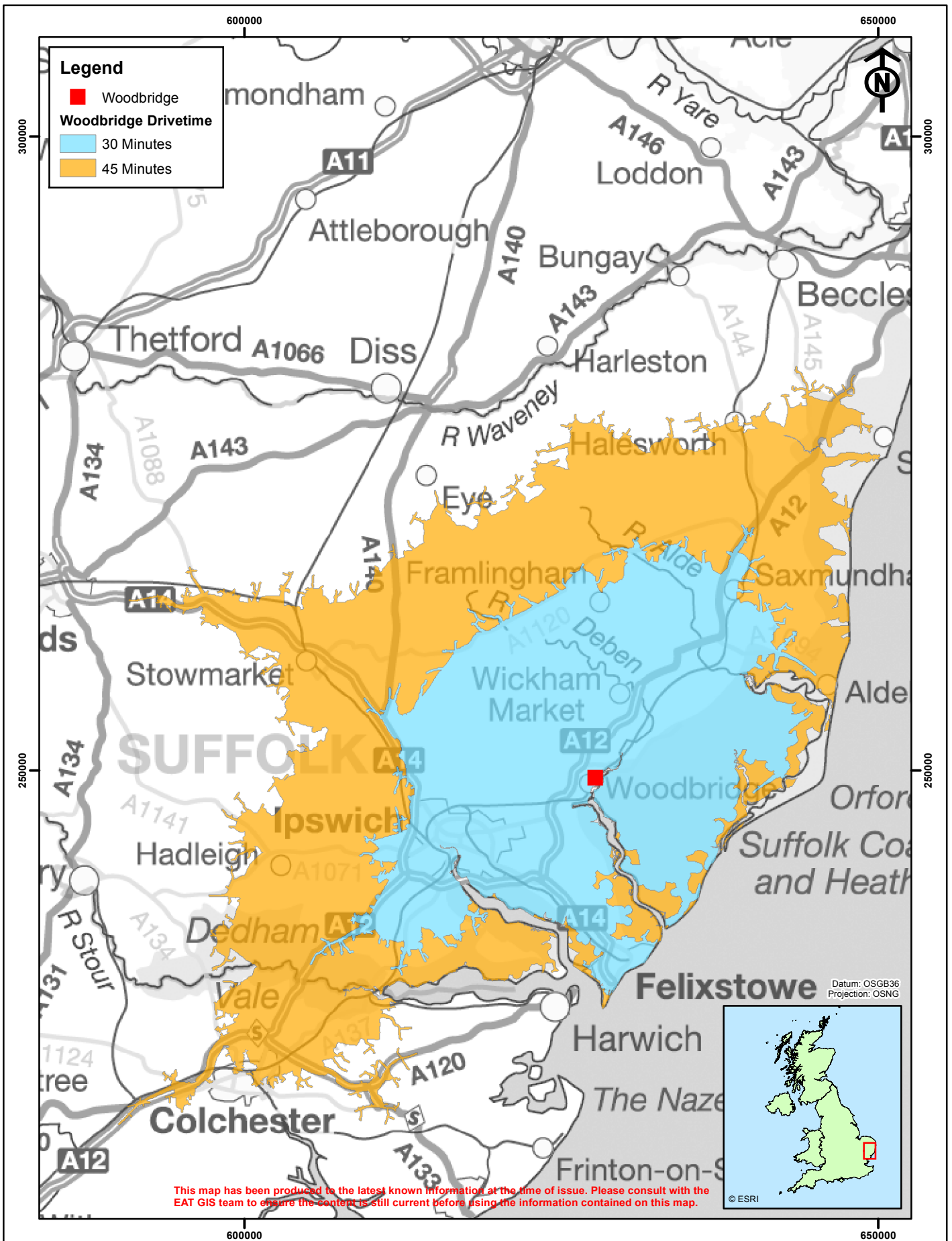
Volume 2

Document Reference – 6.2.28

Author – Royal HaskoningDHV  
East Anglia THREE Limited  
Date – November 2015  
Revision History – Revision A

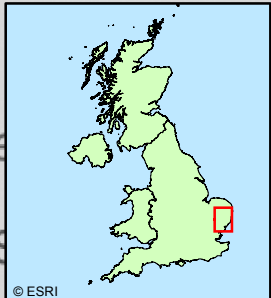


**This Page is Intentionally Blank**



This map has been produced to the latest known information at the time of issue. Please consult with the EAT GIS team to ensure the content is still current before using the information contained on this map.

Datum: OSGB36  
Projection: OSNG

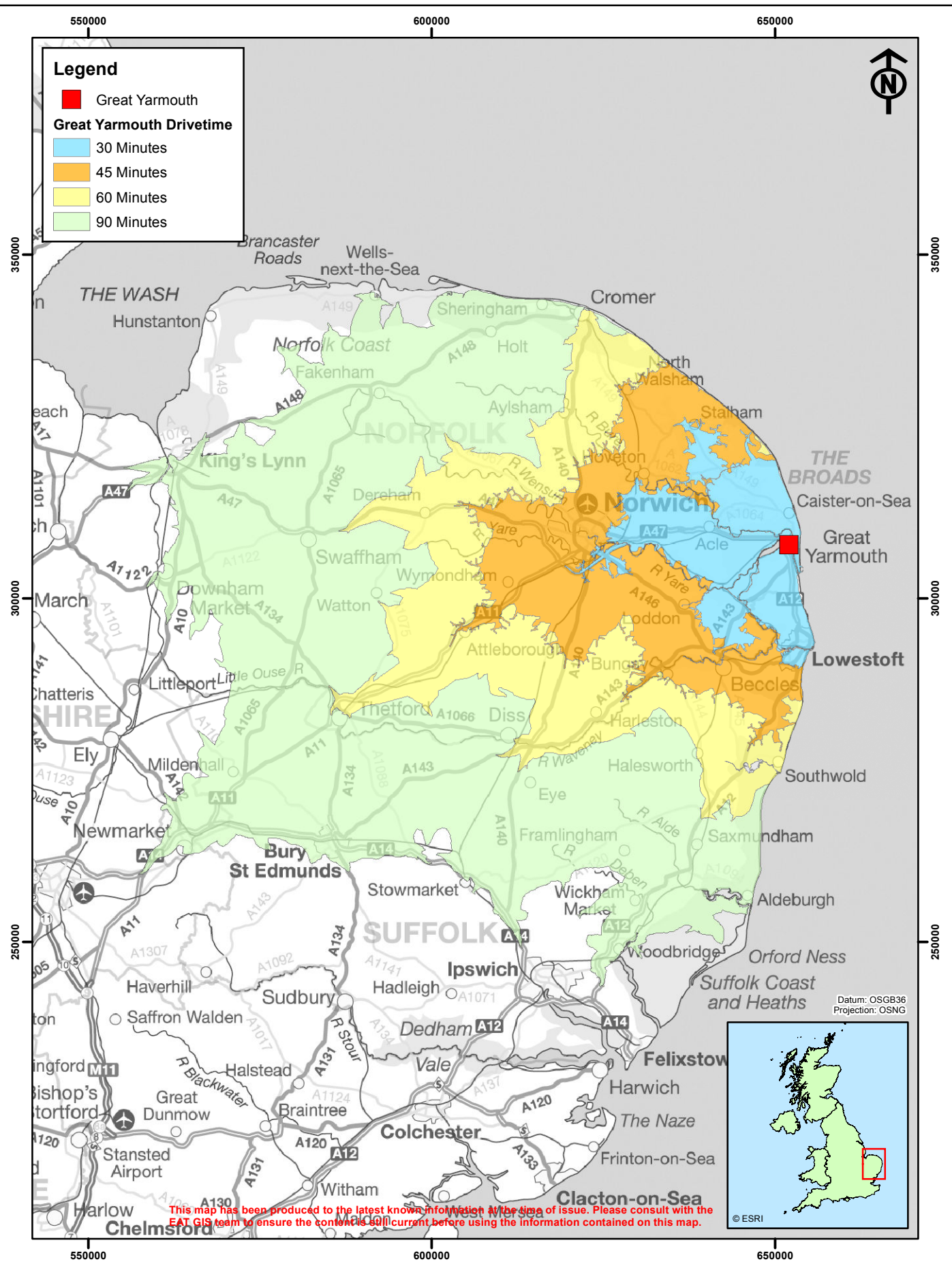


				Contains Ordnance Survey data © Crown Copyright and database right 2015. © East Anglia THREE Limited 2015		<b>East Anglia THREE Limited</b> Woodbridge 30, 45 Minute Drivetimes										
D	16/10/15	CM	Fourth Issue, text updates.			Original A4 Plot Scale 0 5 10 km 1:400,000										
C	07/07/15	DRL	Third Issue, isochrone update.			<table border="1"> <tr> <td>Layout</td> <td>Date</td> <td>Rev</td> <td>Dwg No.</td> <td rowspan="2">Figure 28.1</td> </tr> <tr> <td>LEAxx00x</td> <td>16/10/2015</td> <td>D</td> <td>6115-680-PP-007-C</td> </tr> </table>		Layout	Date	Rev	Dwg No.	Figure 28.1	LEAxx00x	16/10/2015	D	6115-680-PP-007-C
Layout	Date	Rev	Dwg No.	Figure 28.1												
LEAxx00x	16/10/2015	D	6115-680-PP-007-C													
B	07/05/14	CM	Second Issue, Figure number changed.													
Rev	Date	By	Comment													

Ref: Z5\_Zone\_v03\_100914rs, Z5\_Project\_v10\_100914rs, EAOW1\_CabCoAot\_v06\_1108111m\_UTM31N, EAOW1\_CabCo\_v06\_110626rs\_UTM31N

**Legend**

- Great Yarmouth
- Great Yarmouth Drivetime**
- 30 Minutes
- 45 Minutes
- 60 Minutes
- 90 Minutes



**VATTENFALL**

**SCOTTISHPOWER RENEWABLES**

Contains Ordnance Survey data © Crown Copyright and database right 2015.  
© East Anglia THREE Limited 2015

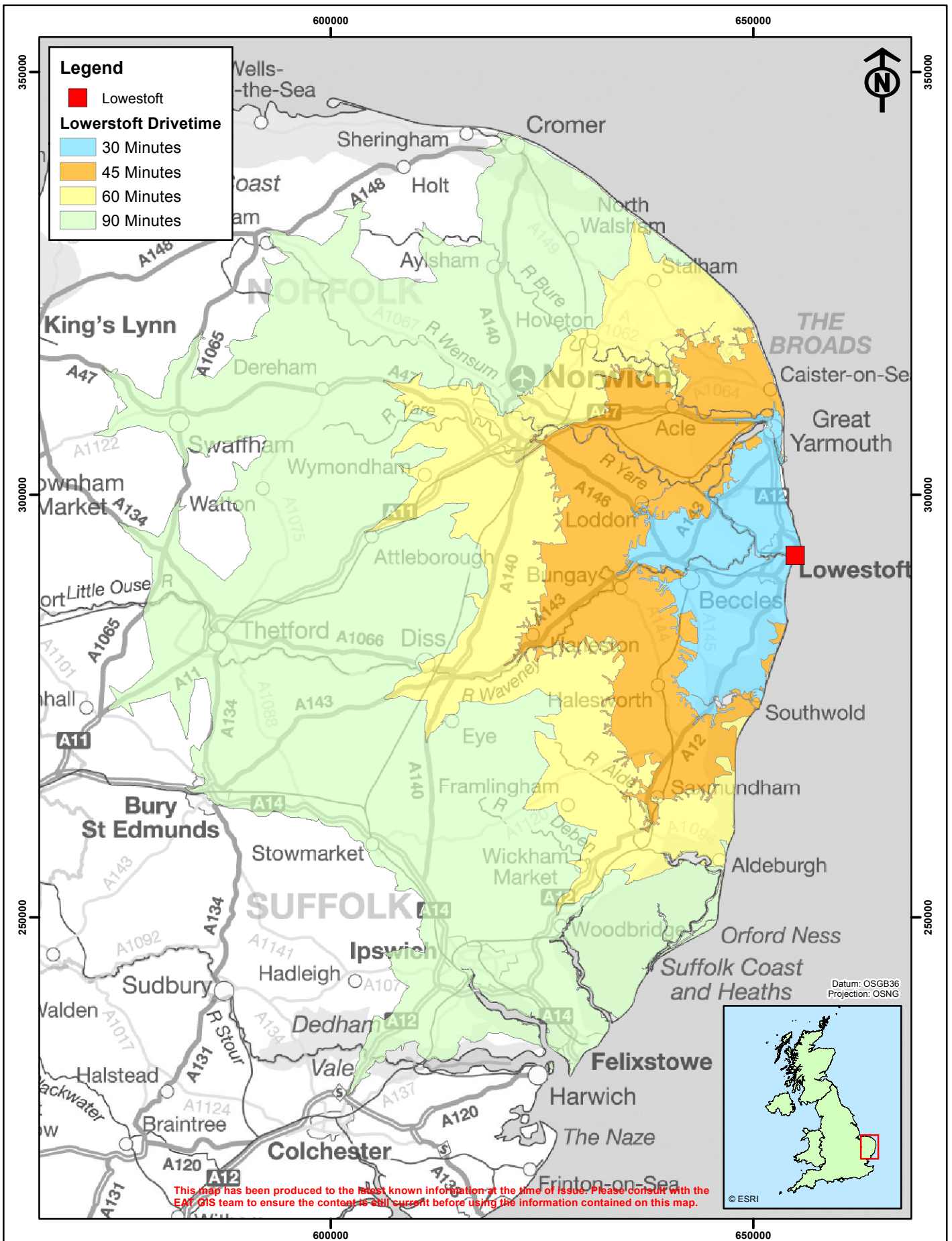
**East Anglia THREE Limited**  
Great Yarmouth  
30, 45, 60 and 90 Minute Drivetimes

D	16/10/15	CM	Fourth Issue, text updates.
C	07/07/15	DRL	Third Issue, isochrone update.
B	07/05/14	CM	Second Issue, Figure number changed.
Rev	Date	By	Comment

Original A4 Plot Scale 0 5 10 15 20 km  
1:750,000

Layout	Date	Rev	Dwg No.	<b>Figure 28.2</b>
LEAxx00x	16/10/2015	D	6115-680-PP-007-C	

Ref: Z5\_Zone\_v03\_100914rs\_Z5\_Project\_v10\_100914rs\_EAOW1\_CabCoAol\_v06\_1108111m\_UTM31N\_EAOW1\_CabCo\_v06\_110626rs\_UTM31N



**VATTENFALL** 

 **SCOTTISHPOWER RENEWABLES**

Contains Ordnance Survey data © Crown Copyright and database right 2015.  
© East Anglia THREE Limited 2015

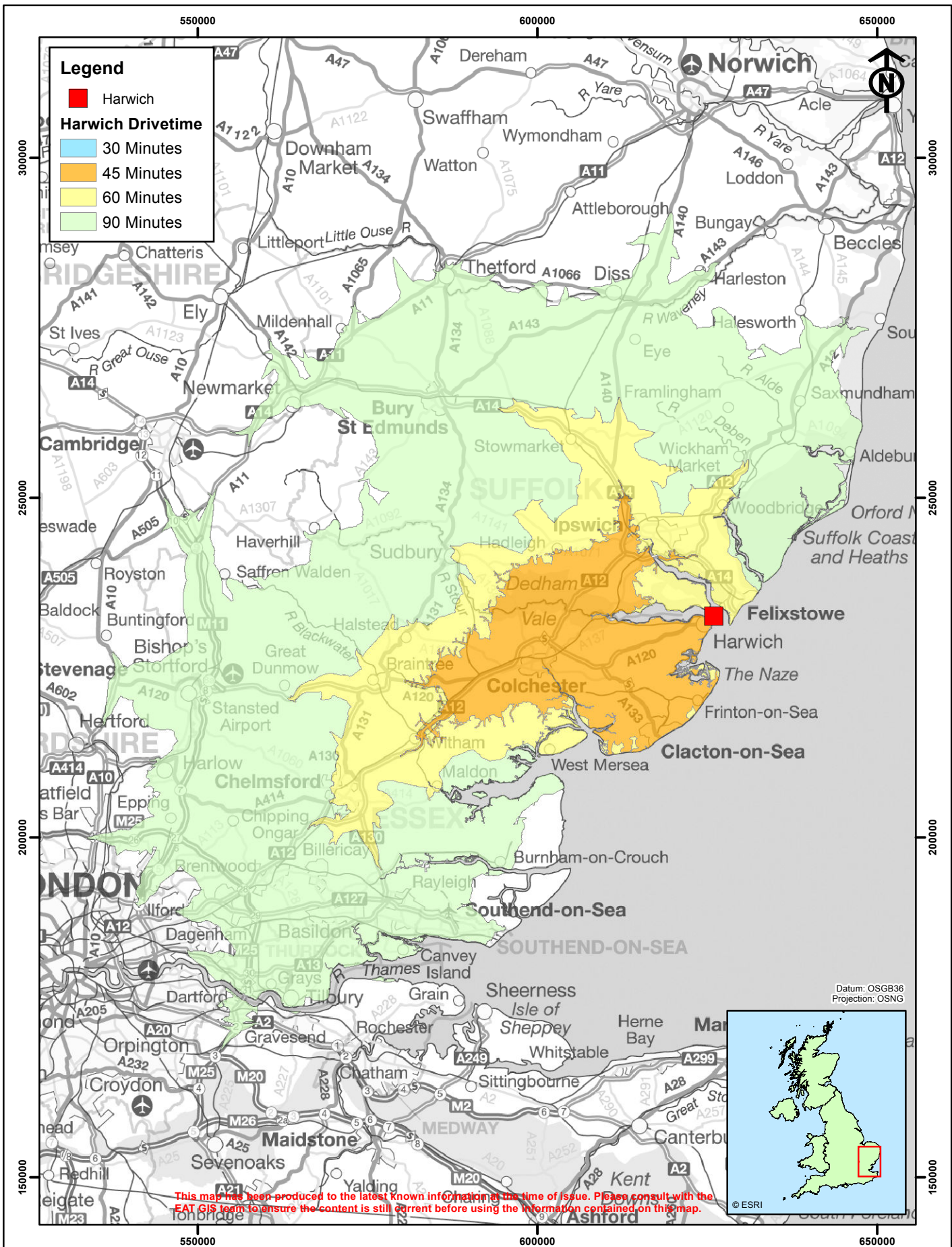
**East Anglia THREE Limited**  
**Lowestoft**  
**30, 45, 60 and 90 Minute Drivetimes**

D	16/10/15	CM	Fourth Issue, text updates.
C	07/07/15	DRL	Third Issue, isochrone update.
B	07/05/14	CM	Second Issue, Figure number changed.
Rev	Date	By	Comment

Original A4 Plot Scale 0 5 10 15 20 km  
1:600,000

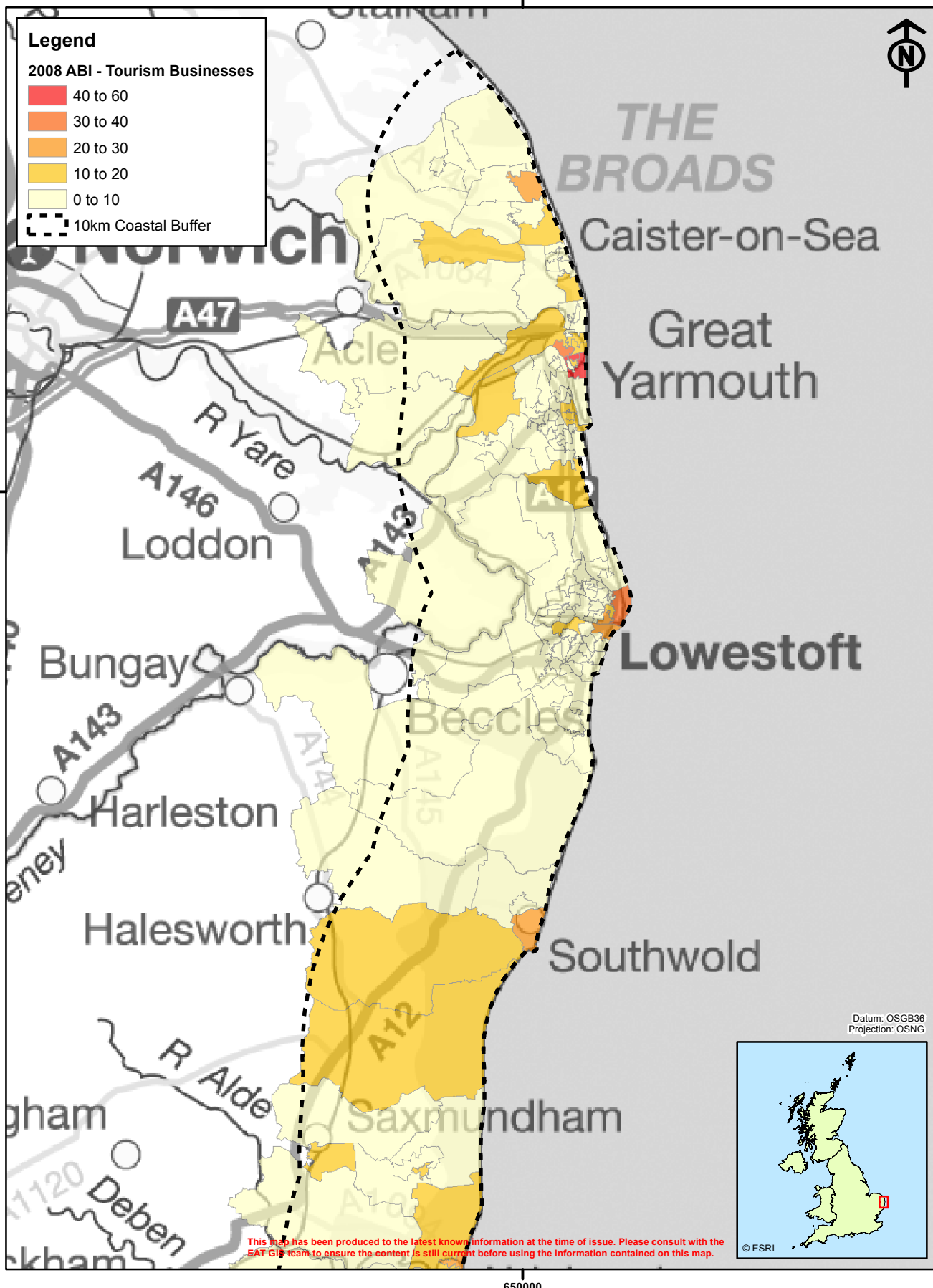
Layout	Date	Rev	Dwg No.	Figure 28.3
LEAxx00x	16/10/2015	D	6115-680-PP-007-C	

Ref: Z5\_Zone\_v03\_100914rs, Z5\_Project\_v10\_100914rs, EAOW1\_CabCoAol\_v06\_1108111m\_UTM31N, EAOW1\_CabCo\_v06\_110626rs\_UTM31N



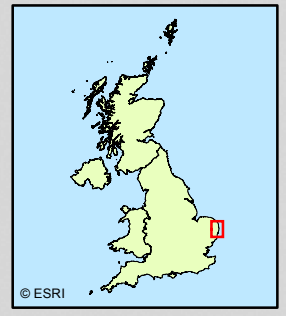
				Contains Ordnance Survey data © Crown Copyright and database right 2015. © East Anglia THREE Limited 2015		<b>East Anglia THREE Limited</b> <b>Harwich</b> <b>30, 45, 60 and 90 Minute Drivetimes</b>											
D	16/10/15	CM	Fourth Issue, text updates.			Original A4 Plot Scale 0 5 10 15 20 km 1:750,000											
C	07/07/15	DRL	Third Issue, isochrone update.			<table border="1"> <tr> <th>Layout</th> <th>Date</th> <th>Rev</th> <th>Dwg No.</th> <th>Figure 28.4</th> </tr> <tr> <td>LEAxx00x</td> <td>16/10/2015</td> <td>D</td> <td>6115-680-PP-007-C</td> <td></td> </tr> </table>		Layout	Date	Rev	Dwg No.	Figure 28.4	LEAxx00x	16/10/2015	D	6115-680-PP-007-C	
Layout	Date	Rev	Dwg No.	Figure 28.4													
LEAxx00x	16/10/2015	D	6115-680-PP-007-C														
B	07/05/14	CM	Second Issue, Figure number changed.														
Rev	Date	By	Comment														

Ref: Z5\_Zone\_v03\_100914rs\_Z5\_Project\_v10\_100914rs\_EAOW1\_CabCoAot\_v06\_1108111m\_UTM31N\_EAOW1\_CabCo\_v06\_110826rs\_UTM31N



This map has been produced to the latest known information at the time of issue. Please consult with the EAT GIS team to ensure the content is still current before using the information contained on this map.

Datum: OSGB36  
Projection: OSNG



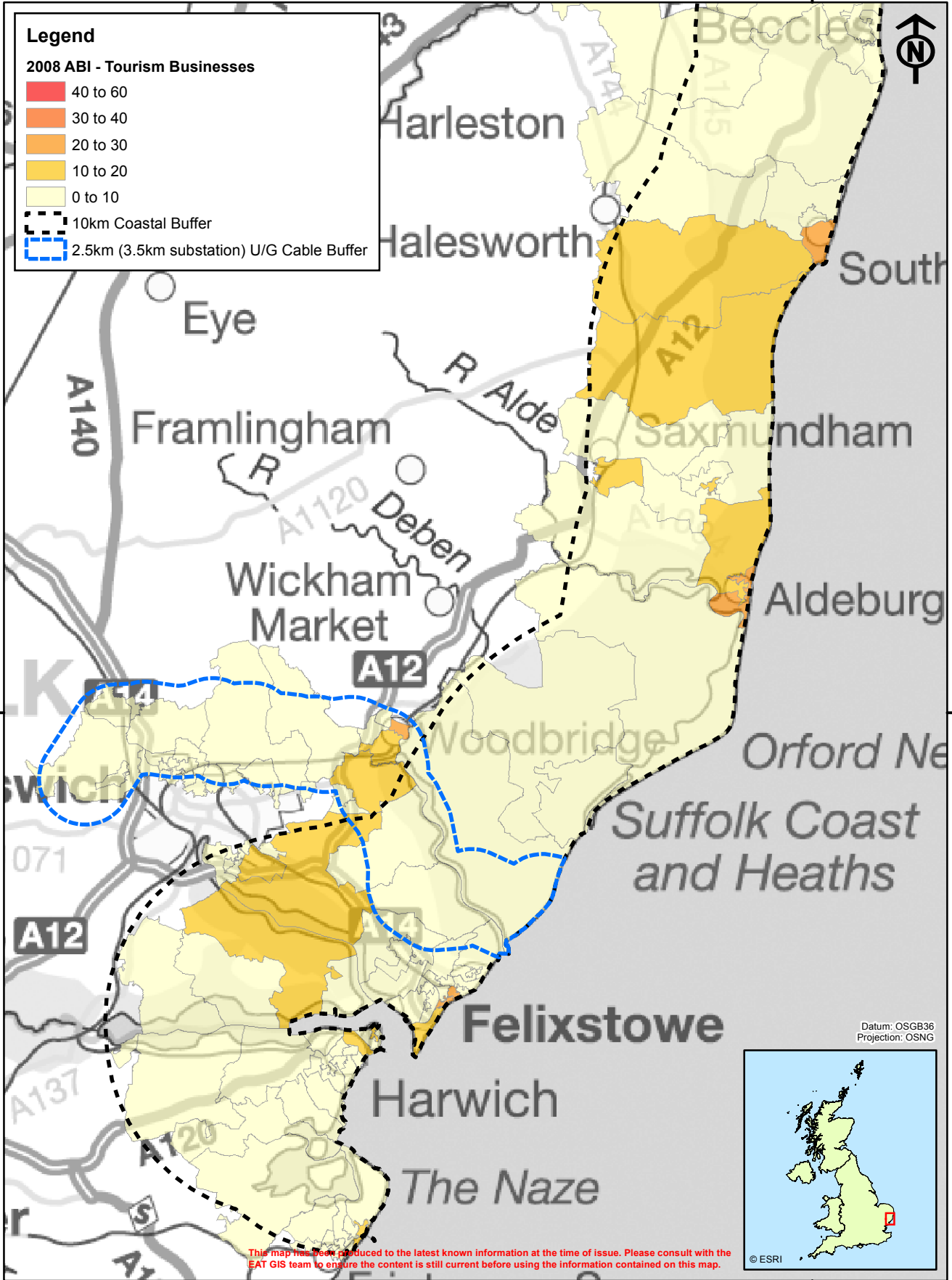
Contains Ordnance Survey data © Crown Copyright and database right 2015.  
© East Anglia THREE Limited 2015.

**East Anglia THREE Limited**  
Tourism Business Density  
North

Rev	Date	By	Comment
C	16/10/15	CM	Third Issue, text amends.
B	07/05/14	CM	Second Issue, figure number change, cable update.
A	14/04/14	CM	First Issue.

Original A4 Plot Scale	0	2	4 km	0	1	2	3 nm
1:300,000							
Layout	Date	Rev	Dwg No.	Figure 28.5			
LEAx00x	16/10/15	C	6115-680-PP-004-C				

Ref: Z5\_Zone\_v03\_100914rs, Z5\_Project\_v10\_100914rs, EAOW1\_CabCoAol\_v06\_110811m\_UTM31N, EAOW1\_CabCo\_v06\_110626rs\_UTM31N



**Legend**

**2008 ABI - Tourism Businesses**

- 40 to 60
- 30 to 40
- 20 to 30
- 10 to 20
- 0 to 10

- 10km Coastal Buffer
- 2.5km (3.5km substation) U/G Cable Buffer

This map has been produced to the latest known information at the time of issue. Please consult with the EAT GIS team to ensure the content is still current before using the information contained on this map.

Datum: OSGB36  
Projection: OSNG

© ESRI

**VATTENFALL**

**SCOTTISHPOWER RENEWABLES**

Contains Ordnance Survey data © Crown Copyright and database right 2015.  
© East Anglia THREE Limited 2015.

**East Anglia THREE Limited**  
Tourism Business Density  
South

C	16/10/15	CM	Third Issue, text amends.
B	07/05/14	CM	Second Issue, figure number change, cable update.
A	14/04/14	CM	First Issue.
Rev	Date	By	Comment

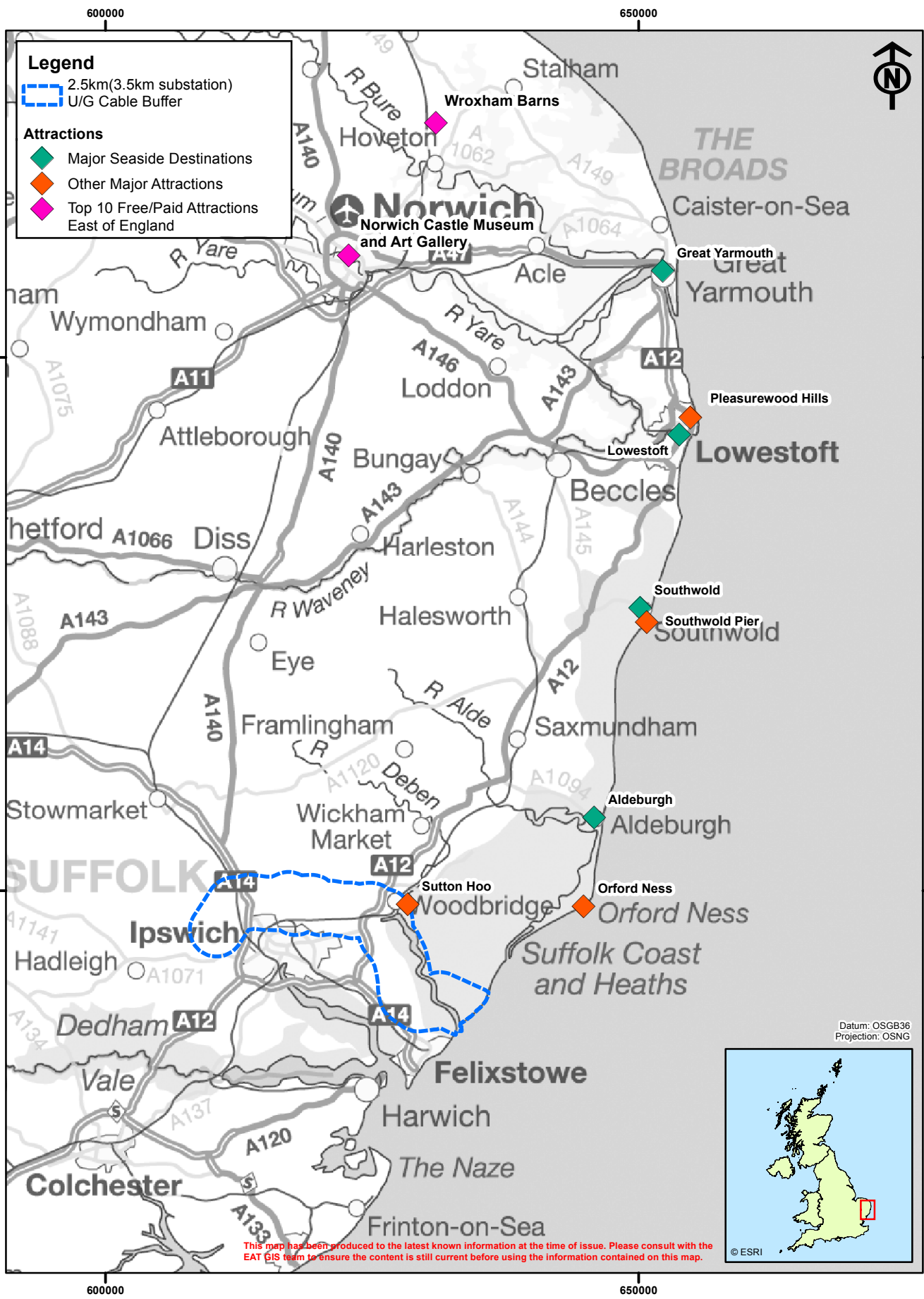
Original A4 Plot Scale 1:300,000

0 2 4 km 0 1 2 3 nm

Layout	Date	Rev	Dwg No.	Figure 28.6
LEAx00x	16/10/15	C	6115-680-PP-005-C	

Ref: Z5\_Zone\_v03\_100914rs, Z5\_Project\_v10\_100914rs, EAOW1\_CabCoAol\_v06\_1108111m\_UTM31N, EAOW1\_CabCo\_v06\_110626rs\_UTM31N





**Legend**

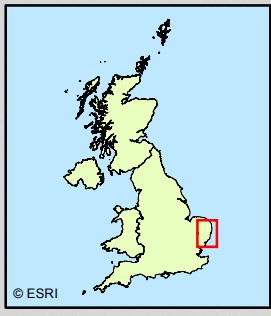
- 2.5km(3.5km substation) U/G Cable Buffer

**Attractions**

- Major Seaside Destinations
- Other Major Attractions
- Top 10 Free/Paid Attractions East of England



Datum: OSGB36  
Projection: OSNG



This map has been produced to the latest known information at the time of issue. Please consult with the EAT GIS team to ensure the content is still current before using the information contained on this map.

**VATTENFALL**

**SCOTTISHPOWER RENEWABLES**

Contains Ordnance Survey data © Crown Copyright and database right 2015.  
Sources:  
Visit England, www.pleasurewoodhills.com, www.southwoldpier.co.uk, www.nationaltrust.org.uk/orford-ness, http://www.nationaltrust.org.uk/sutton-hoo, © East Anglia THREE Limited 2015.

**East Anglia THREE Limited**

**Attractions**

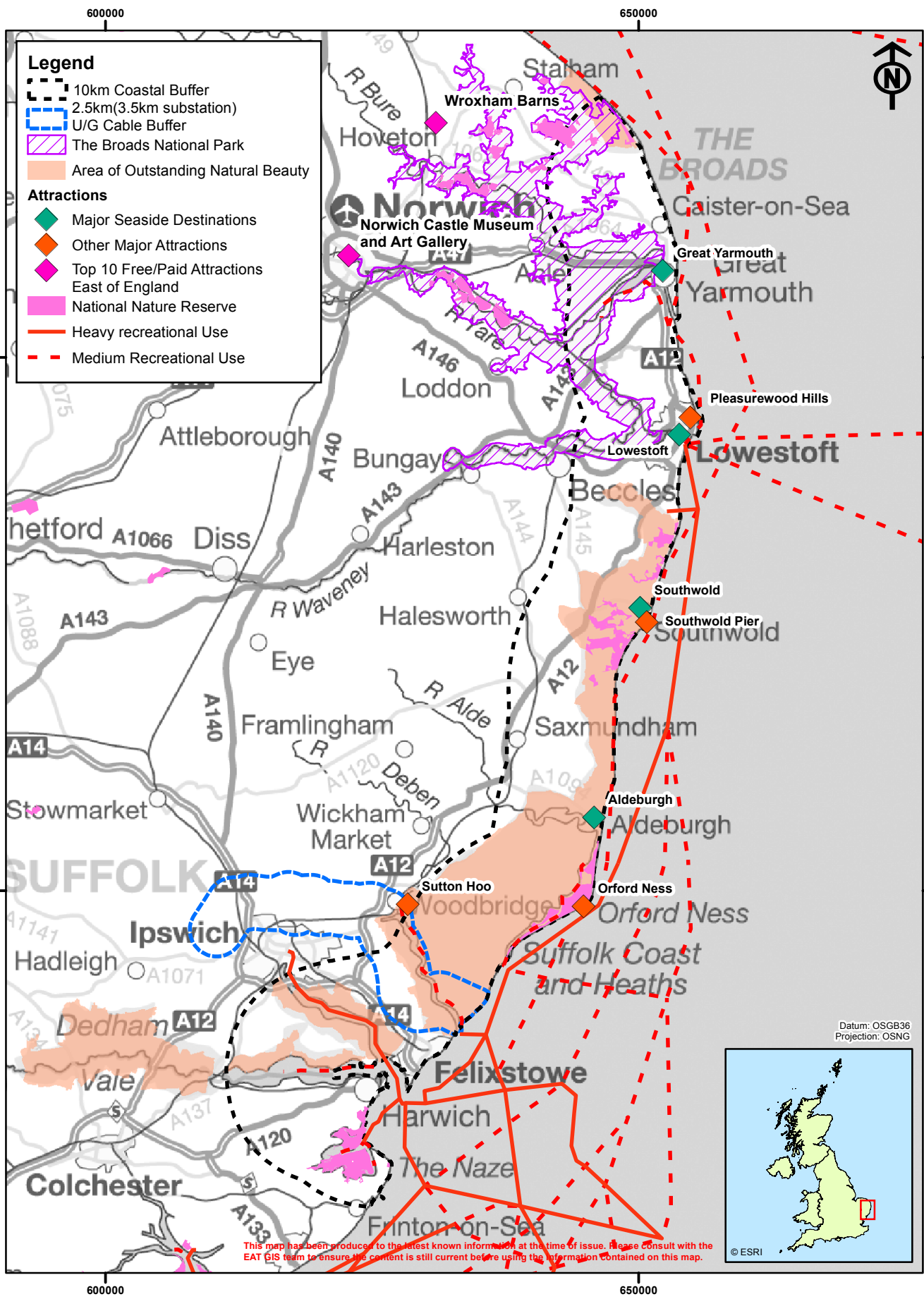
C	00/00/00	AA	Third Issue, inc. summary of changes
B	16/10/15	CM	Second Issue, edit receptors, text amends
A	14/04/14	CM	First Issue.
Rev	Date	By	Comment

Original A4 Plot Scale 1:500,000

0 2 4 km      0 1 2 3 nm

Layout	Date	Rev	Dwg No.	Figure 28.7
LEAxx00x	16/10/15	B	6115-680-PP-006-B	

Ref: Z5\_Zone\_v03\_100914rs, Z5\_Project\_v10\_100914rs, EAOW1\_CabCoAol\_v06\_1108111m\_UTM31N, EAOW1\_CabCo\_v06\_110826rs\_UTM31N



**Legend**

- 10km Coastal Buffer
- 2.5km(3.5km substation) U/G Cable Buffer
- The Broads National Park
- Area of Outstanding Natural Beauty

**Attractions**

- Major Seaside Destinations
- Other Major Attractions
- Top 10 Free/Paid Attractions East of England
- National Nature Reserve
- Heavy recreational Use
- Medium Recreational Use

This map has been produced to the latest known information at the time of issue. Please consult with the EAT GIS team to ensure the content is still current before using the information contained on this map.

Datum: OSGB36  
Projection: OSNG

© ESRI

**VATTENFALL**

**SCOTTISHPOWER RENEWABLES**

Contains Ordnance Survey data © Crown Copyright and database right 2015.  
Sources:  
Visit England, www.pleasurewoodhills.com, www.southwoldpier.co.uk, www.nationaltrust.org.uk/orford-ness, http://www.nationaltrust.org.uk/sutton-hoo, Royal Yachting Association 2015.  
© East Anglia THREE Limited 2015.

**East Anglia THREE Limited**  
Recreational Use and Sailing Routes

Rev	Date	By	Comment
C	00/00/00	AA	Third Issue, inc. summary of changes
B	16/10/15	CM	Second Issue, edit receptors, text amends
A	14/04/14	CM	First Issue.

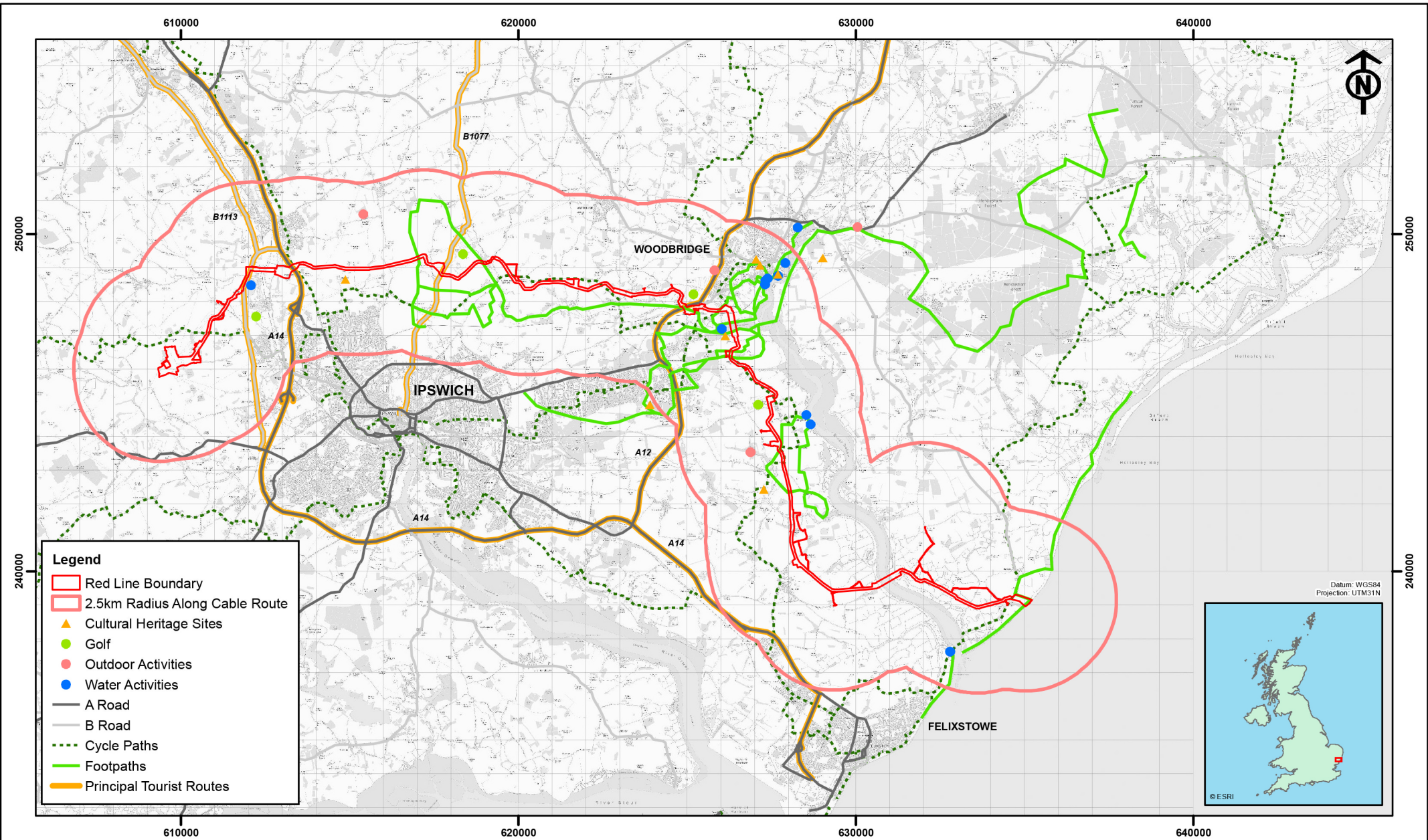
Original A4 Plot Scale 1:500,000

0 2 4 km      0 1 2 3 nm

Layout	Date	Rev	Dwg No.
LEAxx00x	16/10/15	B	6115-680-PP-007-B

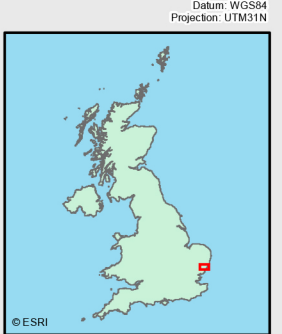
**Figure 28.8**

Ref: Z5\_Zone\_v03\_100914rs, Z5\_Project\_v10\_100914rs, EAOW1\_CabCoAol\_v06\_110811lm\_UTM31N, EAOW1\_CabCo\_v06\_110626rs\_UTM31N



**Legend**

- Red Line Boundary
- 2.5km Radius Along Cable Route
- ▲ Cultural Heritage Sites
- Golf
- Outdoor Activities
- Water Activities
- A Road
- B Road
- Cycle Paths
- Footpaths
- Principal Tourist Routes



Rev	Date	By	Comment
B	16/10/15	CM	Second Issue, text amends
A	07/05/14	CM	First Issue

Original A4 Plot Scale 1:150,000

Contains Ordnance Survey data © Crown Copyright and database right 2015.  
Royal Yachting Association 2015.  
© East Anglia THREE Limited 2015.

**East Anglia THREE Limited**  
Onshore Tourism and Recreation Routes and Receptors

Drg No	6115-680-PP-007-B
Rev	B
Date	16/10/15
Figure	Figure 28.9

**Chapter 28 Figures End Here**