

East Anglia THREE

Chapter 29

Landscape, Seascape and Visual Amenity

Environmental Statement

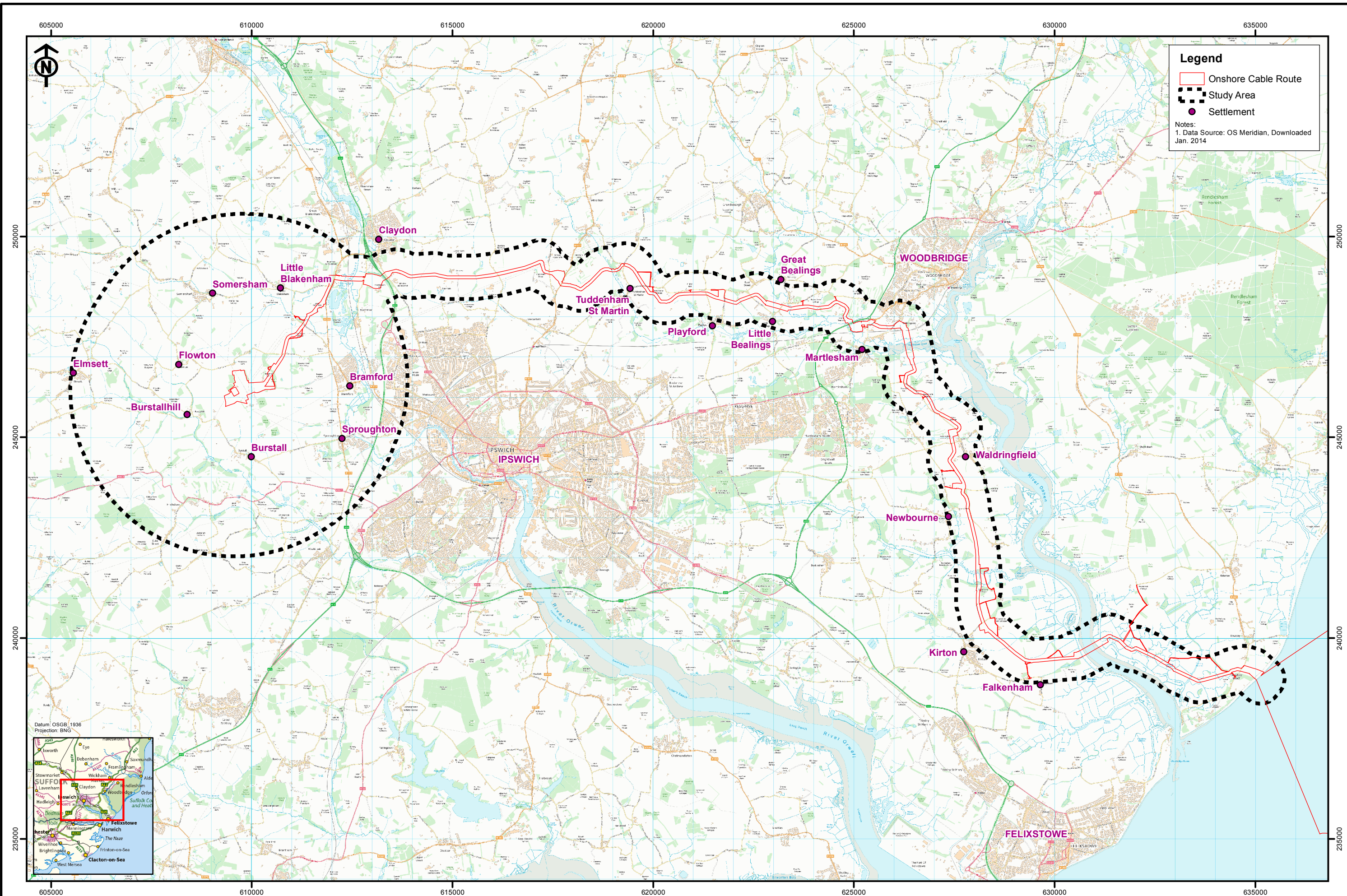
Volume 2

Document Reference – 6.2.29(a)

Author – Open
East Anglia THREE Limited
Date – November 2015
Revision History – Revision A



This Page is Intentionally Blank



Legend

- Onshore Cable Route
- - - Study Area
- Settlement

Notes:
1. Data Source: OS Meridian, Downloaded Jan. 2014



Rev	Date	By	Comment
4	30/10/15	LA	Final Issue
3	27/07/15	LA	Final Draft
2	15/05/14	TR	Boundary Revision

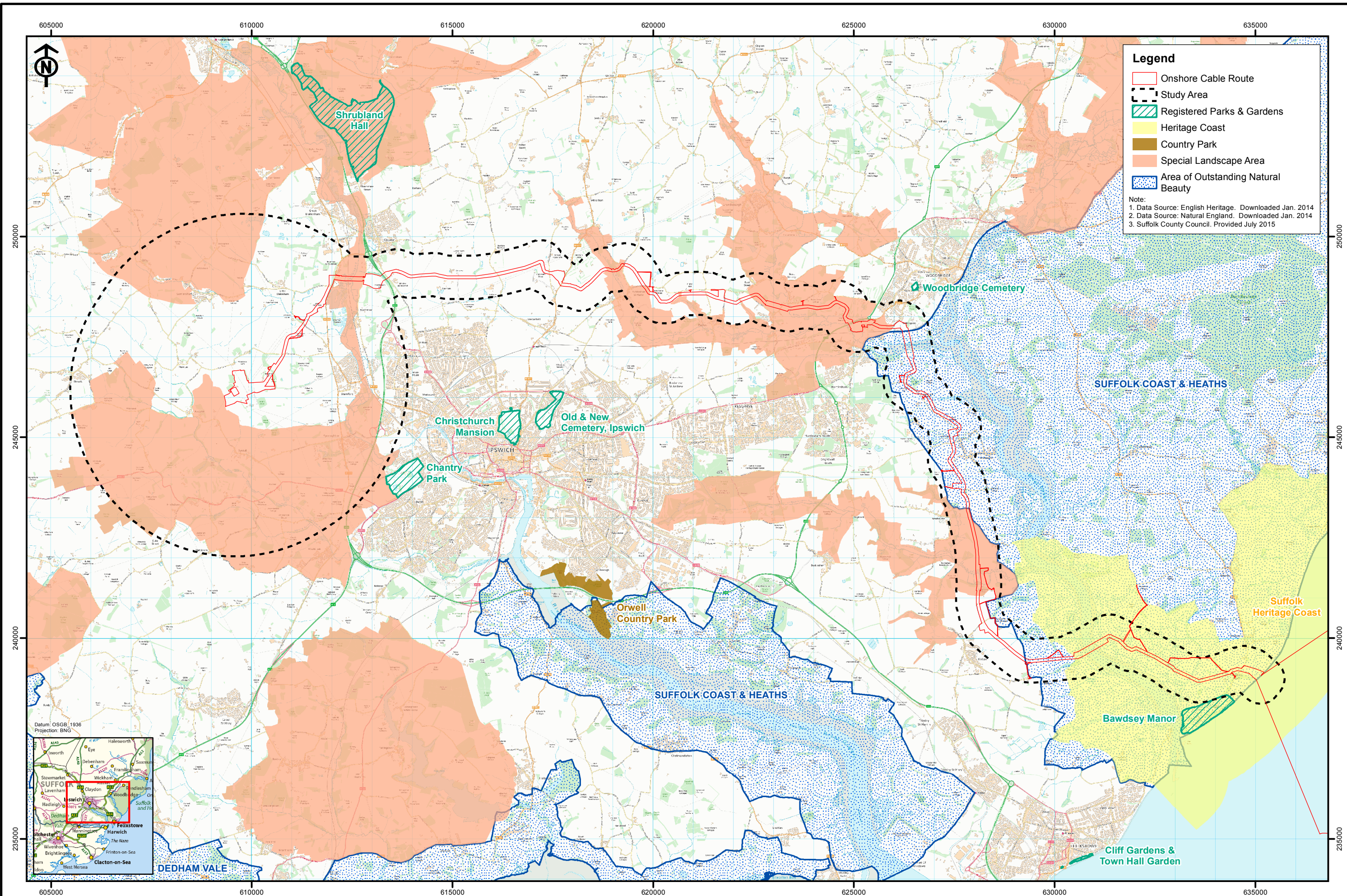
Original A3 Plot Scale 1:85,000

© Crown copyright. All rights reserved. 2015 Licence number 0100031673
© East Anglia Offshore Wind Limited 2015

East Anglia THREE Limited
Study Area

Drg No	6115-525-P610-29.1
Rev	4
Date	30/10/2015
Layout	N/A

Figure 29.1



Rev	Date	By	Comment
4	30/10/15	LA	Final Issue
3	27/07/15	LA	SLA Boundary Revision
2	15/05/14	TR	Boundary Revision

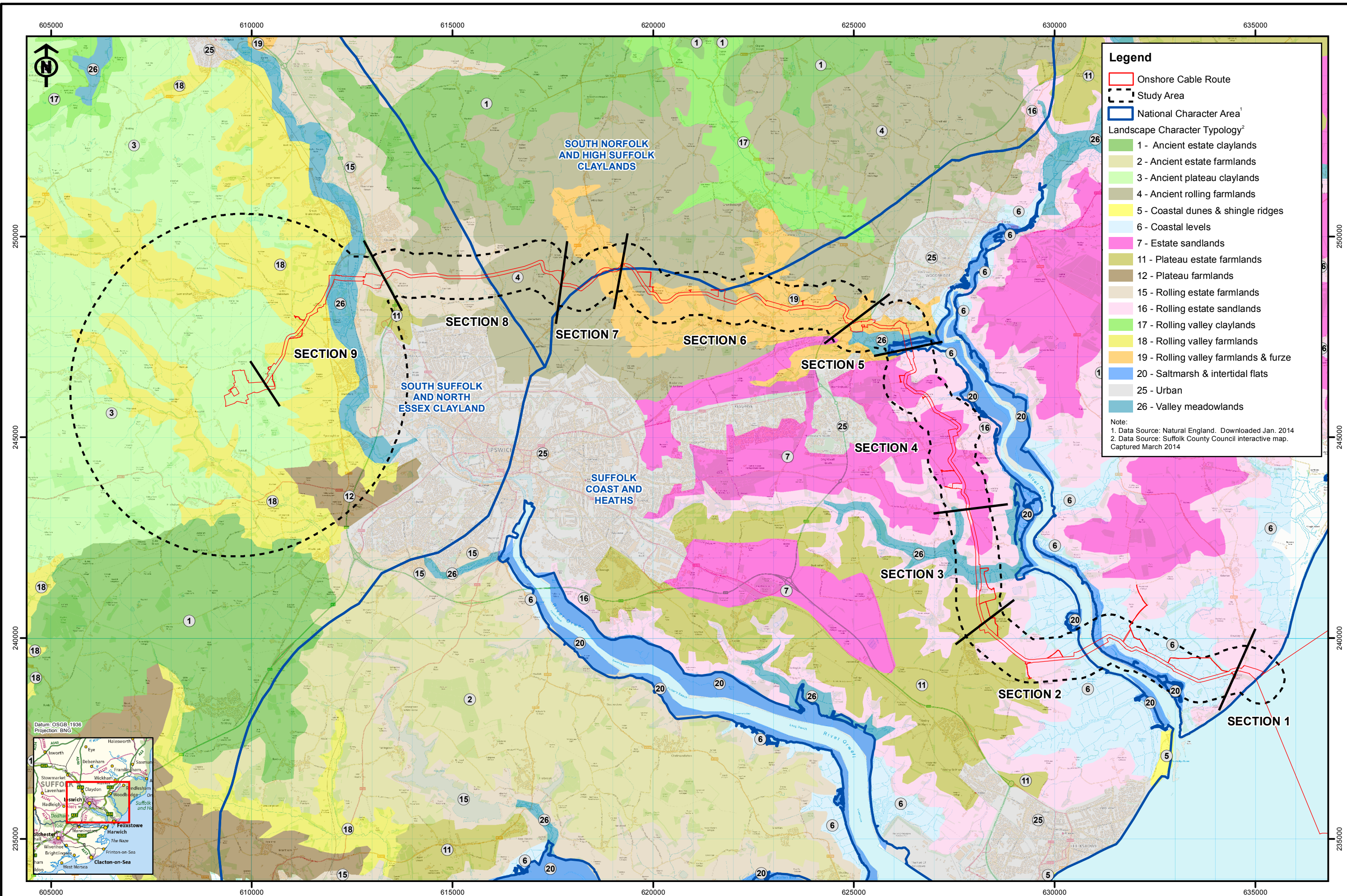
Original A3 Plot Scale 1:85,000

© Crown copyright. All rights reserved. 2015 Licence number 0100031673
 © East Anglia Offshore Wind Limited 2015

East Anglia THREE Limited
 Landscape Designations

Drg No	6115-525-P610-29.2
Rev	4
Date	30/10/2015
Layout	N/A

Figure 29.2



Legend

- Onshore Cable Route
- Study Area
- National Character Area

Landscape Character Typology²

- 1 - Ancient estate claylands
- 2 - Ancient estate farmlands
- 3 - Ancient plateau claylands
- 4 - Ancient rolling farmlands
- 5 - Coastal dunes & shingle ridges
- 6 - Coastal levels
- 7 - Estate sandlands
- 11 - Plateau estate farmlands
- 12 - Plateau farmlands
- 15 - Rolling estate farmlands
- 16 - Rolling estate sandlands
- 17 - Rolling valley claylands
- 18 - Rolling valley farmlands
- 19 - Rolling valley farmlands & furze
- 20 - Saltmarsh & intertidal flats
- 25 - Urban
- 26 - Valley meadowlands

Note:

1. Data Source: Natural England. Downloaded Jan. 2014
2. Data Source: Suffolk County Council interactive map. Captured March 2014



Rev	Date	By	Comment
4	30/10/15	LA	Final Issue
3	27/07/15	LA	Final Draft
2	15/05/14	TR	Boundary Revision

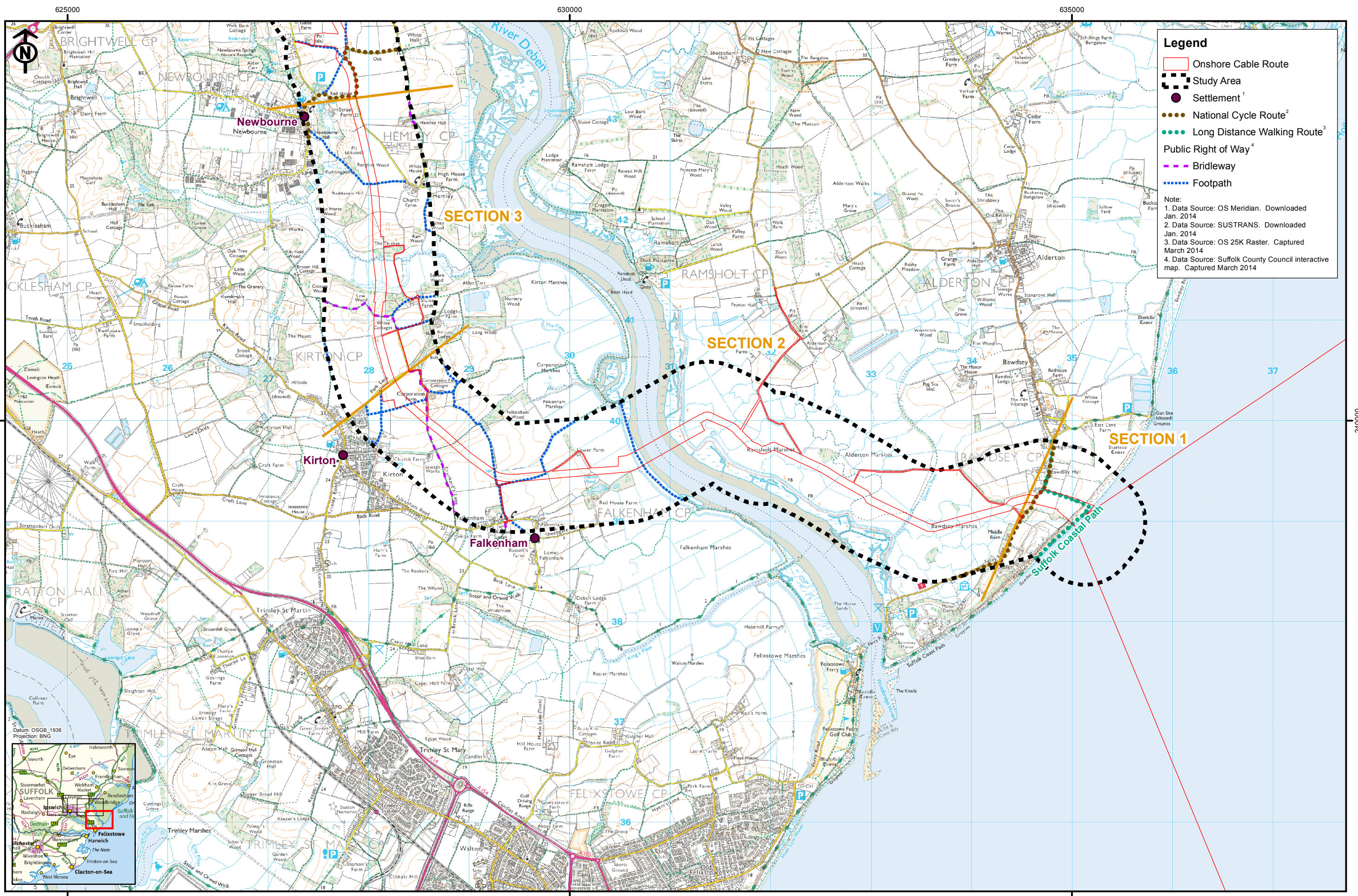
Original A3 Plot Scale 1:85,000

© Crown copyright. All rights reserved. 2015 Licence number 0100031673
© East Anglia Offshore Wind Limited 2015

East Anglia THREE Limited
Landscape Character Assessment

Drg No	6115-525-P610-29.3
Rev	4
Date	30/10/2015
Layout	N/A

Figure 29.3



Legend

- Onshore Cable Route
- Study Area
- Settlement¹
- National Cycle Route²
- Long Distance Walking Route³
- Public Right of Way⁴
- Bridleway
- Footpath

Note:

1. Data Source: OS Meridian. Downloaded Jan. 2014
2. Data Source: SUSTRANS. Downloaded Jan. 2014
3. Data Source: OS 25K Raster. Captured March 2014
4. Data Source: Suffolk County Council interactive map. Captured March 2014



SCOTTISHPOWER RENEWABLES **VATTENFALL**

Rev	Date	By	Comment
4	30/10/15	LA	Final Issue
3	27/07/15	LA	Final Draft
2	15/05/14	TR	Boundary Revision

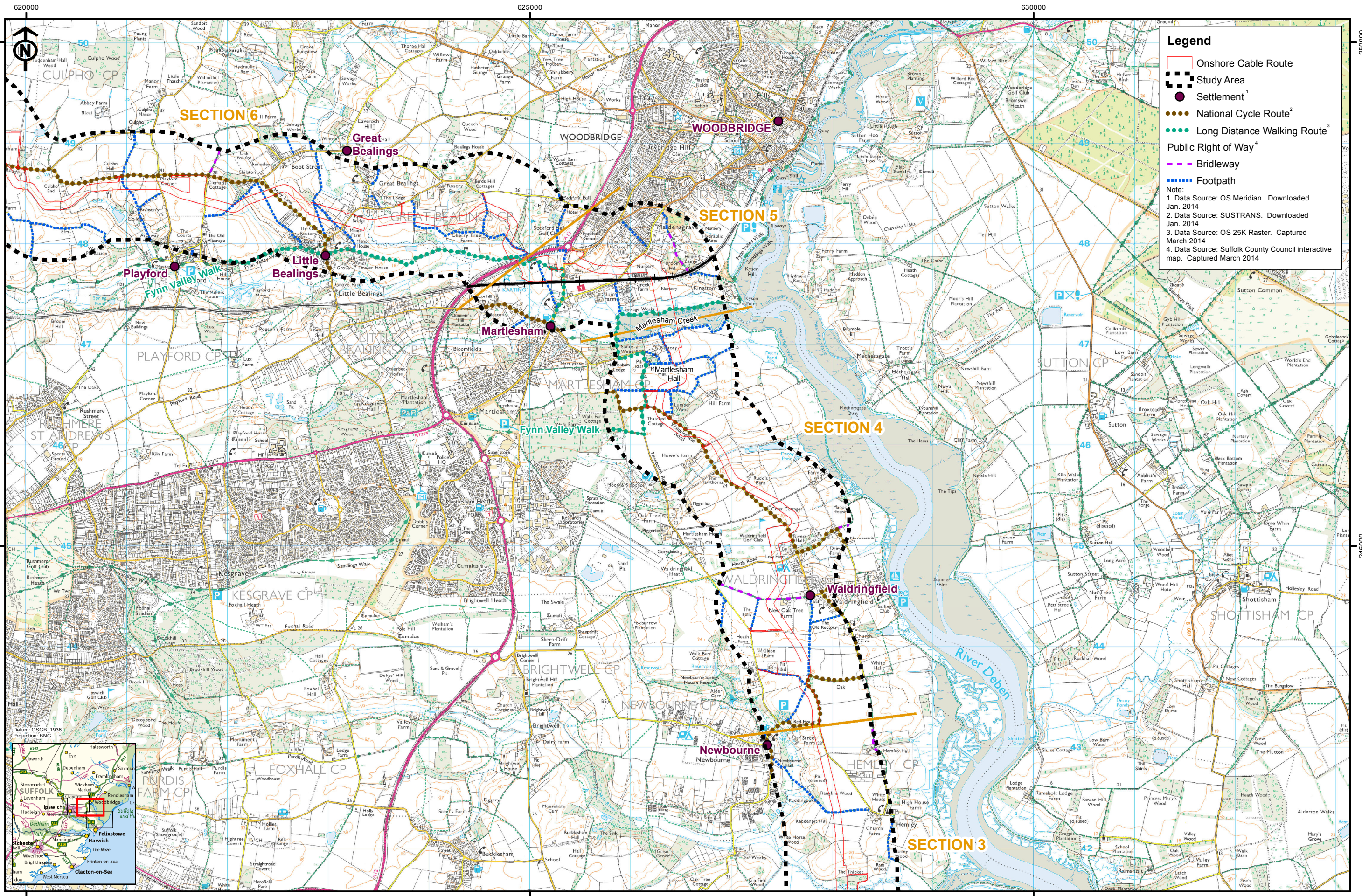
Original A3 Plot Scale 1:35,000

0 0.5 1 km

© Crown copyright. All rights reserved. 2015 Licence number 0100031673
© East Anglia Offshore Wind Limited 2015

East Anglia THREE Limited
Visual Receptors: Sections 1-3
Map 1 of 4

Drg No	6115-525-P610-29.4a
Rev	4
Date	30/10/2015
Layout	N/A
Figure	29.4a



Legend

- Onshore Cable Route
- Study Area
- Settlement¹
- National Cycle Route²
- Long Distance Walking Route³
- Public Right of Way⁴
- Bridleway
- Footpath

Note:
 1. Data Source: OS Meridian. Downloaded Jan. 2014
 2. Data Source: Sustrans. Downloaded Jan. 2014
 3. Data Source: OS 25K Raster. Captured March 2014
 4. Data Source: Suffolk County Council interactive map. Captured March 2014



SCOTTISHPOWER RENEWABLES **VATTENFALL**

Rev	Date	By	Comment
4	30/10/15	LA	Final Issue
3	27/07/15	LA	Final Draft
2	15/05/14	TR	Boundary Revision

Original A3 Plot Scale 1:35,000

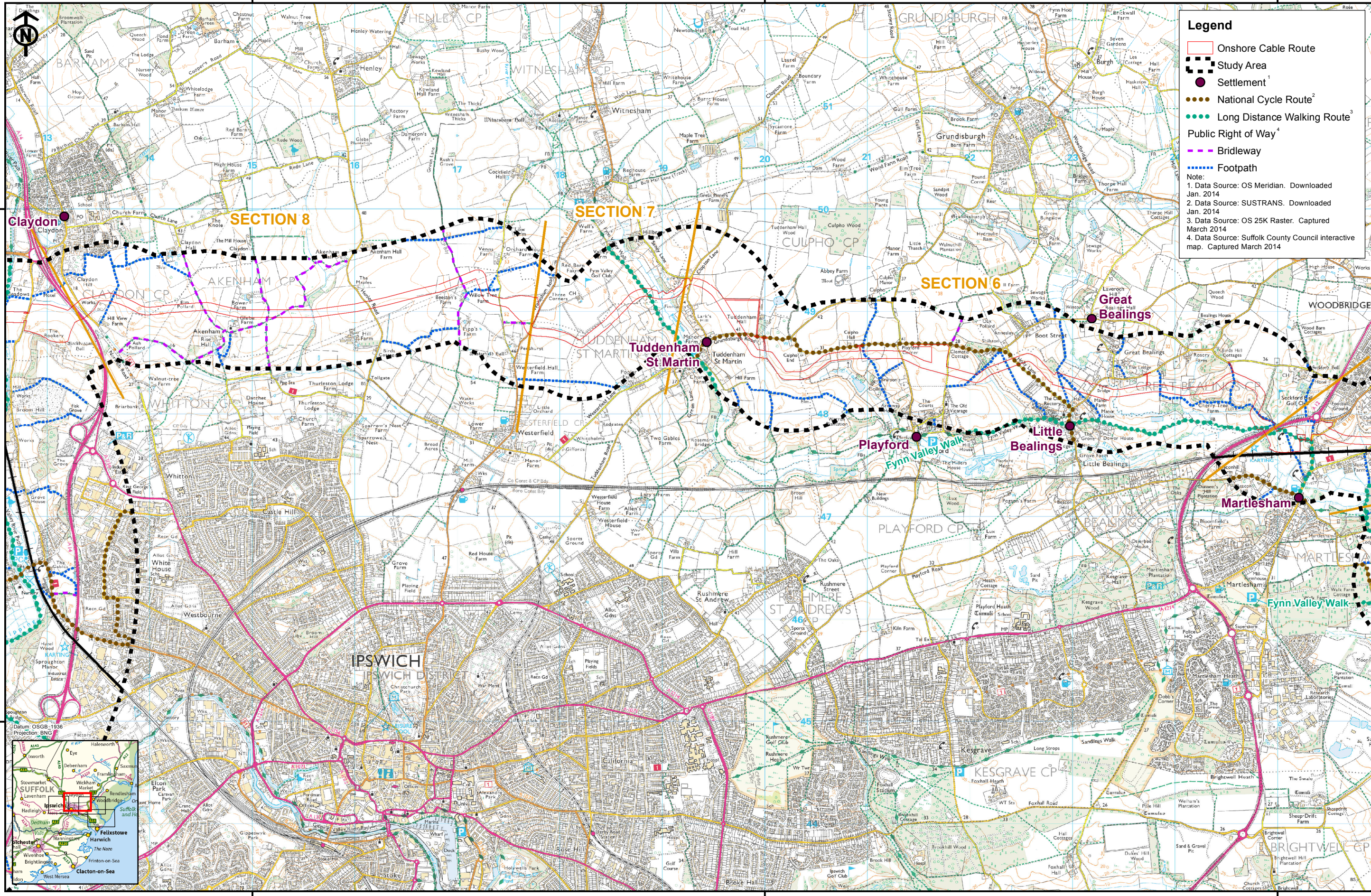
0 0.5 1 km

© Crown copyright. All rights reserved. 2015 Licence number 0100031673
 © East Anglia Offshore Wind Limited 2015

East Anglia THREE Limited
 Visual Receptors: Sections 3-6
 Map 2 of 4

Drg No	6115-525-P610-29.4b
Rev	4
Date	30/10/2015
Layout	N/A

Figure 29.4b



Legend

- Onshore Cable Route
- Study Area
- Settlement¹
- National Cycle Route²
- Long Distance Walking Route³
- Public Right of Way⁴
- Bridleway
- Footpath

Note:

1. Data Source: OS Meridian. Downloaded Jan. 2014
2. Data Source: SUSTRANS. Downloaded Jan. 2014
3. Data Source: OS 25K Raster. Captured March 2014
4. Data Source: Suffolk County Council interactive map. Captured March 2014



SCOTTISHPOWER RENEWABLES **VATTENFALL**

Rev	Date	By	Comment
4	30/10/15	LA	Final Issue
3	27/07/15	LA	Final Draft
2	15/05/14	TR	Boundary Revision

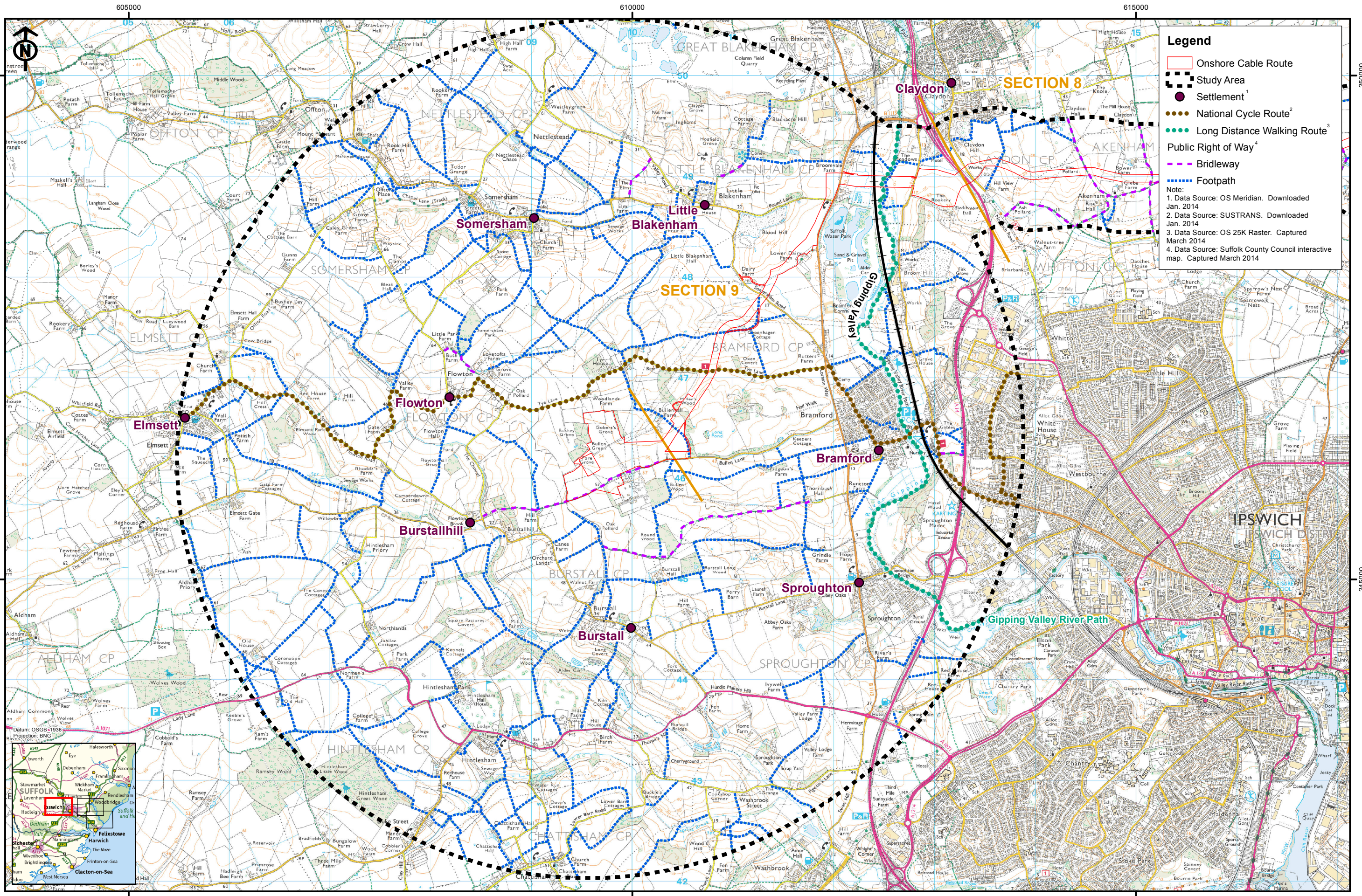
Original A3 Plot Scale 1:35,000

0 0.5 1 km

© Crown copyright. All rights reserved. 2015 Licence number 0100031673
© East Anglia Offshore Wind Limited 2015

East Anglia THREE Limited
Visual Receptors: Sections 6-8
Map 3 of 4

Drg No	6115-525-P610-29.4c	
Rev	4	Figure 29.4c
Date	30/10/2015	
Layout	N/A	



Legend

- Onshore Cable Route
- Study Area
- Settlement¹
- National Cycle Route²
- Long Distance Walking Route³
- Public Right of Way⁴
- Bridleway
- Footpath

Note:

1. Data Source: OS Meridian. Downloaded Jan. 2014
2. Data Source: SUSTRANS. Downloaded Jan. 2014
3. Data Source: OS 25K Raster. Captured March 2014
4. Data Source: Suffolk County Council interactive map. Captured March 2014



SCOTTISHPOWER RENEWABLES **VATTENFALL**

Rev	Date	By	Comment
4	30/07/15	LA	Final Issue
3	27/07/15	LA	Final Draft
2	15/05/14	TR	Boundary Revision

Original A3 Plot Scale 1:35,000

0 0.5 1 km

© Crown copyright. All rights reserved. 2015 Licence number 0100031673
© East Anglia Offshore Wind Limited 2015

East Anglia THREE Limited
Visual Receptors: Sections 9
Map 4 of 4

Drg No	6115-525-P610-29.4d
Rev	4
Date	30/10/2015
Layout	N/A
Figure	29.4d

This Page is Intentionally Blank

Chapter 29(a) Figures End Here