

East Anglia THREE

Chapter 4

Site Selection and Alternatives Figures

Environmental Statement

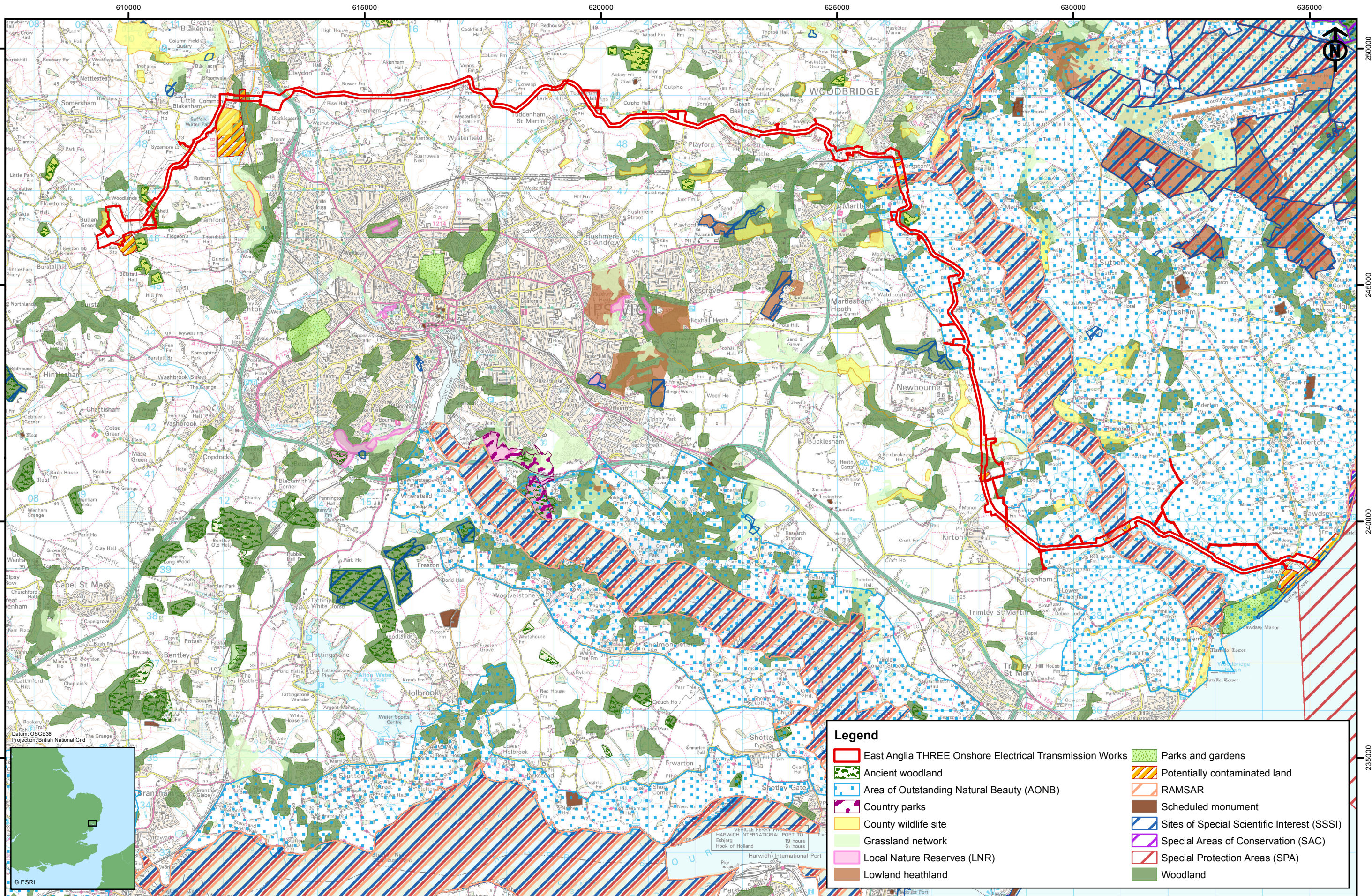
Volume 2

Document Reference – 6.2.4

Author – Royal HaskoningDHV
East Anglia THREE Limited
Date – November 2015
Revision History – Revision A



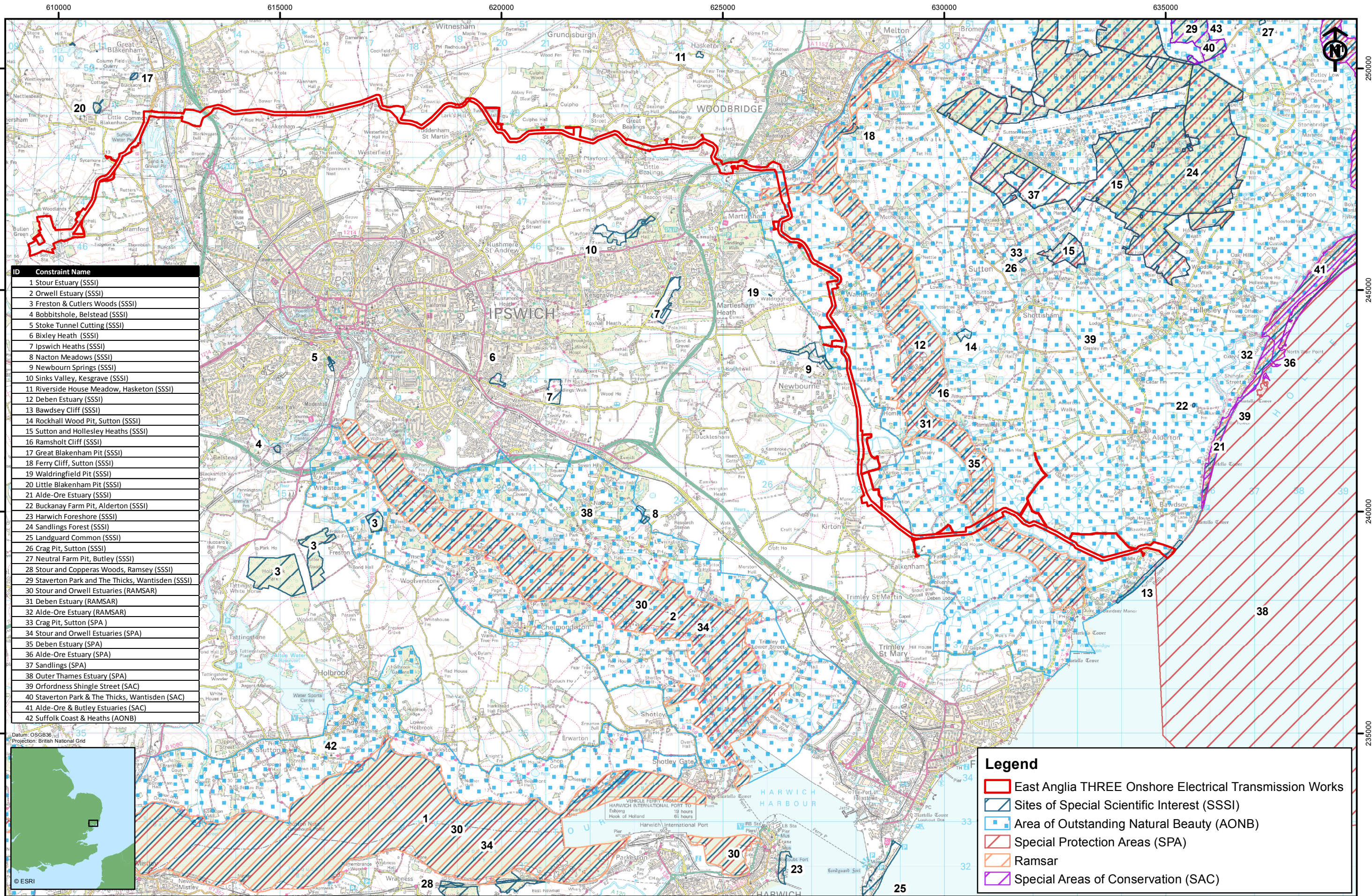
This Page is Intentionally Blank



- Legend**
- East Anglia THREE Onshore Electrical Transmission Works
 - Ancient woodland
 - Area of Outstanding Natural Beauty (AONB)
 - Country parks
 - County wildlife site
 - Grassland network
 - Local Nature Reserves (LNR)
 - Lowland heathland
 - Parks and gardens
 - Potentially contaminated land
 - RAMSAR
 - Scheduled monument
 - Sites of Special Scientific Interest (SSSI)
 - Special Areas of Conservation (SAC)
 - Special Protection Areas (SPA)
 - Woodland

Rev	Date	By	Comment
2	26/10/15	AB	Second issue
1	15/07/15	JE	First issue

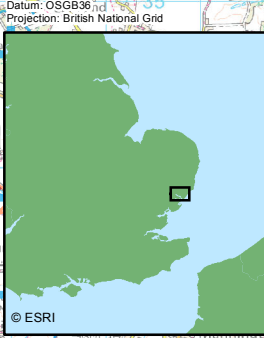
Drg No	EA3-L-094	Volume	2
Rev	2	Figure	4.1
Date	23/10/2015		
Layout	N/A		



ID	Constraint Name
1	Stour Estuary (SSSI)
2	Orwell Estuary (SSSI)
3	Freston & Cutlers Woods (SSSI)
4	Bobbitshole, Belstead (SSSI)
5	Stoke Tunnel Cutting (SSSI)
6	Bixley Heath (SSSI)
7	Ipswich Heaths (SSSI)
8	Nacton Meadows (SSSI)
9	Newbourn Springs (SSSI)
10	Sinks Valley, Kesgrave (SSSI)
11	Riverside House Meadow, Hasketon (SSSI)
12	Deben Estuary (SSSI)
13	Bawdsey Cliff (SSSI)
14	Rockhall Wood Pit, Sutton (SSSI)
15	Sutton and Hollesley Heaths (SSSI)
16	Ramsholt Cliff (SSSI)
17	Great Blakenham Pit (SSSI)
18	Ferry Cliff, Sutton (SSSI)
19	Waldringfield Pit (SSSI)
20	Little Blakenham Pit (SSSI)
21	Alde-Ore Estuary (SSSI)
22	Buckanay Farm Pit, Alderton (SSSI)
23	Harwich Foreshore (SSSI)
24	Sandlings Forest (SSSI)
25	Landguard Common (SSSI)
26	Crag Pit, Sutton (SSSI)
27	Neutral Farm Pit, Butley (SSSI)
28	Stour and Copperas Woods, Ramsey (SSSI)
29	Staverton Park and The Thicks, Wantisden (SSSI)
30	Stour and Orwell Estuaries (RAMSAR)
31	Deben Estuary (RAMSAR)
32	Alde-Ore Estuary (RAMSAR)
33	Crag Pit, Sutton (SPA)
34	Stour and Orwell Estuaries (SPA)
35	Deben Estuary (SPA)
36	Alde-Ore Estuary (SPA)
37	Sandlings (SPA)
38	Outer Thames Estuary (SPA)
39	Orfordness Shingle Street (SAC)
40	Staverton Park & The Thicks, Wantisden (SAC)
41	Alde-Ore & Butley Estuaries (SAC)
42	Suffolk Coast & Heaths (AONB)

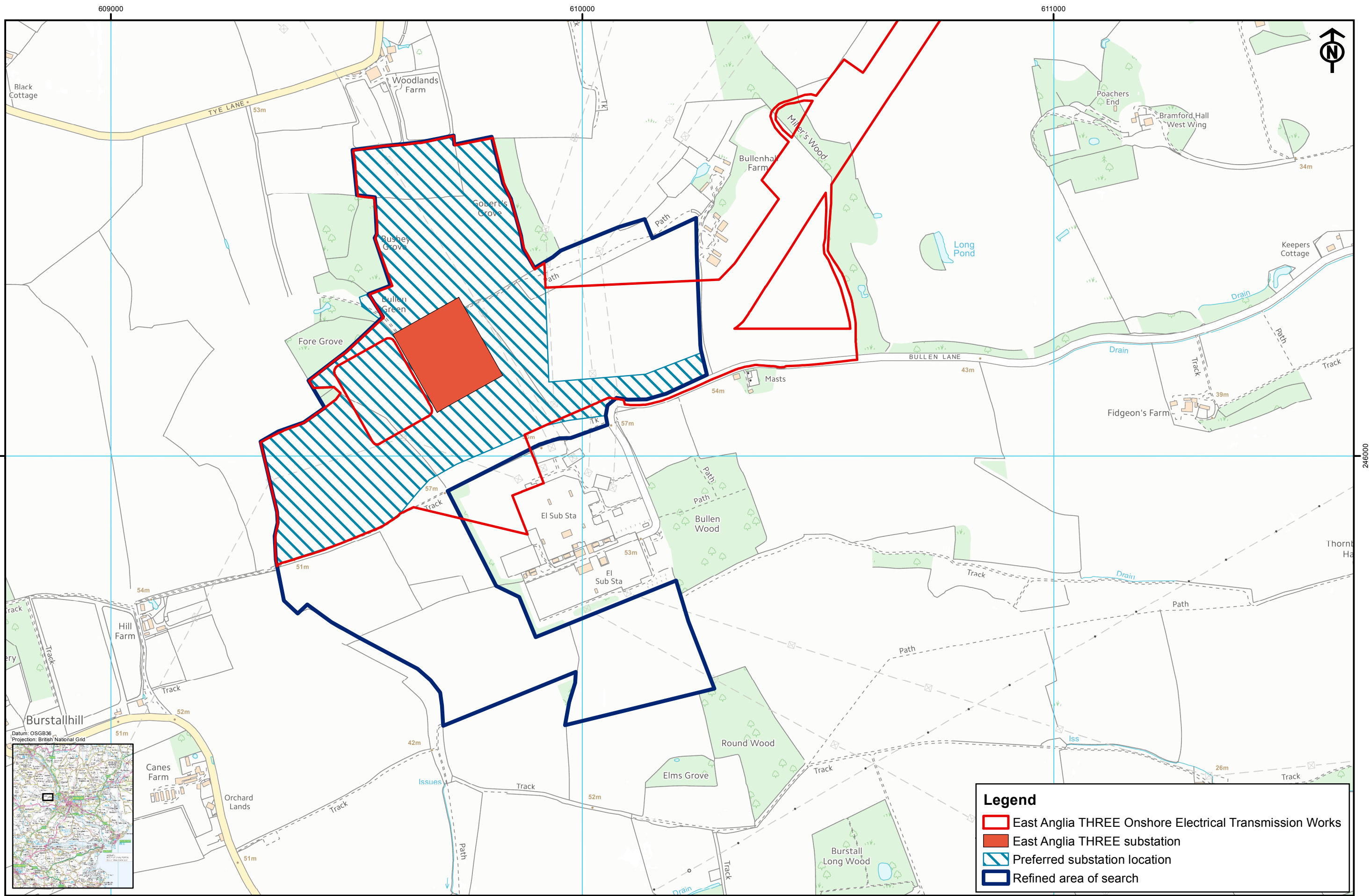
Legend

- East Anglia THREE Onshore Electrical Transmission Works
- Sites of Special Scientific Interest (SSSI)
- Area of Outstanding Natural Beauty (AONB)
- Special Protection Areas (SPA)
- Ramsar
- Special Areas of Conservation (SAC)



Rev	Date	By	Comment
2	23/10/15	AB	Second issue
1	18/07/15	JE	First issue

Drg No	EA3-L-095	Volume	2
Rev	2	Figure	4.2
Date	23/10/2015		
Layout	N/A		

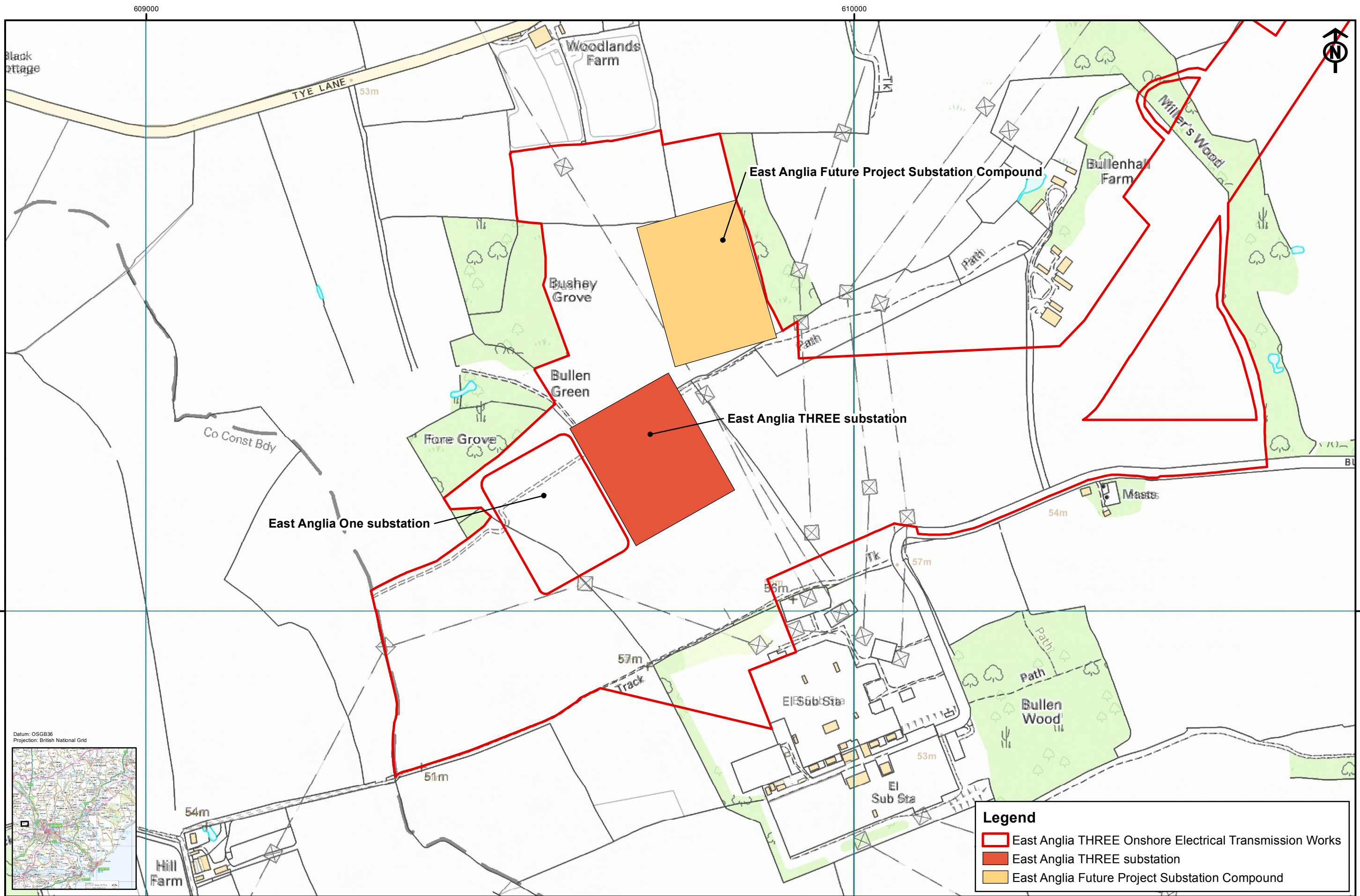


Legend

- East Anglia THREE Onshore Electrical Transmission Works
- East Anglia THREE substation
- Preferred substation location
- Refined area of search

Rev	Date	By	Comment
2	26/10/14	AB	Second issue
1	21/02/14	JE	First issue

Drg No	EA3-L-096	Volume	2
Rev	2	Figure	4.3
Date	26/10/14		
Layout	N/A		



Legend	
	East Anglia THREE Onshore Electrical Transmission Works
	East Anglia THREE substation
	East Anglia Future Project Substation Compound

Rev	Date	By	Comment
2	23/10/15	AB	Second issue
1	18/07/15	JE	First issue

Drg No	EA3-L-097	Volume	2
Rev	2	Figure	4.4
Date	23/10/2015		
Layout	N/A		

Chapter 4 Figures End Here