

East Anglia THREE

Chapter 5

Description of the Development Figures

Environmental Statement

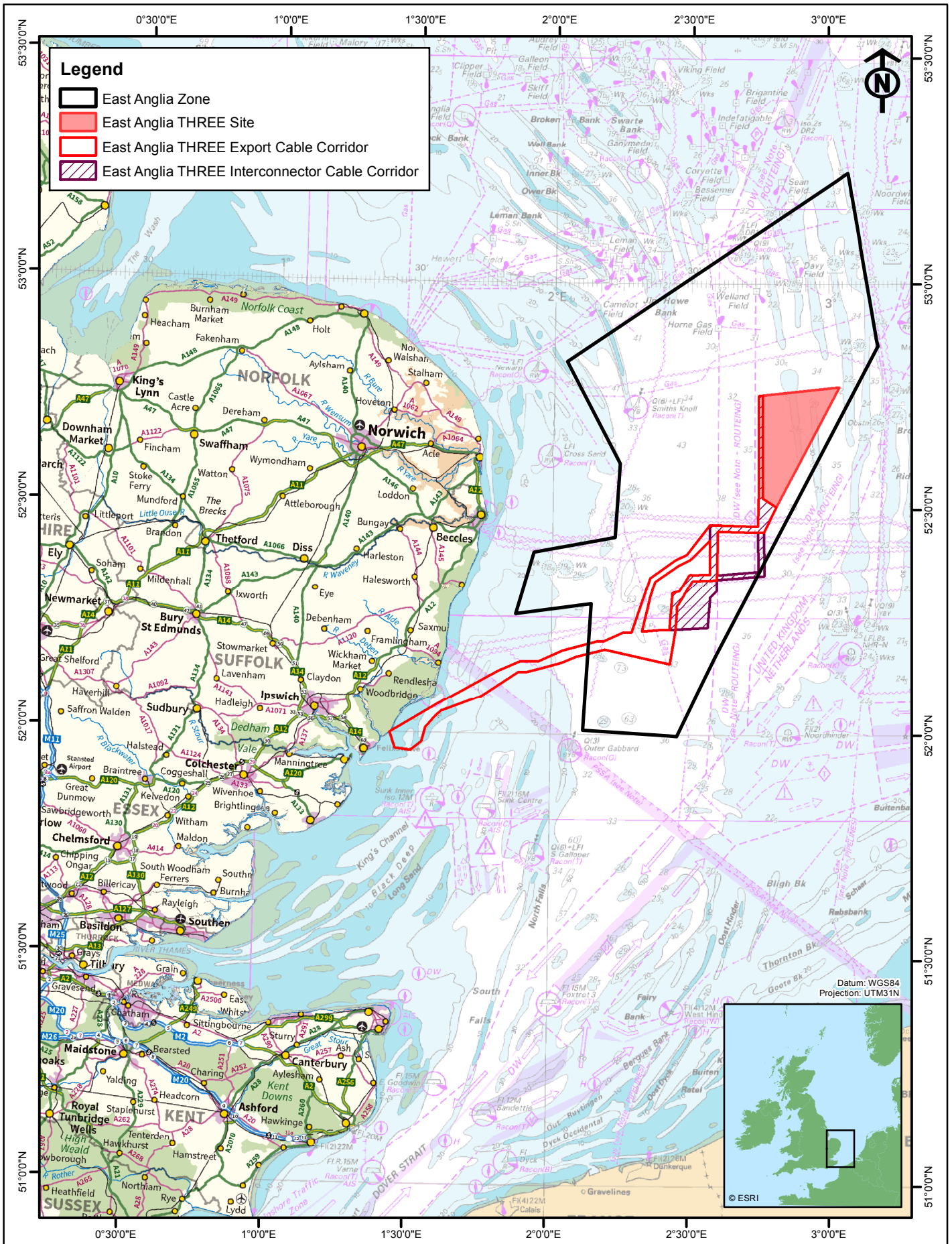
Volume 2

Document Reference – 6.2.5

Author – Royal HaskoningDHV
East Anglia THREE Limited
Date – November 2015
Revision History – Revision A



This Page is Intentionally Blank



Legend

- East Anglia Zone
- East Anglia THREE Site
- East Anglia THREE Export Cable Corridor
- East Anglia THREE Interconnector Cable Corridor

VATTENFALL

SCOTTISHPOWER RENEWABLES

Contains Ordnance Survey data © Crown Copyright and database right 2015.
 © East Anglia Offshore Wind Limited 2015
 © British Crown and SeaZone Solutions Limited. All rights reserved. Products Licence No. 082010.001. This product has been derived in part from material obtained from the UK Hydrographic Office with the permission of the Controller of Her Majesty's Stationary Office and the UK Hydrographic Office (www.ukho.gov.uk). NOT TO BE USED FOR NAVIGATION

East Anglia THREE Limited
 Development area offshore

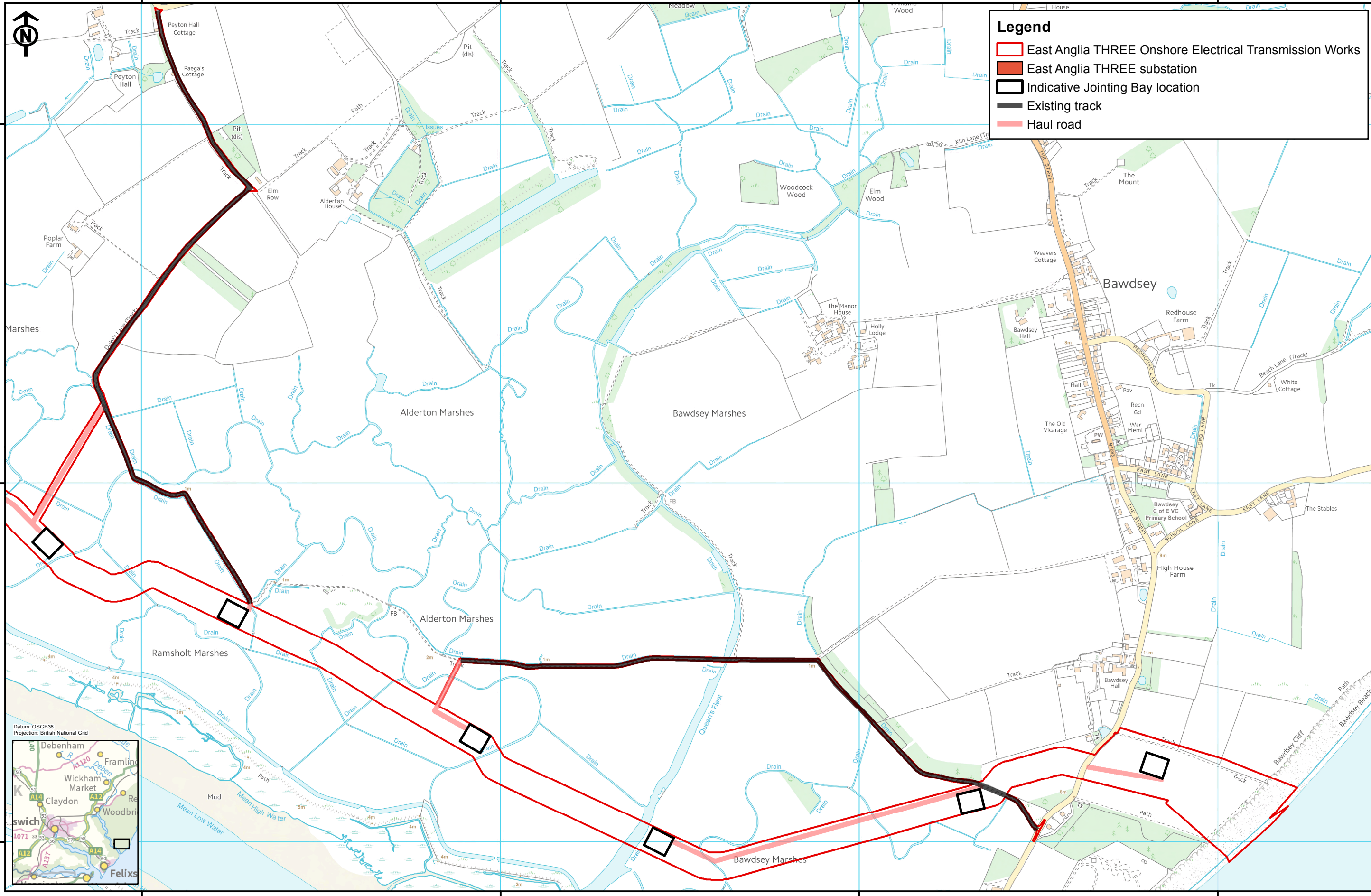
1	20/10/15	JE	Second Issue
Rev	Date	By	Comment

Original A4	0 5 10 km
Plot Scale	
1:1,250,000	0 2 4 6 nm

Volume 2		Figure 5.1	
Layout	Date	Rev	Dwg No.
N/A	20/10/15	1	EA3-O-110

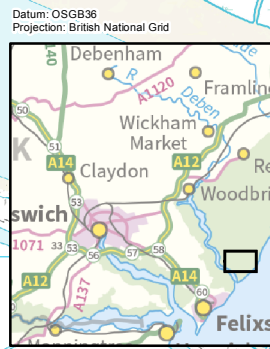
Ref:

This Page is Intentionally Blank



Legend

- East Anglia THREE Onshore Electrical Transmission Works
- East Anglia THREE substation
- Indicative Jointing Bay location
- Existing track
- Haul road



SCOTTISHPOWER RENEWABLES **VATTENFALL**

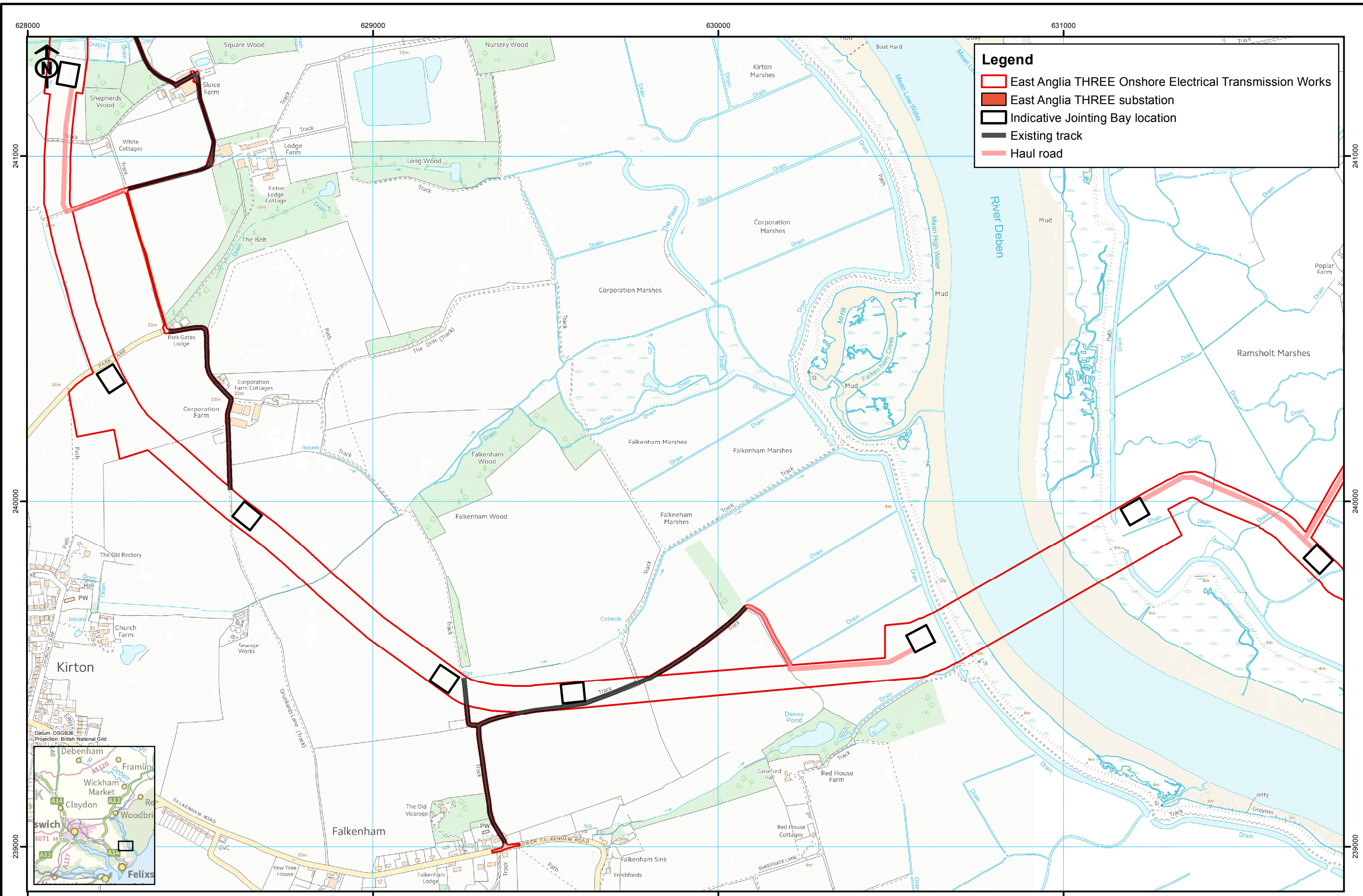
Rev	Date	By	Comment
2	20/10/15	JE	Second issue
1	09/09/15	BN	First issue

Original A3 Plot Scale 1:10,000

© Crown Copyright 2015. All rights reserved. Ordnance Survey Licence 0100031673.

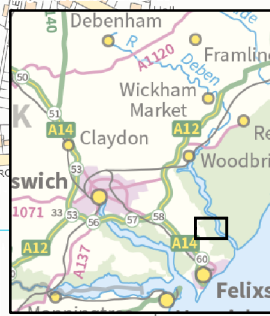
East Anglia THREE Limited
 Development area onshore
 (Sheet 1 of 10)

Drg No	EA3-L-111	Volume	2
Rev	2	Figure	5.2a
Date	20/10/2015		
Layout	N/A		

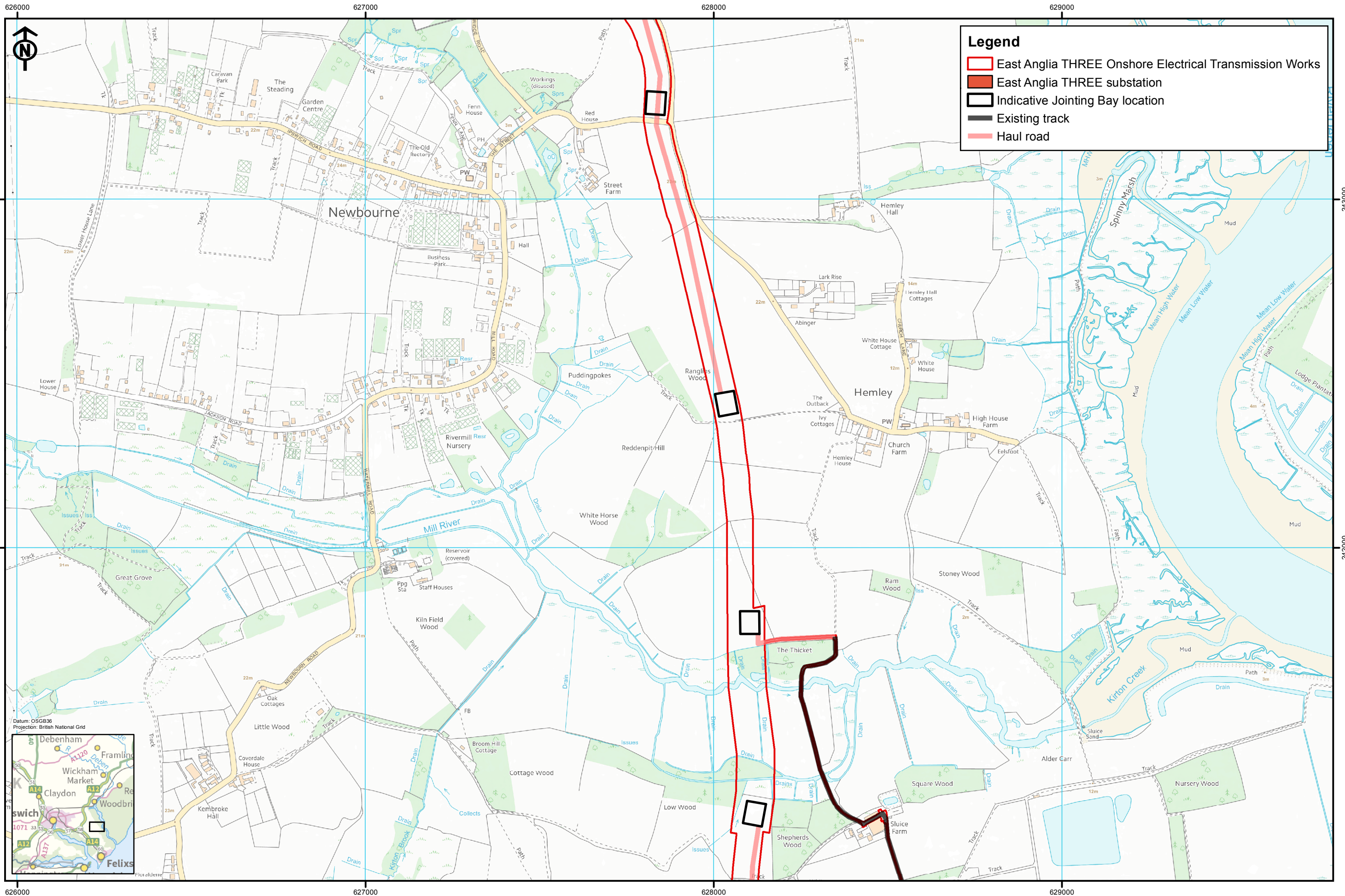


Legend

- East Anglia THREE Onshore Electrical Transmission Works
- East Anglia THREE substation
- Indicative Jointing Bay location
- Existing track
- Haul road

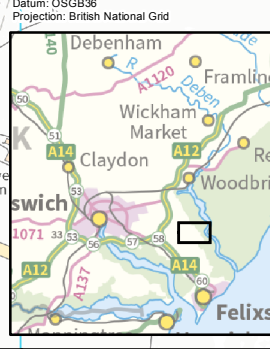


	<table border="1" style="width: 100%; border-collapse: collapse;"> <thead> <tr> <th>Rev</th> <th>Date</th> <th>By</th> <th>Comment</th> </tr> </thead> <tbody> <tr> <td>2</td> <td>20/10/15</td> <td>JE</td> <td>Second issue</td> </tr> <tr> <td>1</td> <td>09/09/15</td> <td>BN</td> <td>First issue</td> </tr> </tbody> </table>	Rev	Date	By	Comment	2	20/10/15	JE	Second issue	1	09/09/15	BN	First issue	<p>Original A3 Plot Scale 1:10,000</p> <p>© Crown Copyright 2015. All rights reserved. Ordnance Survey Licence 0100031673.</p>	<p>East Anglia THREE Limited Development area onshore (Sheet 2 of 10)</p>	<table border="1" style="width: 100%; border-collapse: collapse;"> <tr> <td>Drg No</td> <td>EA3-L-111</td> <td>Volume</td> <td>2</td> </tr> <tr> <td>Rev</td> <td>2</td> <td>Figure</td> <td>5.2b</td> </tr> <tr> <td>Date</td> <td>20/10/2015</td> <td></td> <td></td> </tr> <tr> <td>Layout</td> <td>N/A</td> <td></td> <td></td> </tr> </table>	Drg No	EA3-L-111	Volume	2	Rev	2	Figure	5.2b	Date	20/10/2015			Layout	N/A		
Rev	Date	By	Comment																													
2	20/10/15	JE	Second issue																													
1	09/09/15	BN	First issue																													
Drg No	EA3-L-111	Volume	2																													
Rev	2	Figure	5.2b																													
Date	20/10/2015																															
Layout	N/A																															



Legend

- East Anglia THREE Onshore Electrical Transmission Works
- East Anglia THREE substation
- Indicative Jointing Bay location
- Existing track
- Haul road



SCOTTISHPOWER RENEWABLES **VATTENFALL**

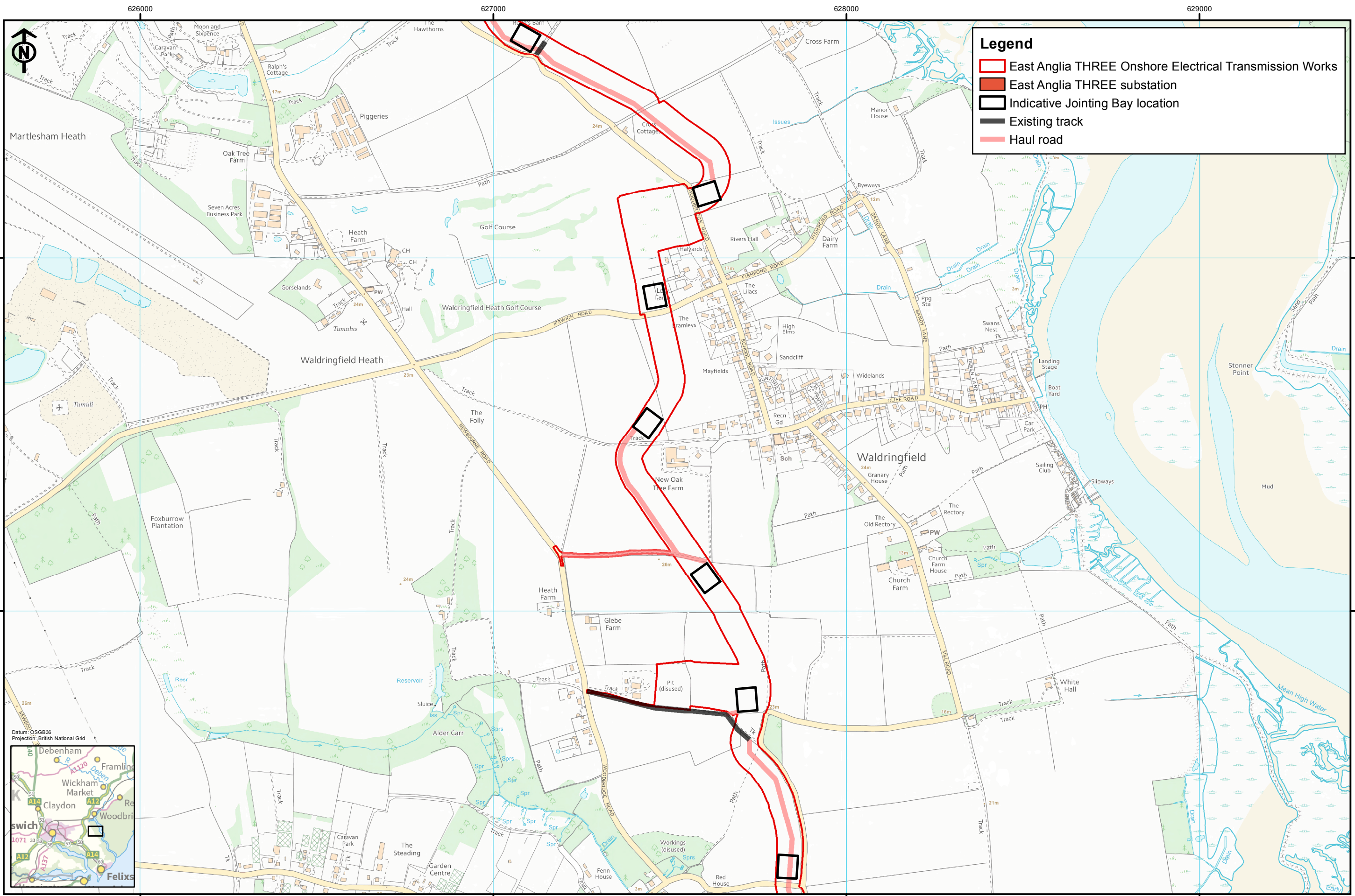
Rev	Date	By	Comment
2	20/10/15	JE	Second issue
1	09/09/15	BN	First issue

Original A3 Plot Scale 1:10,000

© Crown Copyright 2015. All rights reserved. Ordnance Survey Licence 0100031673.

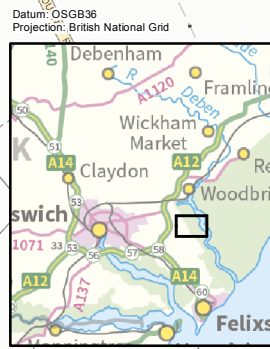
East Anglia THREE Limited
 Development area onshore
 (Sheet 3 of 10)

Drg No	EA3-L-111	Volume	2
Rev	2	Figure	5.2c
Date	20/10/2015		
Layout	N/A		



Legend

- East Anglia THREE Onshore Electrical Transmission Works
- East Anglia THREE substation
- Indicative Jointing Bay location
- Existing track
- Haul road



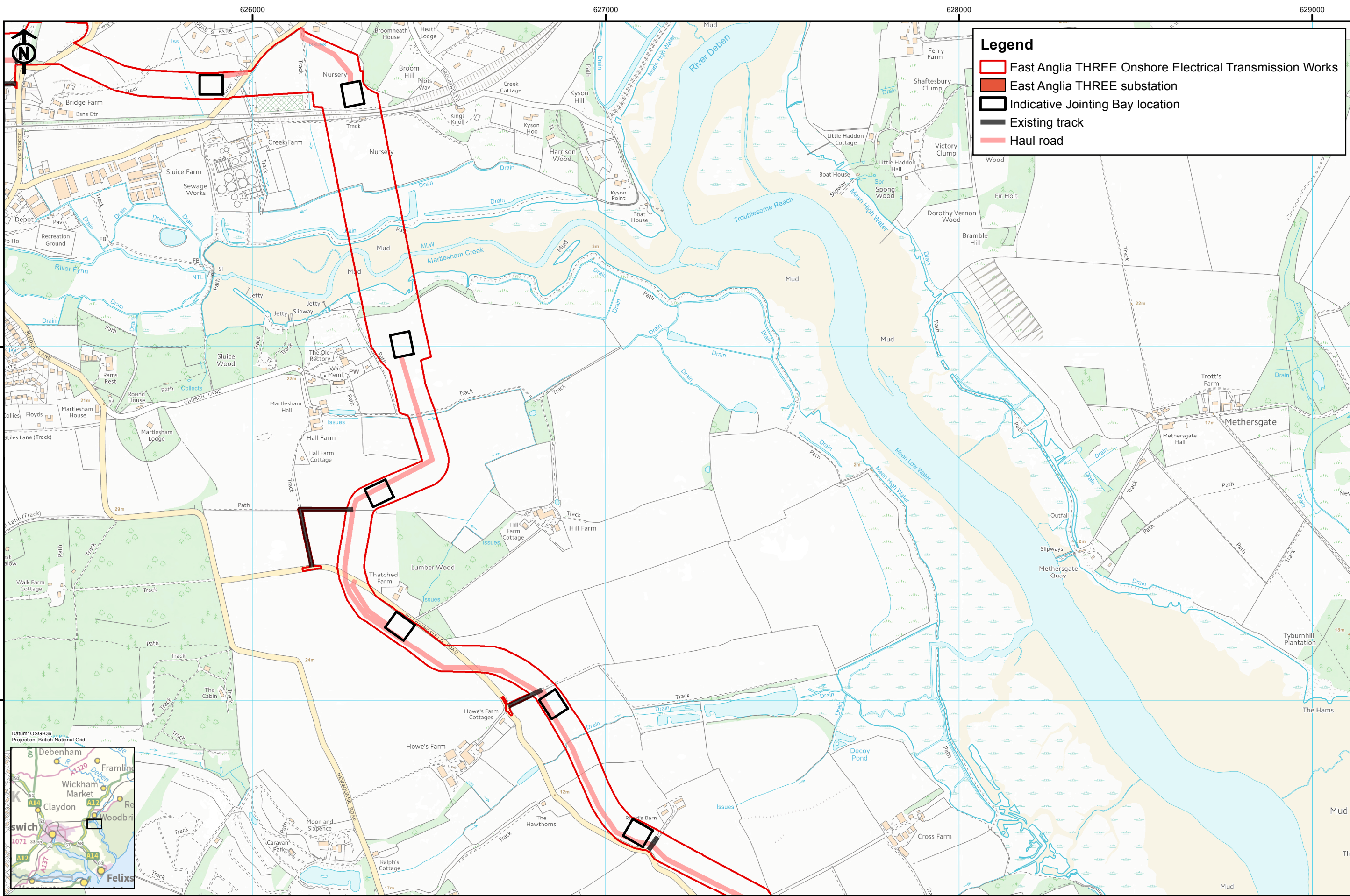
Rev	Date	By	Comment
2	20/10/15	JE	Second issue
1	09/09/15	BN	First issue

Original A3 Plot Scale 1:10,000

© Crown Copyright 2015. All rights reserved. Ordnance Survey Licence 0100031673.

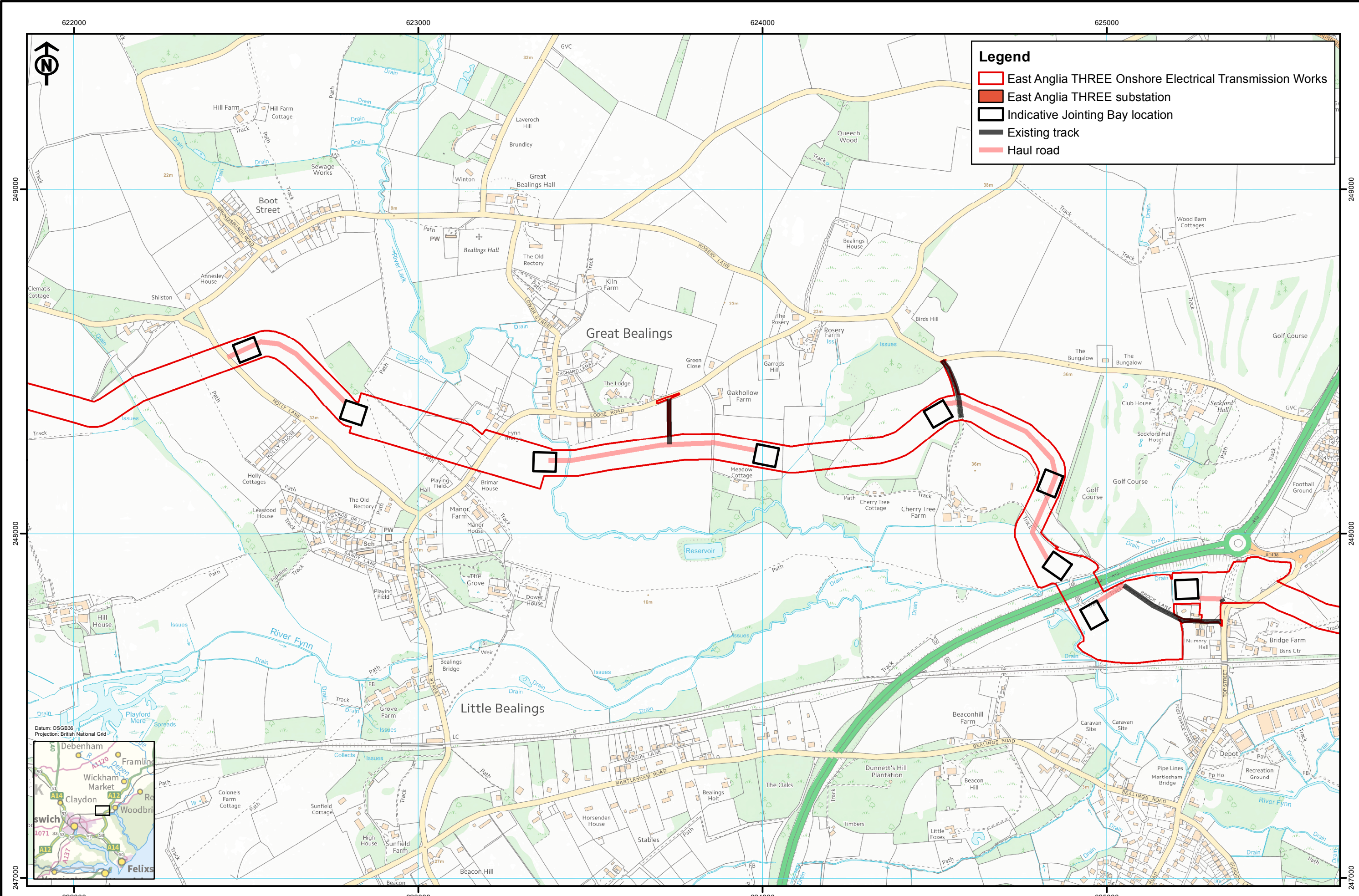
East Anglia THREE Limited
 Development area onshore
 (Sheet 4 of 10)

Drg No	EA3-L-111	Volume	2
Rev	2	Figure	5.2d
Date	20/10/2015		
Layout	N/A		



Rev	Date	By	Comment
2	20/10/15	JE	Second issue
1	09/09/15	BN	First issue

Drg No	EA3-L-111	Volume	2
Rev	2	Figure	5.2e
Date	20/10/2015		
Layout	N/A		



Legend

- East Anglia THREE Onshore Electrical Transmission Works
- East Anglia THREE substation
- Indicative Jointing Bay location
- Existing track
- Haul road



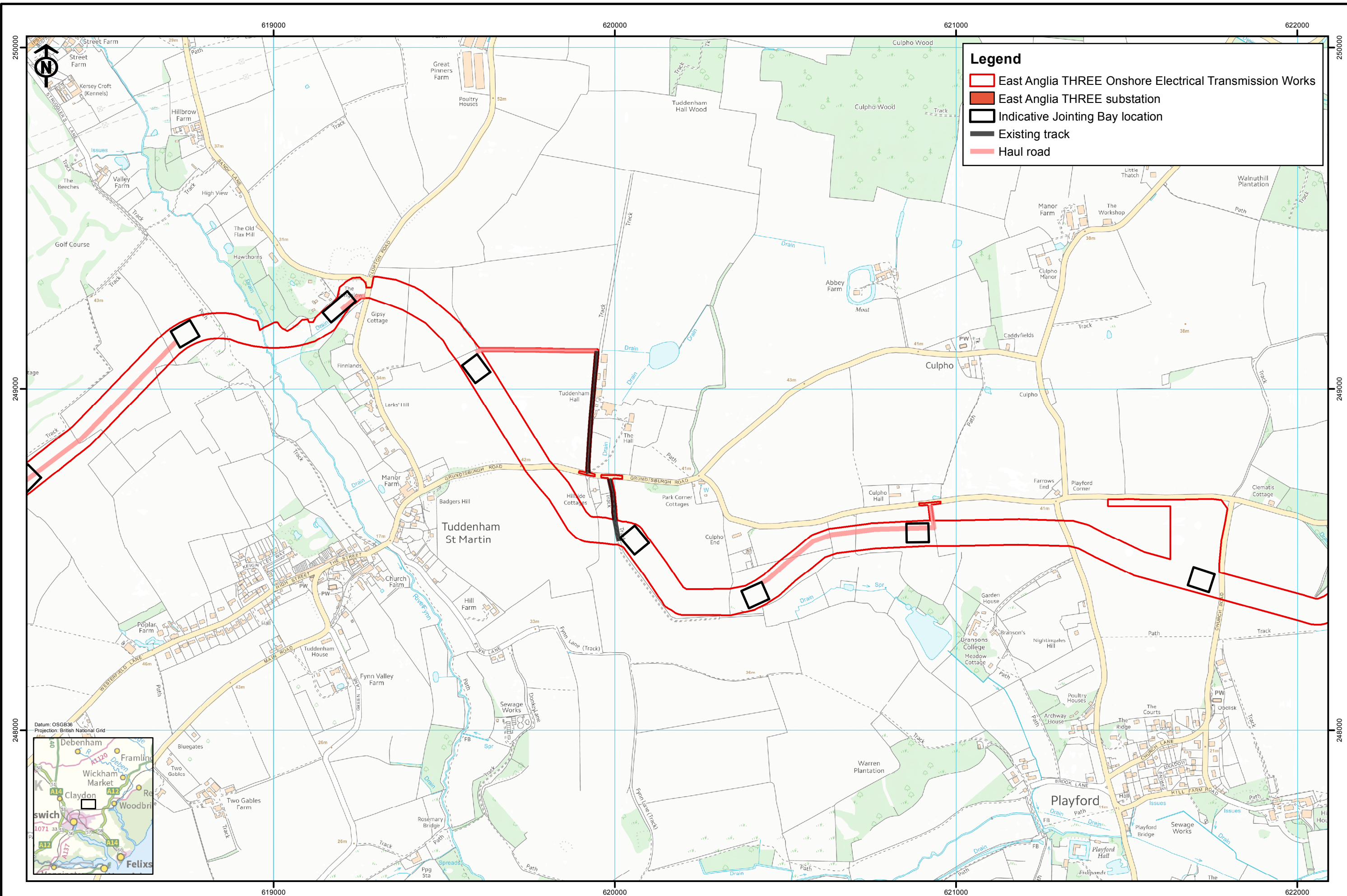
Rev	Date	By	Comment
2	20/10/15	JE	Second issue
1	09/09/15	BN	First issue

Original A3 Plot Scale 1:10,000

© Crown Copyright 2015. All rights reserved. Ordnance Survey Licence 0100031673.

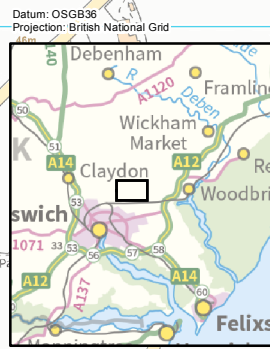
East Anglia THREE Limited
 Development area onshore
 (Sheet 6 of 10)

Drg No	EA3-L-111	Volume	2
Rev	2	Figure	5.2f
Date	20/10/2015		
Layout	N/A		



Legend

- East Anglia THREE Onshore Electrical Transmission Works
- East Anglia THREE substation
- Indicative Jointing Bay location
- Existing track
- Haul road



SCOTTISHPOWER RENEWABLES **VATTENFALL**

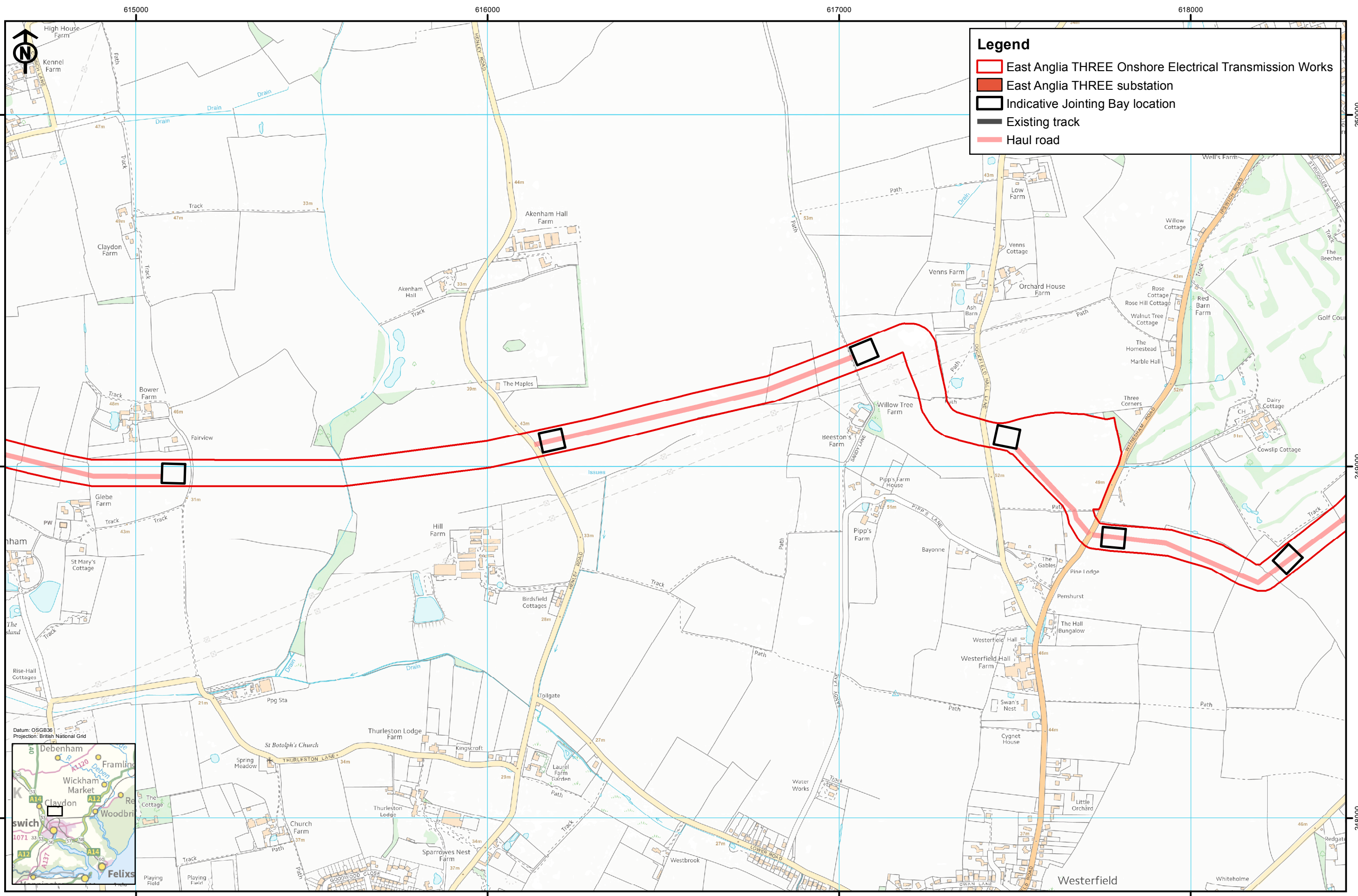
Rev	Date	By	Comment
2	20/10/15	JE	Second issue
1	09/09/15	BN	First issue

Original A3 Plot Scale 1:10,000

© Crown Copyright 2015. All rights reserved. Ordnance Survey Licence 0100031673.

East Anglia THREE Limited
 Development area onshore
 (Sheet 7 of 10)

Drg No	EA3-L-111	Volume	2
Rev	2	Figure	5.2g
Date	20/10/2015		
Layout	N/A		



Legend

- East Anglia THREE Onshore Electrical Transmission Works
- East Anglia THREE substation
- Indicative Jointing Bay location
- Existing track
- Haul road



SCOTTISHPOWER RENEWABLES **VATTENFALL**

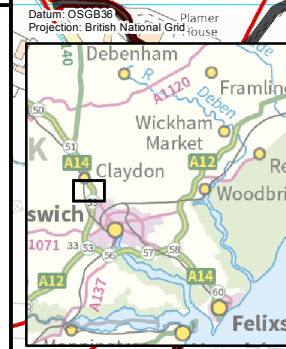
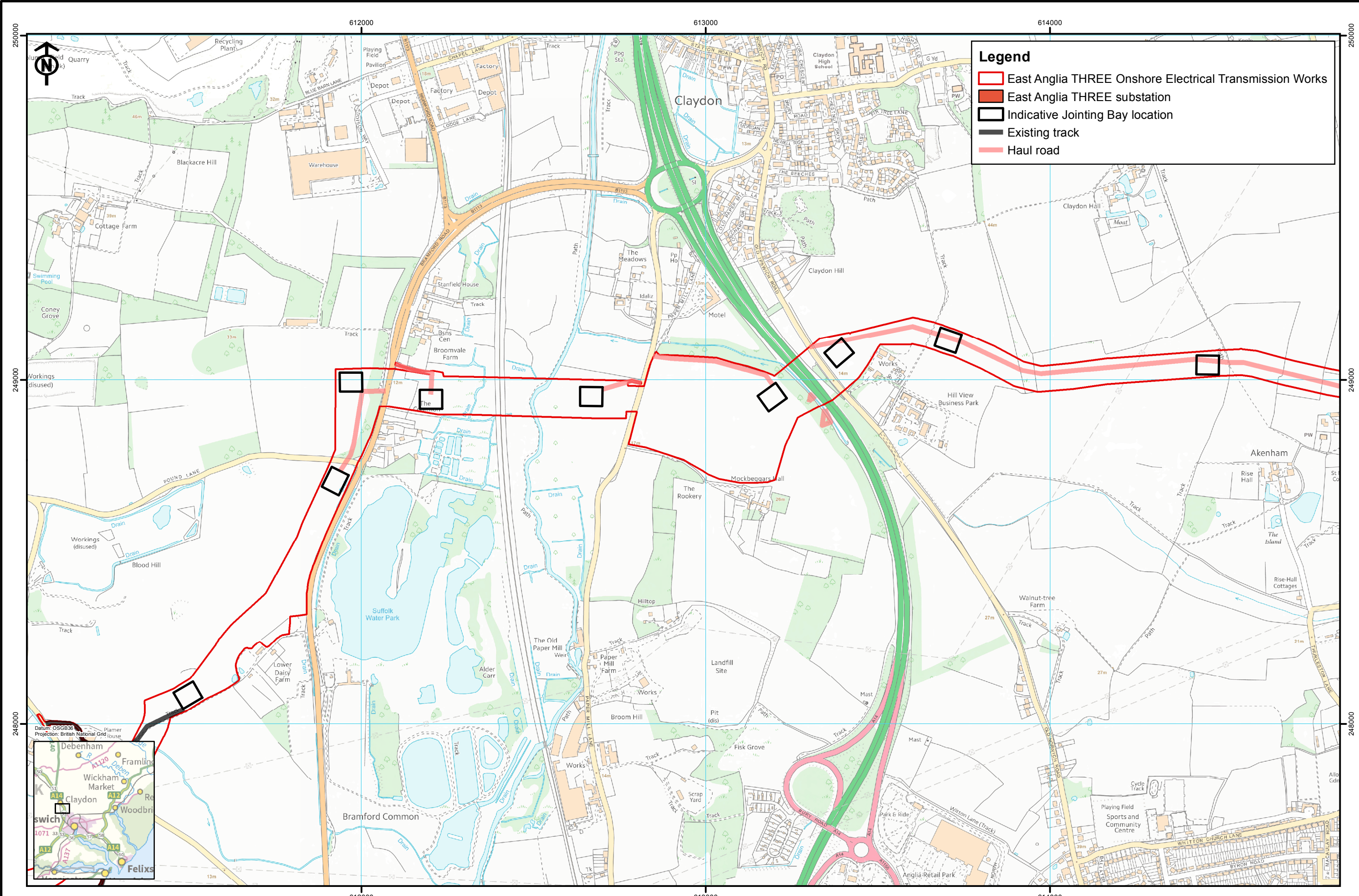
Rev	Date	By	Comment
2	20/10/15	JE	Second issue
1	09/09/15	BN	First issue

Original A3 Plot Scale 1:10,000

© Crown Copyright 2015. All rights reserved. Ordnance Survey Licence 0100031673.

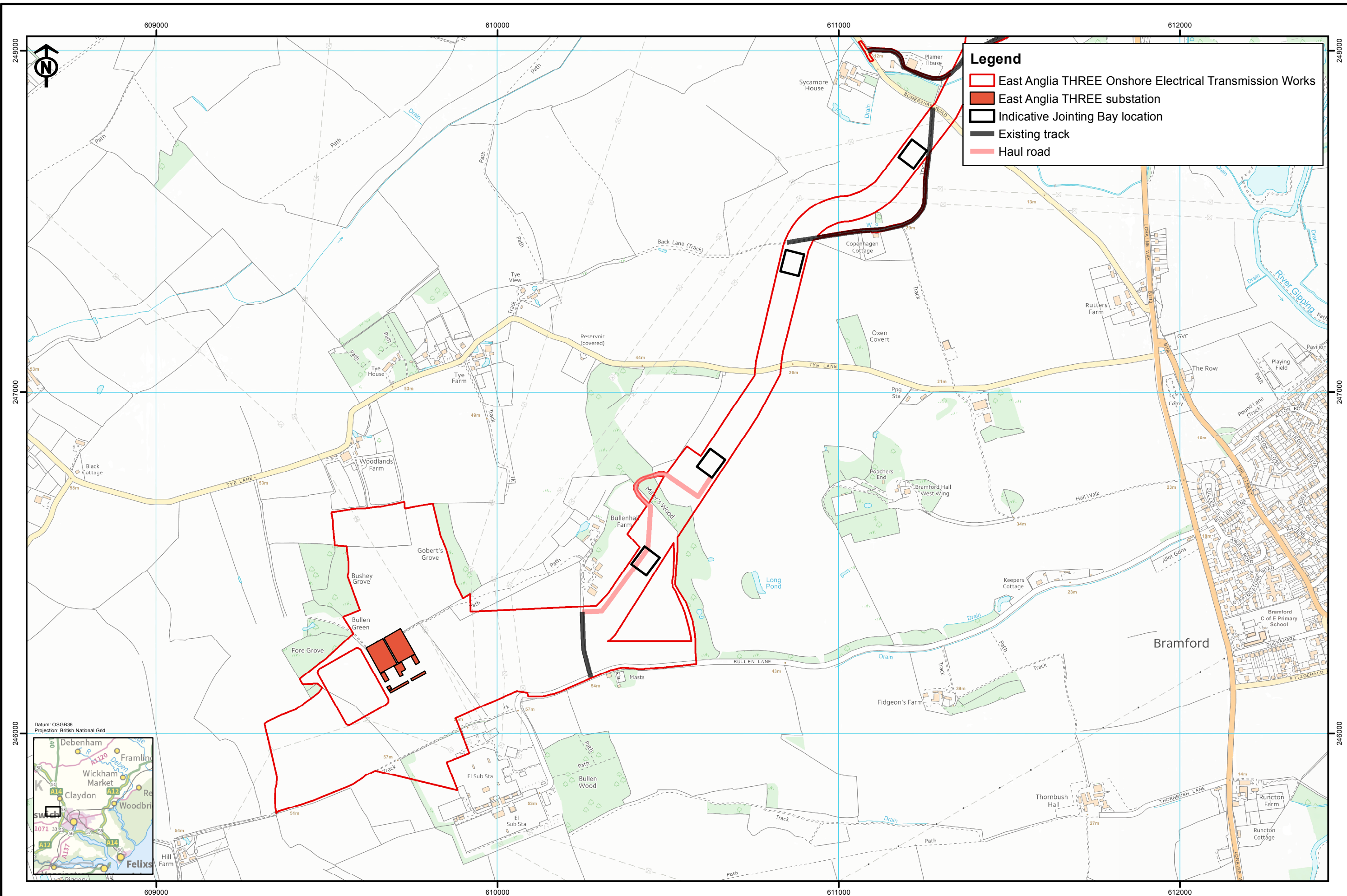
East Anglia THREE Limited
 Development area onshore
 (Sheet 8 of 10)

Drg No	EA3-L-111	Volume	2
Rev	2	Figure	5.2h
Date	20/10/2015		
Layout	N/A		



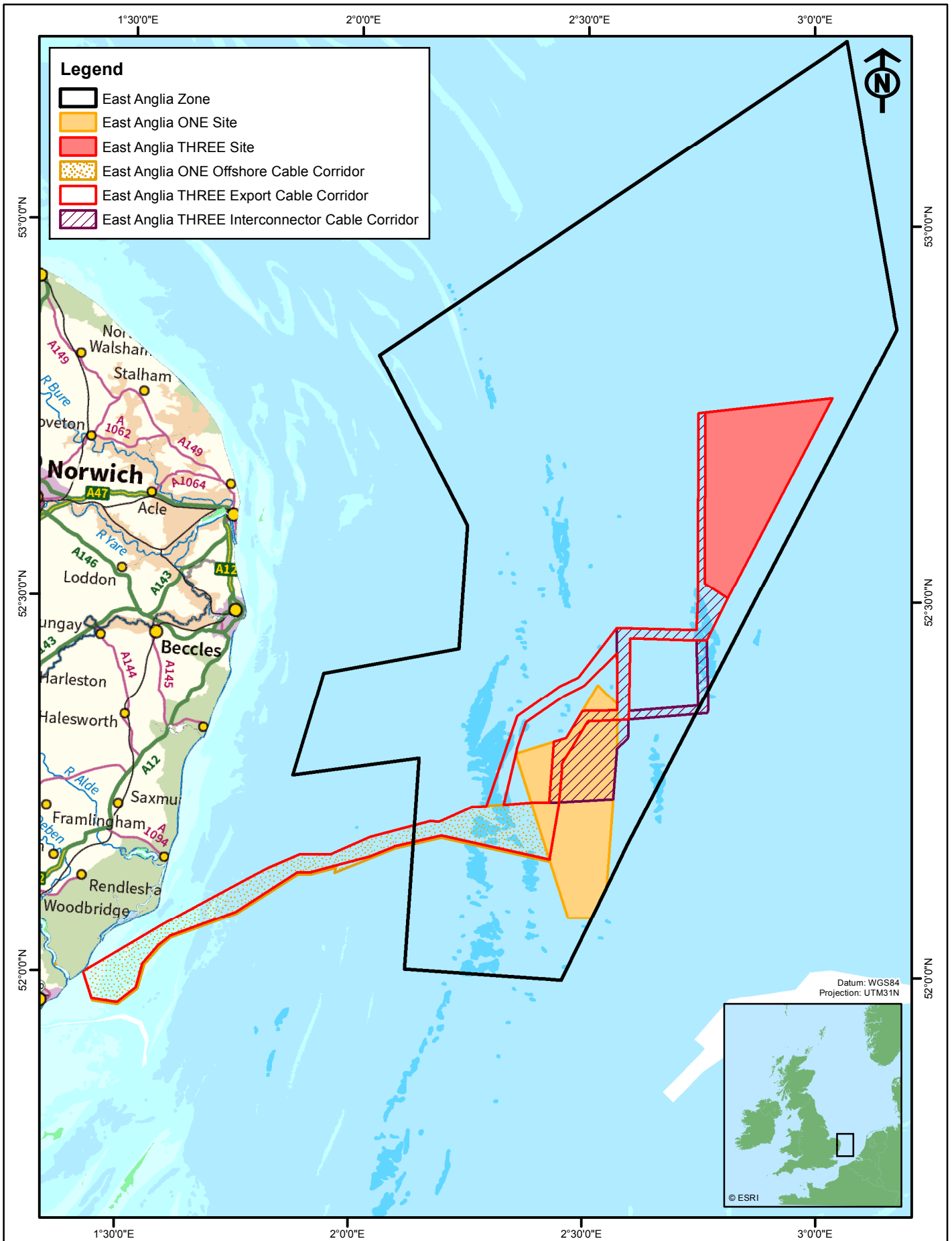
Rev	Date	By	Comment
2	20/10/15	JE	Second issue
1	09/09/15	BN	First issue

Drg No	EA3-L-111	Volume	2
Rev	2	Figure	5.2i
Date	20/10/2015		
Layout	N/A		



Rev	Date	By	Comment
2	20/10/15	JE	Second issue
1	09/09/15	BN	First issue

Drg No	EA3-L-111	Volume	2
Rev	2	Figure	5.2j
Date	20/10/2015		
Layout	N/A		



Contains Ordnance Survey data © Crown
 Copyright and database right 2015.
 © East Anglia Offshore Wind Limited 2015.
 © British Crown and SeaZone Solutions Limited.
 All rights reserved. Products Licence No. 082010.001.

East Anglia THREE Limited
 East Anglia THREE and East Anglia ONE offshore cable corridor overlap

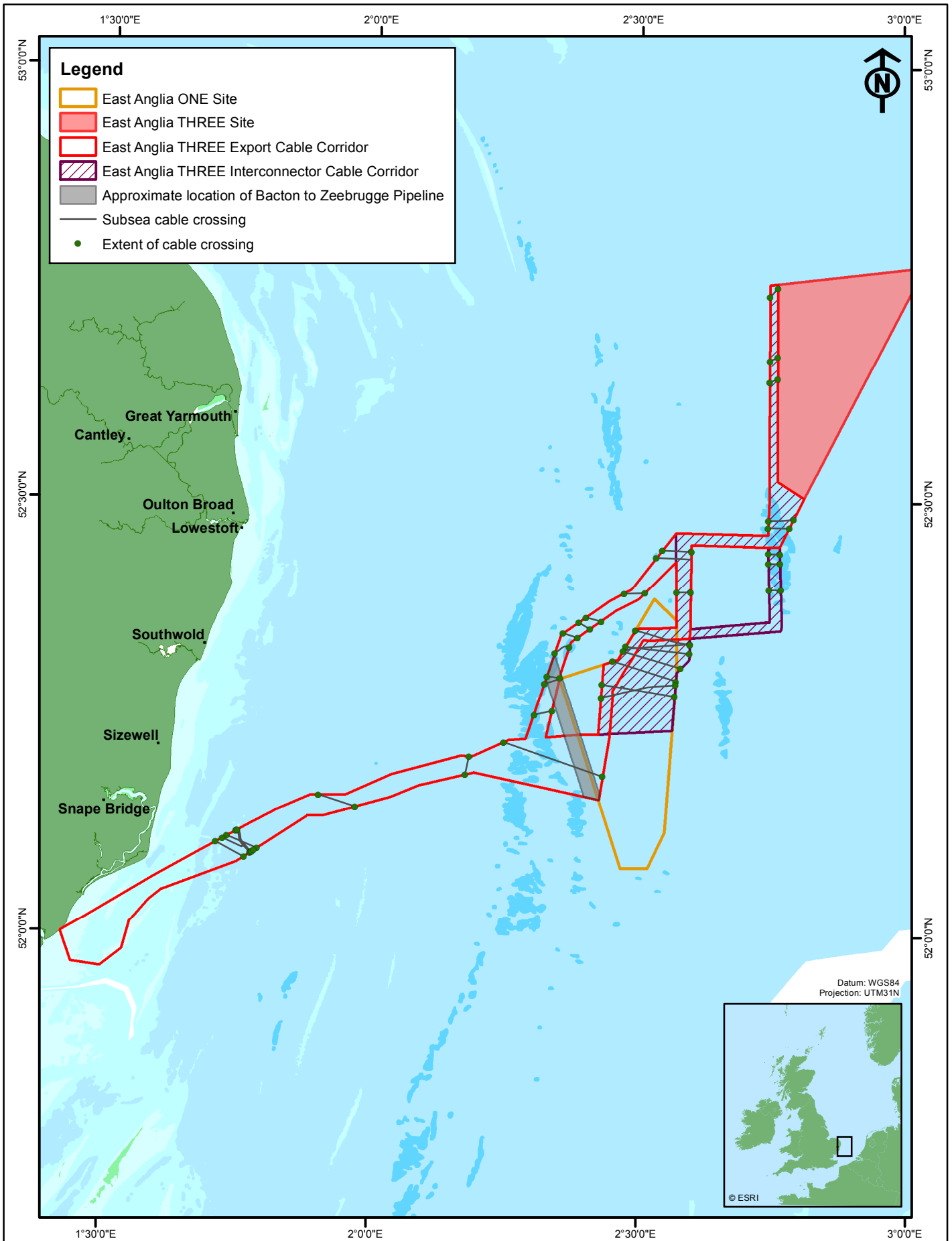
2	20/10/15	JE	Second issue
1	08/09/15	BN	First Issue.
Rev	Date	By	Comment

Original A4 Plot Scale 1:750,000

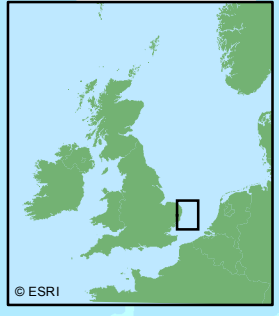
0 5 10 km
 0 2 4 6 nm

Volume 2		Figure 5.3	
Layout	Date	Rev	Dwg No.
N/A	10/10/2015	2	EA3-O-113

Ref:



Datum: WGS84
Projection: UTM31N



Contains Ordnance Survey data © Crown
Copyright and database right 2015.
© East Anglia Offshore Wind Limited 2015
Source: KisOrca 2015

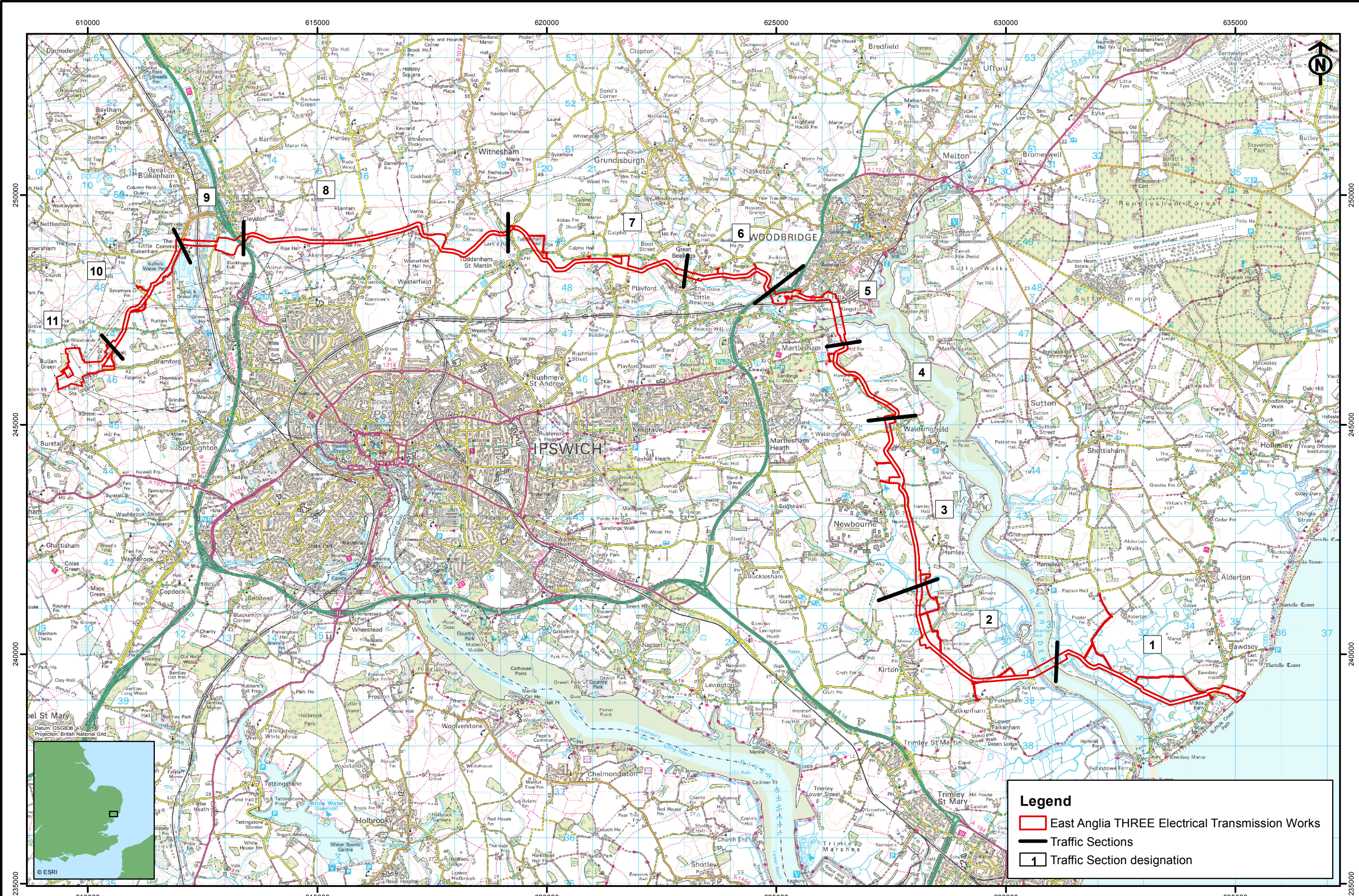
East Anglia THREE Limited
Locations of offshore cable crossings

2	20/10/15	JE	Second Issue.
1	27/08/15	BN	First Issue.
Rev	Date	By	Comment



Volume 2		Figure 5.4	
Layout	Date	Rev	Dwg No.
N/A	20/10/2015	2	EA3-O-131

Ref:



Legend

- East Anglia THREE Electrical Transmission Works
- Traffic Sections
- 1 Traffic Section designation

Rev	Date	By	Comment
2	20/10/15	JE	Second issue
1	08/09/15	BN	First issue

Original A3 Plot Scale 1:75,000

© Crown Copyright 2015. All rights reserved. Ordnance Survey Licence 0100031673.

East Anglia THREE Limited
Onshore Construction Sections

Drg No	EA3-L-114	Volume	2
Rev	1	Figure	5.5
Date	08/09/2015		
Layout	N/A		

This Page is Intentionally Blank

Chapter 5 Figures End Here