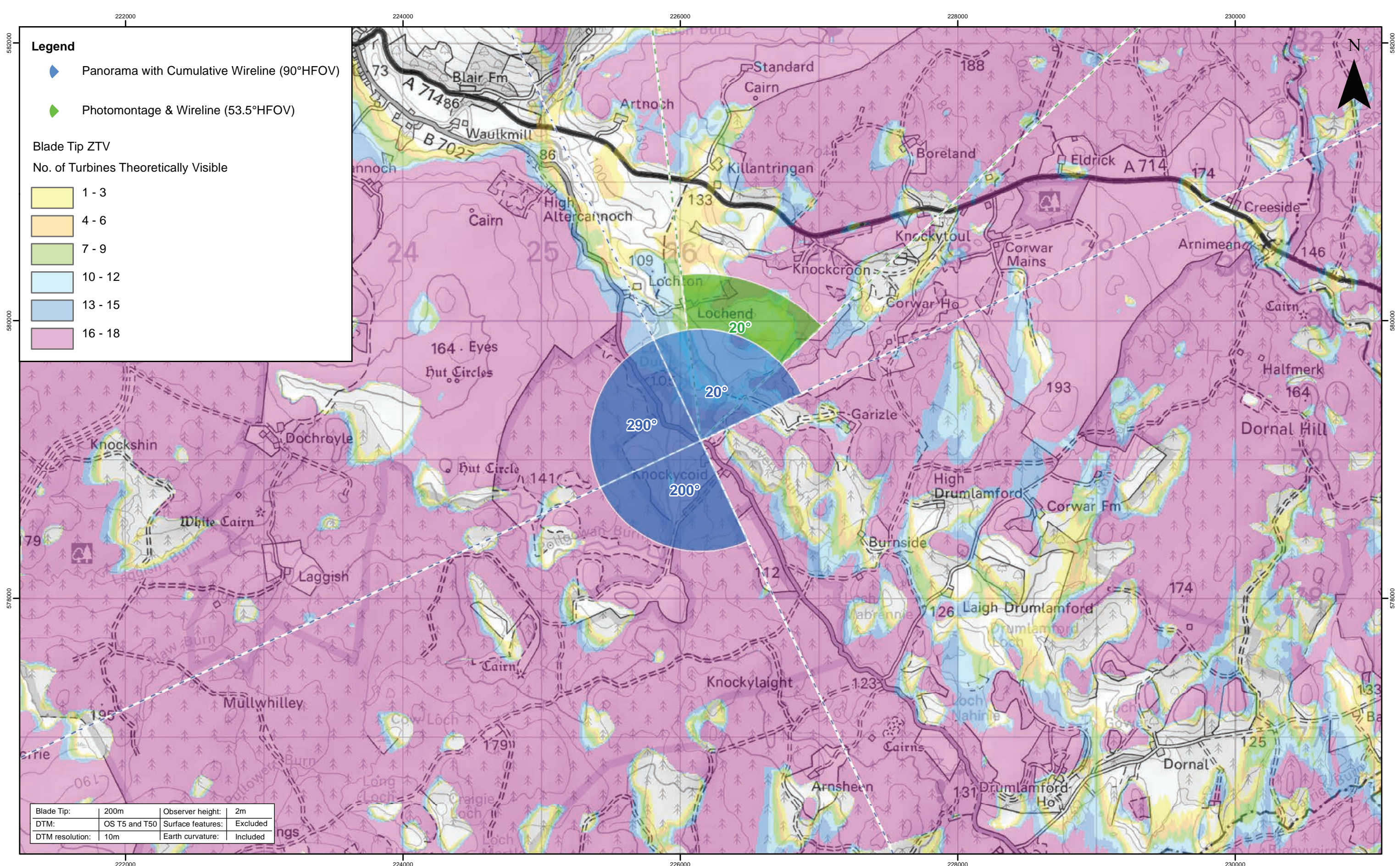


Note:  
1. Cumulative Windfarms: Full 60 km Search Area is not being shown on this figure. For full extent of 60 km Search Area and including Scoping sites see Figure 6.23.

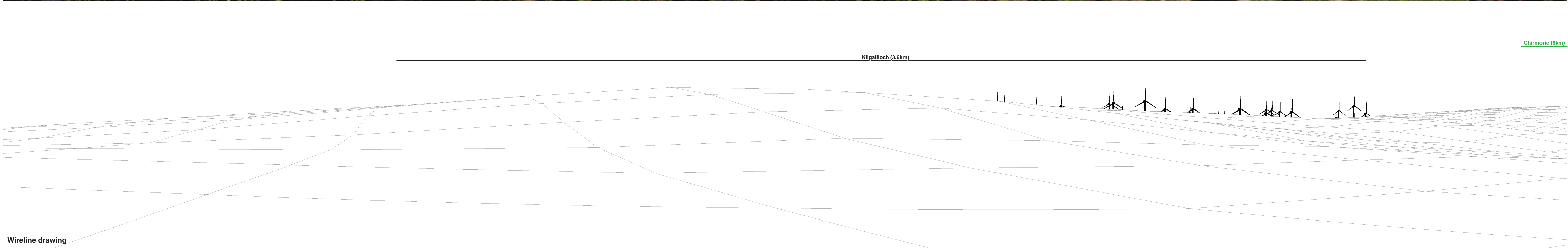


Rev	Date	By	Comment
B	10/12/19	JM	Second Issue.
A	11/11/19	JM	First Issue.

1:25,000  
Scale @ A3

© Crown Copyright 2019. All rights reserved.  
Ordnance Survey Licence 0100031673.  
Contains OS data © Crown copyright and database right (2019)

<b>Clauchrie Windfarm</b>		<b>Drg No</b>	EDI_1263_EIAR
EIA Report		<b>Rev</b>	B
Viewpoint 3: B7027 Knockycoid		<b>Date</b>	10/12/19
		<b>Figure</b>	6.29a
		<b>Datum:</b>	OSGB36
		<b>Projection:</b>	TM

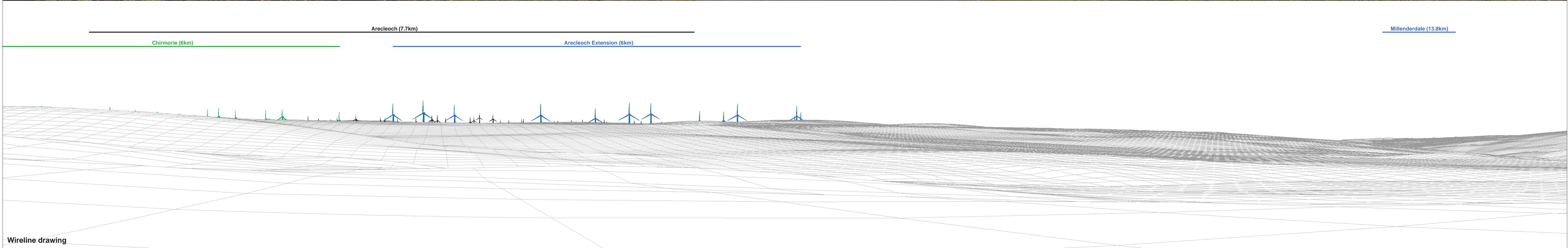


OS reference: 226146 E 579137 N  
 Eye level: 112.21 m AOD  
 Direction of view: 200°  
 Nearest turbine: 8.473 km

Horizontal field of view: 90° (cylindrical projection)  
 Principal distance: 522 mm

Camera: Canon EOS 5D Mark II  
 Lens: 50mm (Canon EF 50mm f/1.4)  
 Camera height: 1.5 m AGL  
 Date and time: 27/06/19, 16:29

Figure: 6.29b  
 Viewpoint 3: B7027 Knockycoid



OS reference: 226146 E 579137 N  
 Eye level: 112.21 m AOD  
 Direction of view: 290°  
 Nearest turbine: 8.473 km

Horizontal field of view: 90° (cylindrical projection)  
 Principal distance: 522 mm

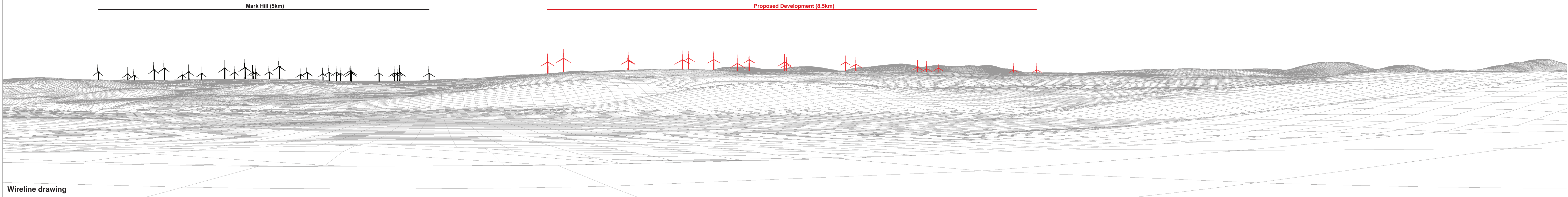
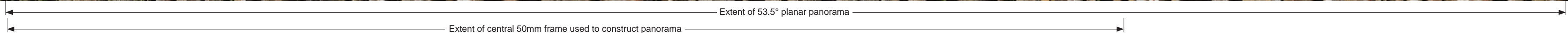
Camera: Canon EOS 5D Mark II  
 Lens: 50mm (Canon EF 50mm f/1.4)  
 Camera height: 1.5 m AGL  
 Date and time: 27/06/19, 16:29

Figure: 6.29c  
 Viewpoint 3: B7027 Knockycoid



Baseline photograph

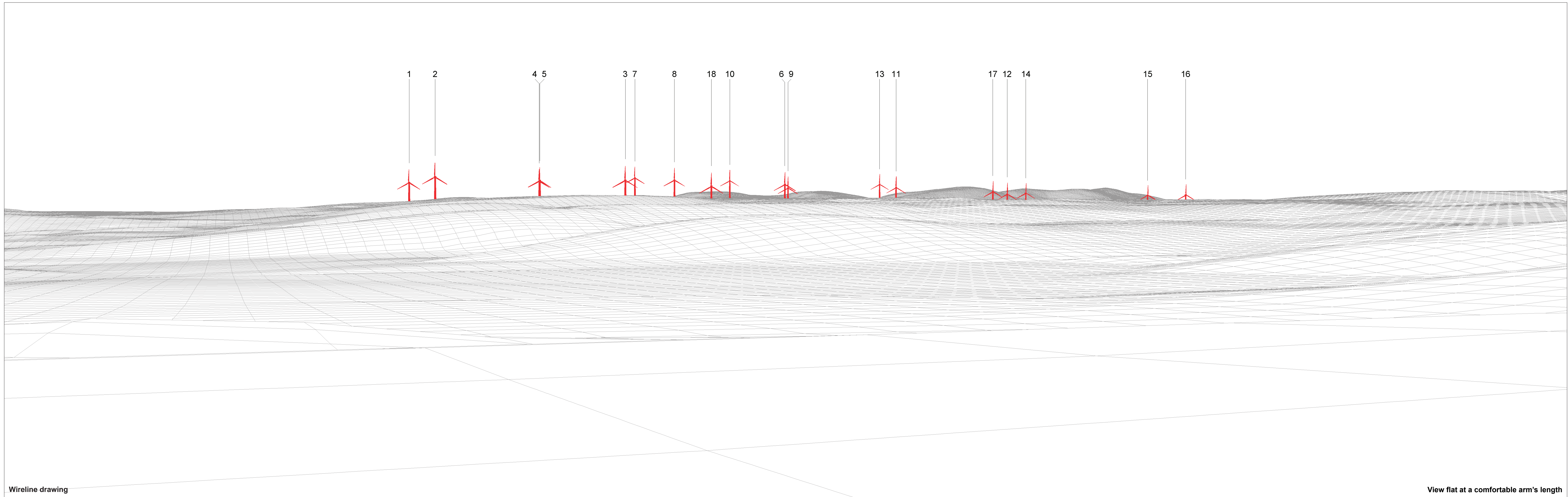
This image provides landscape and visual context only



Wireline drawing

<b>OS reference:</b> 226146 E 579137 N	<b>Horizontal field of view:</b> 90° (cylindrical projection)	<b>Camera:</b> Canon EOS 5D Mark II
<b>Eye level:</b> 112.21 m AOD	<b>Principal distance:</b> 522 mm	<b>Lens:</b> 50mm (Canon EF 50mm f/1.4)
<b>Direction of view:</b> 20°		<b>Camera height:</b> 1.5 m AGL
<b>Nearest turbine:</b> 8.473 km		<b>Date and time:</b> 27/06/19, 16:29

Figure: 6.29d  
Viewpoint 3: B7027 Knockycoid



Wireline drawing

View flat at a comfortable arm's length

OS reference: 226146 E 579137 N  
 Eye level: 112.21 m AOD  
 Direction of view: 20°  
 Nearest turbine: 8.473 km

Horizontal field of view: 53.5° (planar projection)  
 Principal distance: 812.5 mm  
 Paper size: 841 x 297 mm (half A1)  
 Correct printed image size: 820 x 260 mm

Camera: Canon EOS 5D Mark II  
 Lens: 50mm (Canon EF 50mm f/1.4)  
 Camera height: 1.5 m AGL  
 Date and time: 27/06/19, 16:29

Figure: 6.29e  
 Viewpoint 3: B7027 Knockycoid



Photomontage

View flat at a comfortable arm's length

<b>OS reference:</b> 226146 E 579137 N	<b>Horizontal field of view:</b> 53.5° (planar projection)	<b>Camera:</b> Canon EOS 5D Mark II
<b>Eye level:</b> 112.21 m AOD	<b>Principal distance:</b> 812.5 mm	<b>Lens:</b> 50mm (Canon EF 50mm f/1.4)
<b>Direction of view:</b> 20°	<b>Paper size:</b> 841 x 297 mm (half A1)	<b>Camera height:</b> 1.5 m AGL
<b>Nearest turbine:</b> 8.473 km	<b>Correct printed image size:</b> 820 x 260 mm	<b>Date and time:</b> 27/06/19, 16:29

**Figure: 6.29f**  
**Viewpoint 3: B7027 Knockycoid**