



**SCOTTISHPOWER
RENEWABLES**

East Anglia TWO Offshore Windfarm

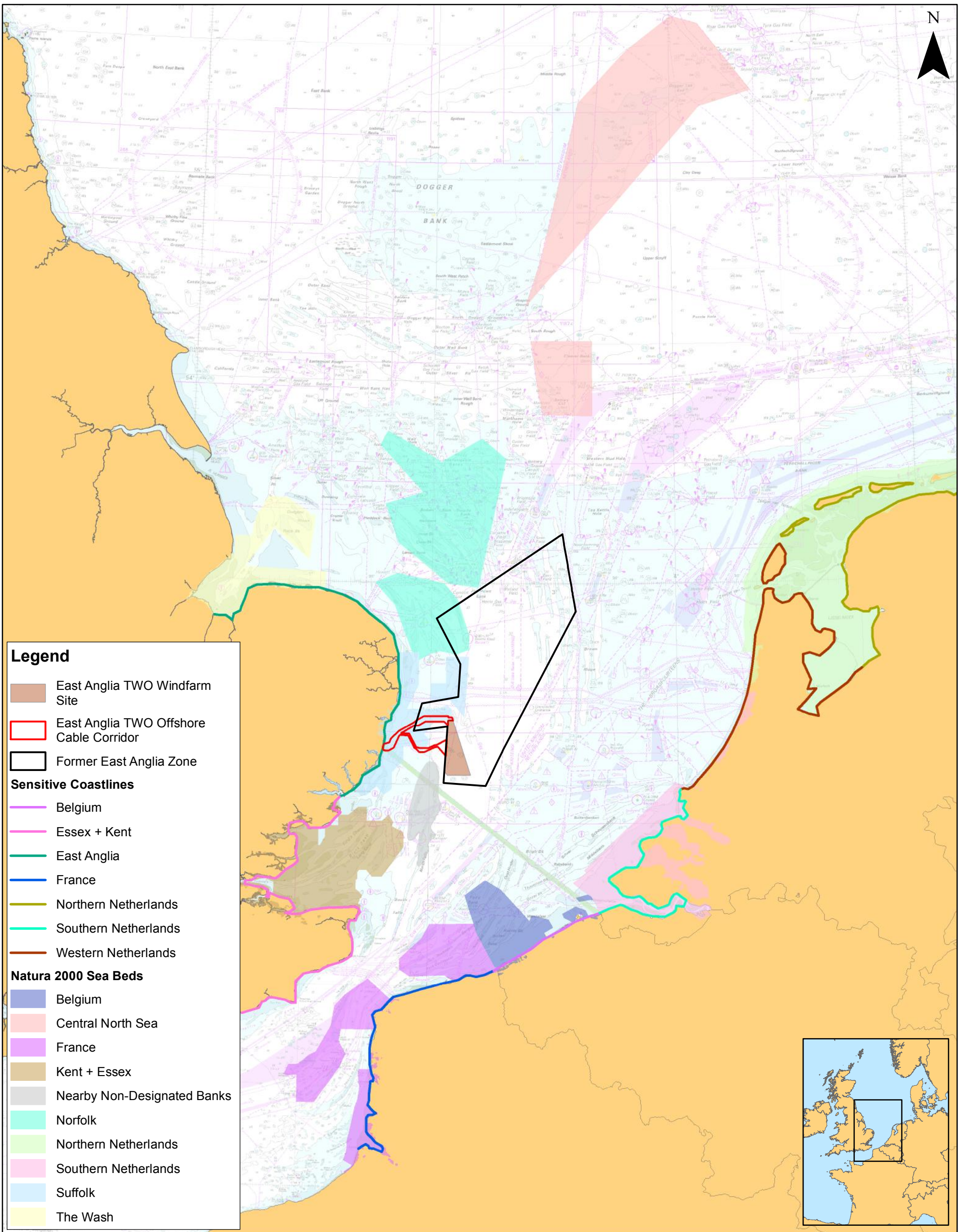
Chapter 7

**Marine Geology, Oceanography and
Physical Processes**

Figures

Preliminary Environmental Information
Volume 2

This page is intentionally blank



SCOTTISHPOWER RENEWABLES

Source: © European Union Natura, 2000. © Crown copyright. All rights reserved. 2008. © The Crown Estate, 2018. Charts from MarineFIND.co.uk Licence No EX001-0645-MF0095. Not to be used for navigation.

This map has been produced to the latest known information at the time of issue, and has been produced for your information only.

Please consult with the SPR Offshore GIS team to ensure the content is still current before using the information contained on this map.

To the fullest extent permitted by law, we accept no responsibility or liability (whether in contract, tort (including negligence) or otherwise in respect of any errors or omissions in the information contained in the map and shall not be liable for any loss, damage or expense caused by such errors or omissions.

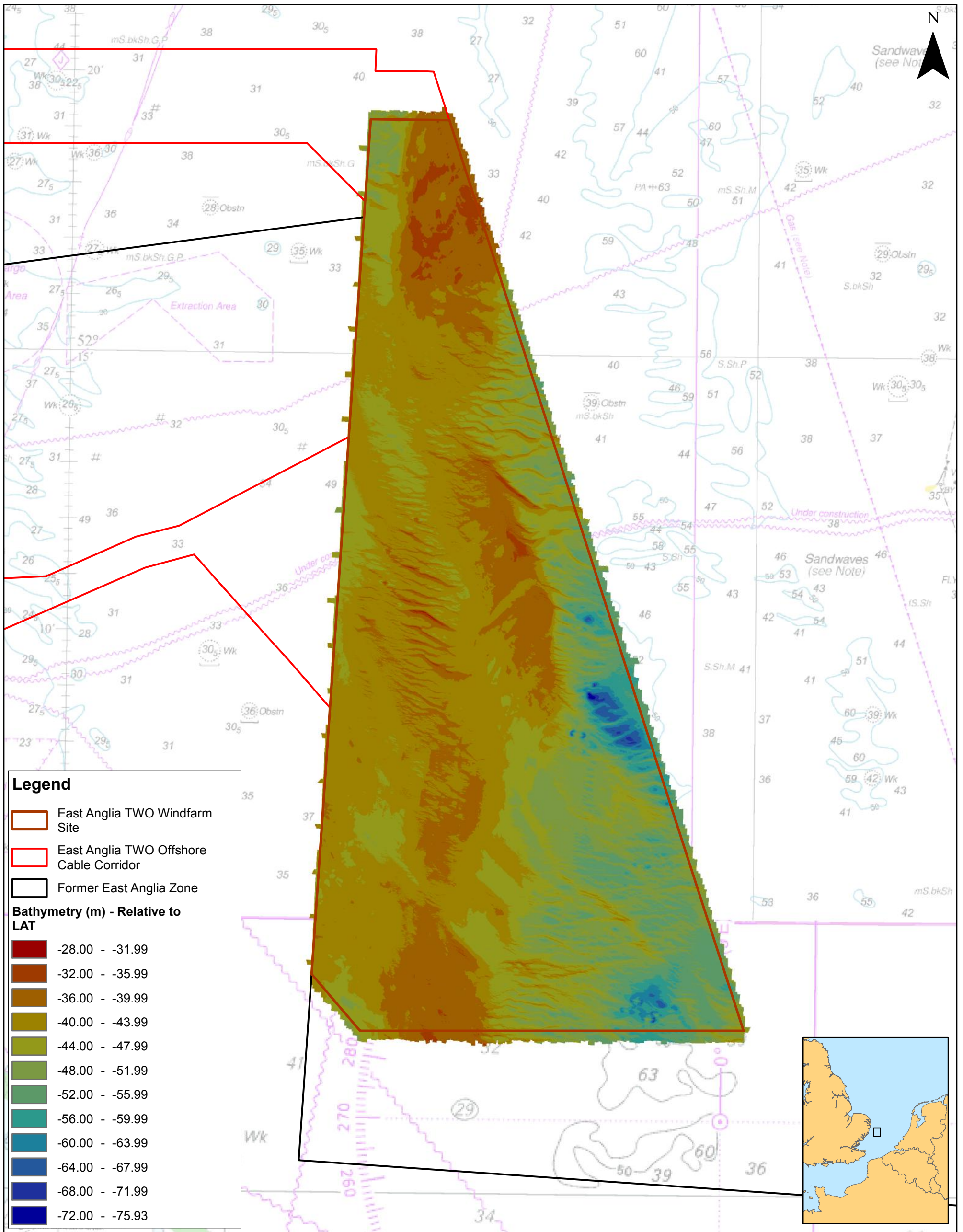
East Anglia TWO

Receptor Groups for Marine Geology, Oceanography and Physical Processes

| Rev | Date | By | Comment | Prepared: | Checked: | Approved: |
|-----|----------|----|---------------|-----------|----------|-----------|
| 2 | 07/11/18 | FC | Second Issue. | FC | | |
| 1 | 29/08/18 | FC | First Issue. | BK | | |

Scale @ A3: 1:2,000,000

| | | | |
|----------------------|-------------------------|---|---|
| Figure 7.1 | Date 07/11/18 | Dwg No. EA1N-EA2-DEV-DRG-IBR-00TBC184 | Datum: WGS 1984 Projection: Zone 31N |
|----------------------|-------------------------|---|---|



Legend

- East Anglia TWO Windfarm Site
- East Anglia TWO Offshore Cable Corridor
- Former East Anglia Zone

Bathymetry (m) - Relative to LAT

- 28.00 - -31.99
- 32.00 - -35.99
- 36.00 - -39.99
- 40.00 - -43.99
- 44.00 - -47.99
- 48.00 - -51.99
- 52.00 - -55.99
- 56.00 - -59.99
- 60.00 - -63.99
- 64.00 - -67.99
- 68.00 - -71.99
- 72.00 - -75.93

Source: © Crown copyright. All rights reserved. 2008. © The Crown Estate, 2016. Charts from MarineFIND.co.uk Licence No EK001-0645-MF0095. Not to be used for navigation.

This map has been produced to the latest known information at the time of issue, and has been produced for your information only.

Please consult with the SPR Offshore GIS team to ensure the content is still current before using the information contained on this map.

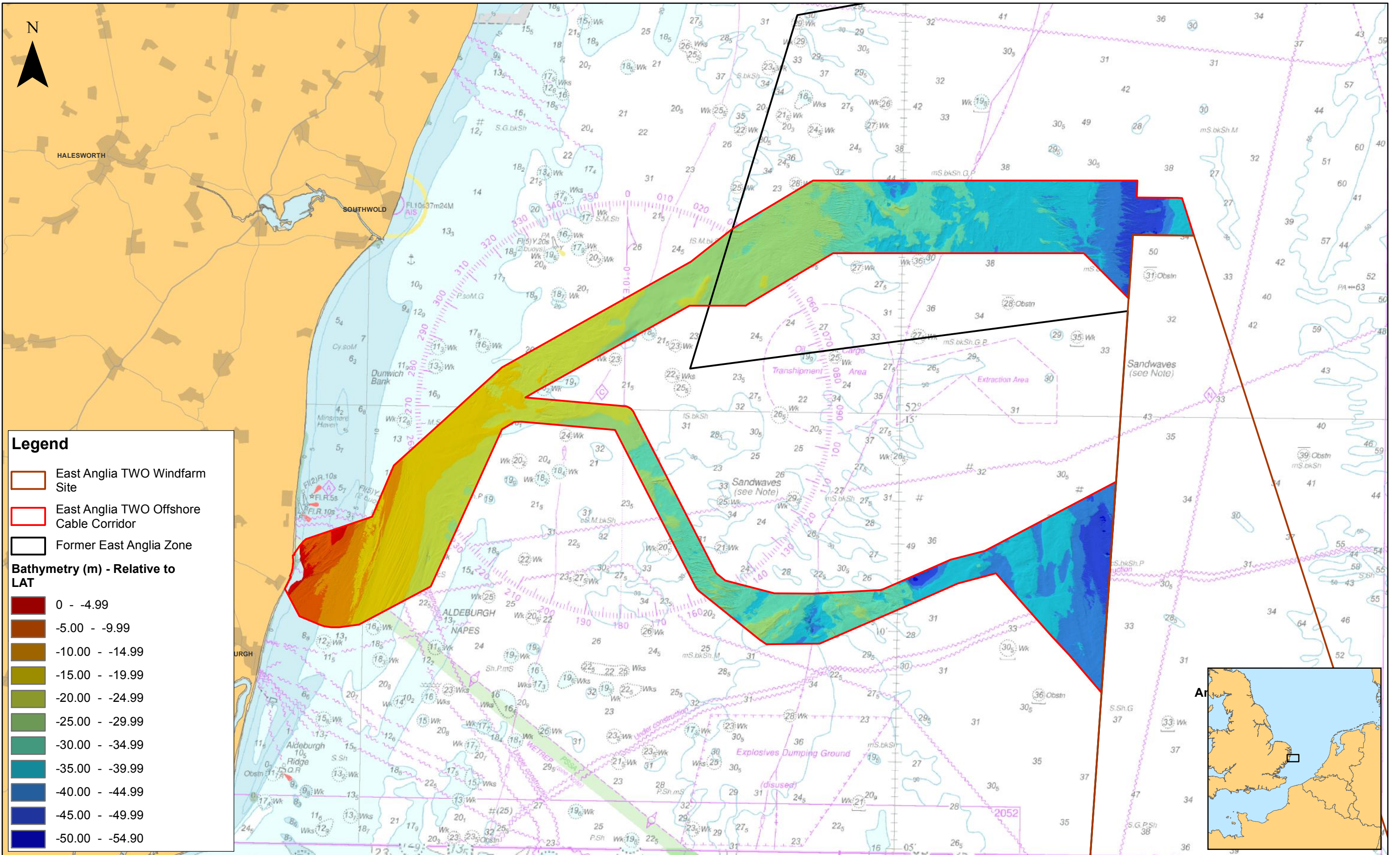
To the fullest extent permitted by law, we accept no responsibility or liability (whether in contract, tort (including negligence) or otherwise in respect of any errors or omissions in the information contained in the map and shall not be liable for any loss, damage or expense caused by such errors or omissions.

East Anglia TWO
 Bathymetry and Bedforms of the East Anglia TWO Windfarm Site

| | | | | | |
|------------|-------------|-----------|----------------|------------------|-----------|
| 2 | 07/11/18 | FC | Second Issue. | Prepared: | FC |
| 1 | 29/08/18 | FC | First Issue. | Checked: | BK |
| Rev | Date | By | Comment | Approved: | PP |

Scale @ A3: 1:120,000

| | | | |
|---------------|-------------|-------------------------------|---|
| Figure | Date | Dwg No. | Datum: WGS 1984 Projection: Zone 31N |
| 7.2 | 07/11/18 | EA1N-EA2-DEV-DRG-IBR-00TBC181 | |



| Rev | Date | By | Comment | Approved: |
|-----|------------|----|---------------|-----------|
| 2 | 07/11/2018 | FC | Second Issue. | FC |
| 1 | 29/08/2018 | FC | First Issue. | BK |

1:150,000
Scale @ A3

0 2 4 8 Km

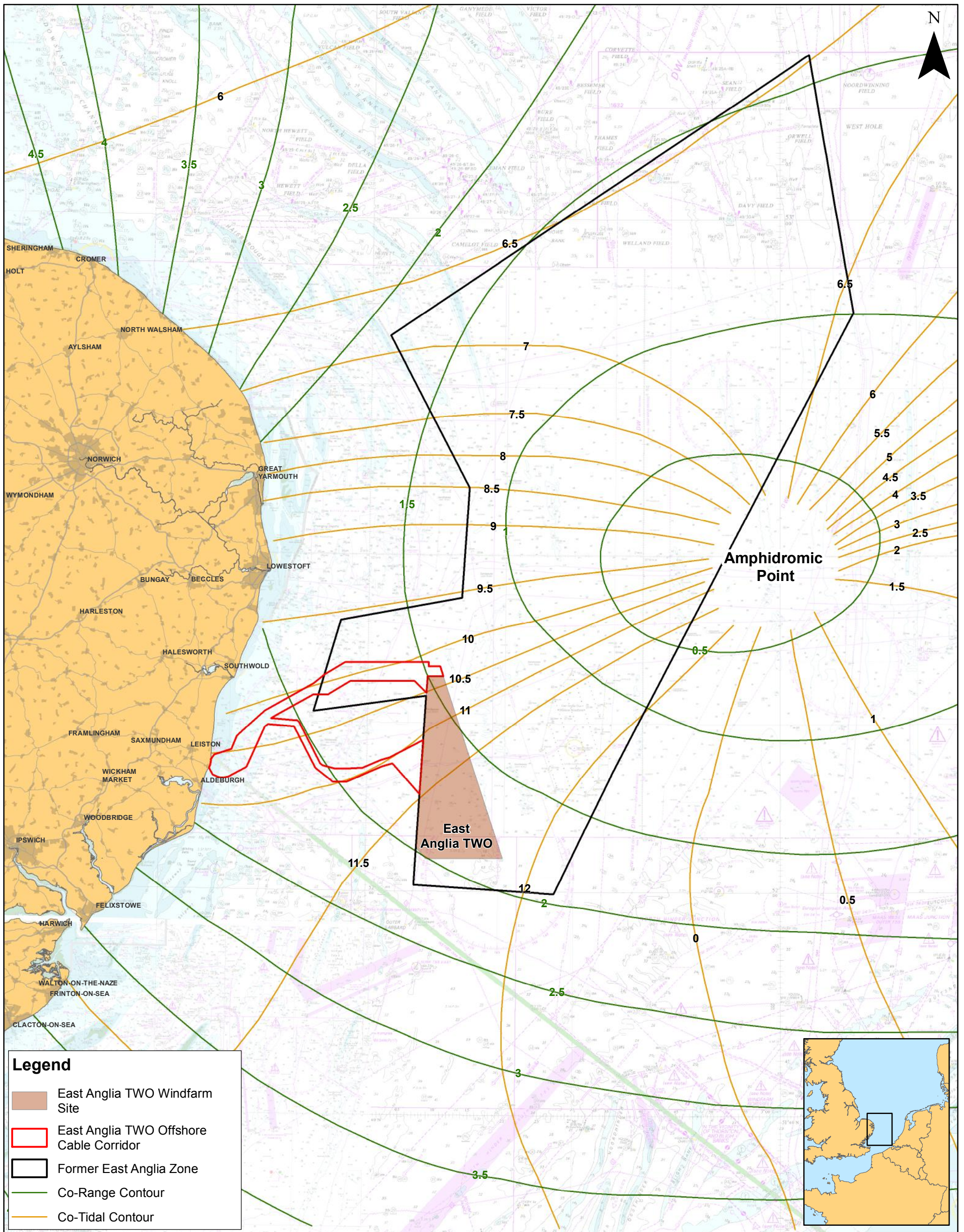
Source: © Bbby Offshore, 2018. © The Crown Estate, 2018. Charts from MarineFIND.co.uk Licence No EK001-0645-MF0095. Not to be used for navigation. This map has been produced to the latest known information at the time of issue, and has been produced for your information only. Please consult with the SPR Offshore GIS team to ensure the content is still current before using the information contained on this map. To the fullest extent permitted by law, we accept no responsibility or liability (whether in contract, tort (including negligence) or otherwise) in respect of any errors or omissions in the information contained in the map and shall not be liable for any loss, damage or expense caused by such errors or omissions.

East Anglia TWO

Bathymetry and Bedforms of the Offshore Cable Corridor

| | |
|---------------|-------------------------------|
| Drg No | EA1N-EA2-DEV-DRG-IBR-00TBC189 |
| Rev | 2 |
| Date | 07/11/18 |
| Figure | 7.3 |

Datum: WGS 1984
Projection: Zone 31N



Legend

- East Anglia T2O Windfarm Site
- East Anglia T2O Offshore Cable Corridor
- Former East Anglia Zone
- Co-Range Contour
- Co-Tidal Contour

Source: © The Crown Estate, 2018. Charts from MarineFIND.co.uk Licence No EK001-0645-MF0095. Not to be used for navigation.

This map has been produced to the latest known information at the time of issue, and has been produced for your information only.

Please consult with the SPR Offshore GIS team to ensure the content is still current before using the information contained on this map.

To the fullest extent permitted by law, we accept no responsibility or liability (whether in contract, tort (including negligence) or otherwise in respect of any errors or omissions in the information contained in the map and shall not be liable for any loss, damage or expense caused by such errors or omissions.

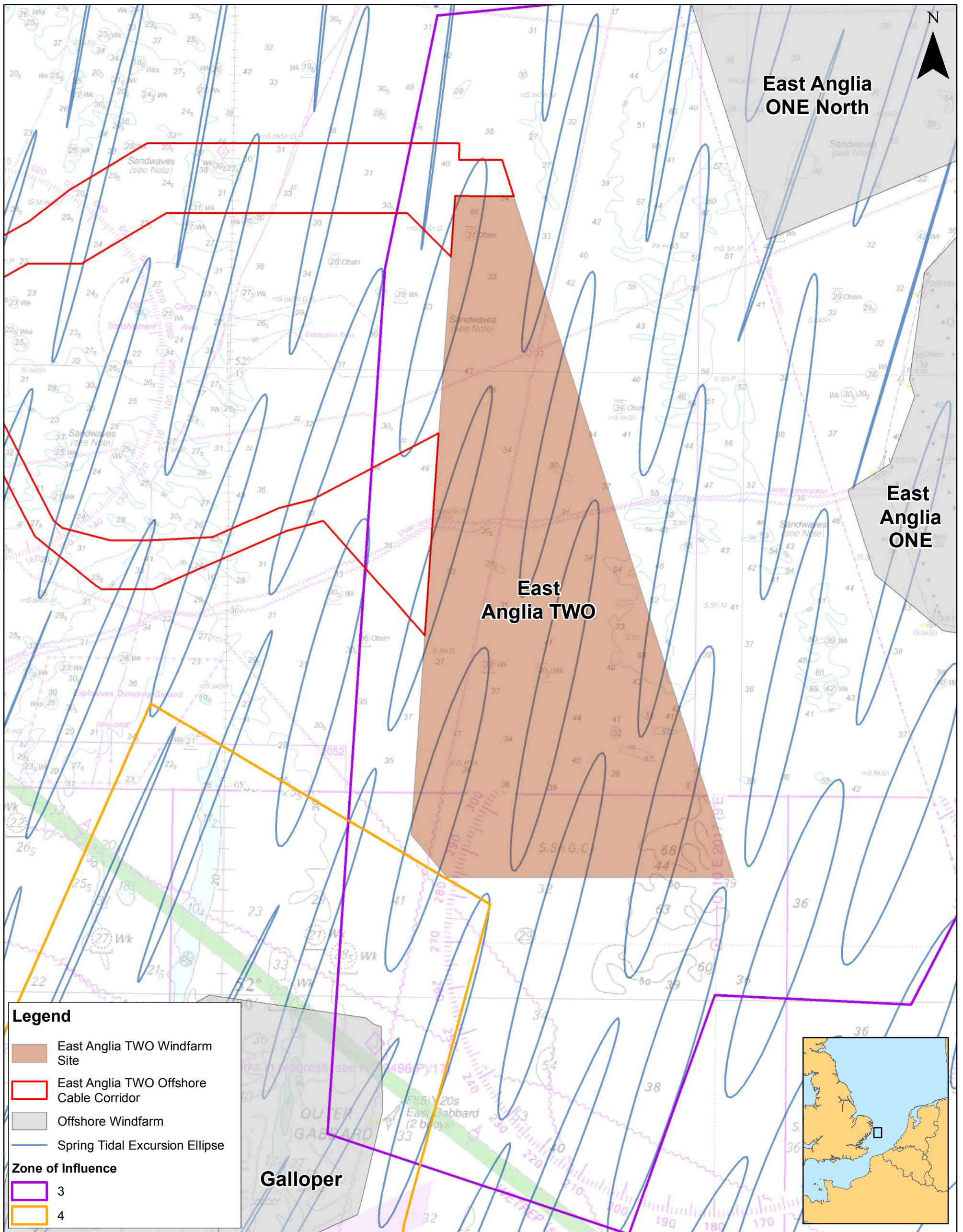
East Anglia T2O

Position of the Amphidromic Point

| Rev | Date | By | Comment | Prepared: | Checked: | Approved: |
|-----|----------|----|---------------|-----------|----------|-----------|
| 2 | 07/11/18 | FC | Second Issue. | FC | | |
| 1 | 29/08/18 | FC | First Issue. | | BK | |

Scale @ A3: 1:600,000

| | | | |
|----------------------|-------------------------|---|---|
| Figure 7.4 | Date 07/11/18 | Dwg No. EA1N-EA2-DEV-DRG-IBR-00TBC182 | Datum: WGS 1984 Projection: Zone 31N |
|----------------------|-------------------------|---|---|



Legend

- East Anglia TWO Windfarm Site
- East Anglia TWO Offshore Cable Corridor
- Offshore Windfarm
- Spring Tidal Excursion Ellipse

Zone of Influence

- 3
- 4

Source: © Crown copyright. All rights reserved. 2008. © The Crown Estate, 2016. Charts from MarineFIND.co.uk Licence No EK001-0645-MF0065. Not to be used for navigation.

This map has been produced to the latest known information at the time of issue, and has been produced for your information only.

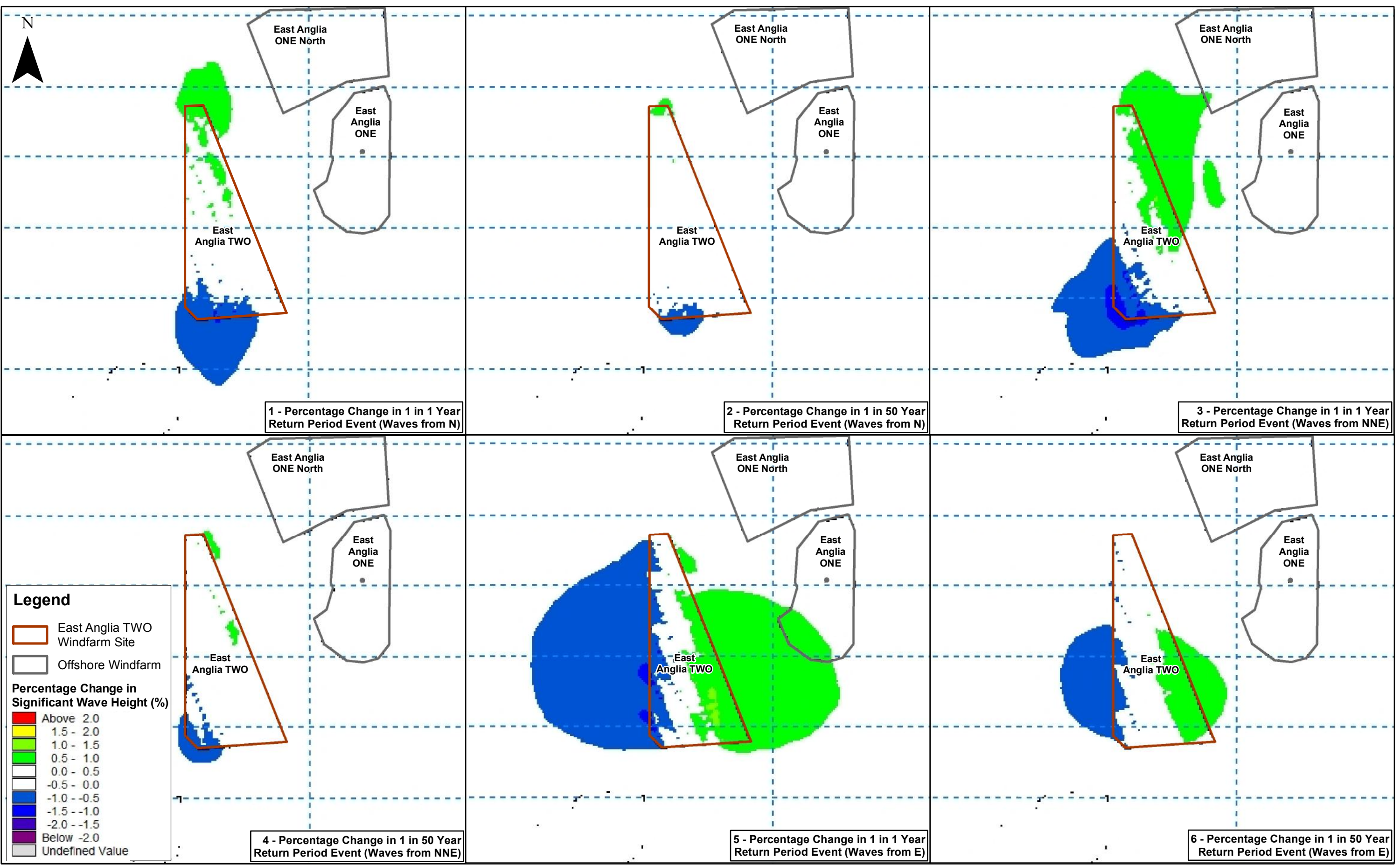
Please consult with the SPR Offshore GIS team to ensure the content is still current before using the information contained on this map.

To the fullest extent permitted by law, we accept no responsibility or liability (whether in contract, tort (including negligence) or otherwise in respect of any errors or omissions in the information contained in the map and shall not be liable for any loss, damage or expense caused by such errors or omissions.

East Anglia TWO

Zone of Potential Influence on the Tidal Regime

| | | | | | | | | | |
|------------|-------------|-----------|----------------|-----------|----|-----------------------|-------------|-------------------------------|---|
| | | | | | | | | | |
| 2 | 07/11/18 | FC | Second Issue. | Prepared: | FC | Scale @ A3: 1:160,500 | | | |
| 1 | 29/08/18 | FC | First Issue. | Checked: | BK | Figure | Date | Dwg No. | Datum: WGS 1984 Projection: Zone 31N |
| Rev | Date | By | Comment | Approved: | PP | 7.5 | 07/11/18 | EA1N-EA2-DEV-DRG-IBR-00TBC187 | |



| Rev | Date | By | Comment | Approved: |
|-----|------------|----|---------------|--------------|
| 2 | 07/11/2018 | FC | Second Issue. | Prepared: FC |
| 1 | 29/08/2018 | FC | First Issue. | Checked: BK |
| | | | | Approved: PP |

1:500,000
Scale @ A3

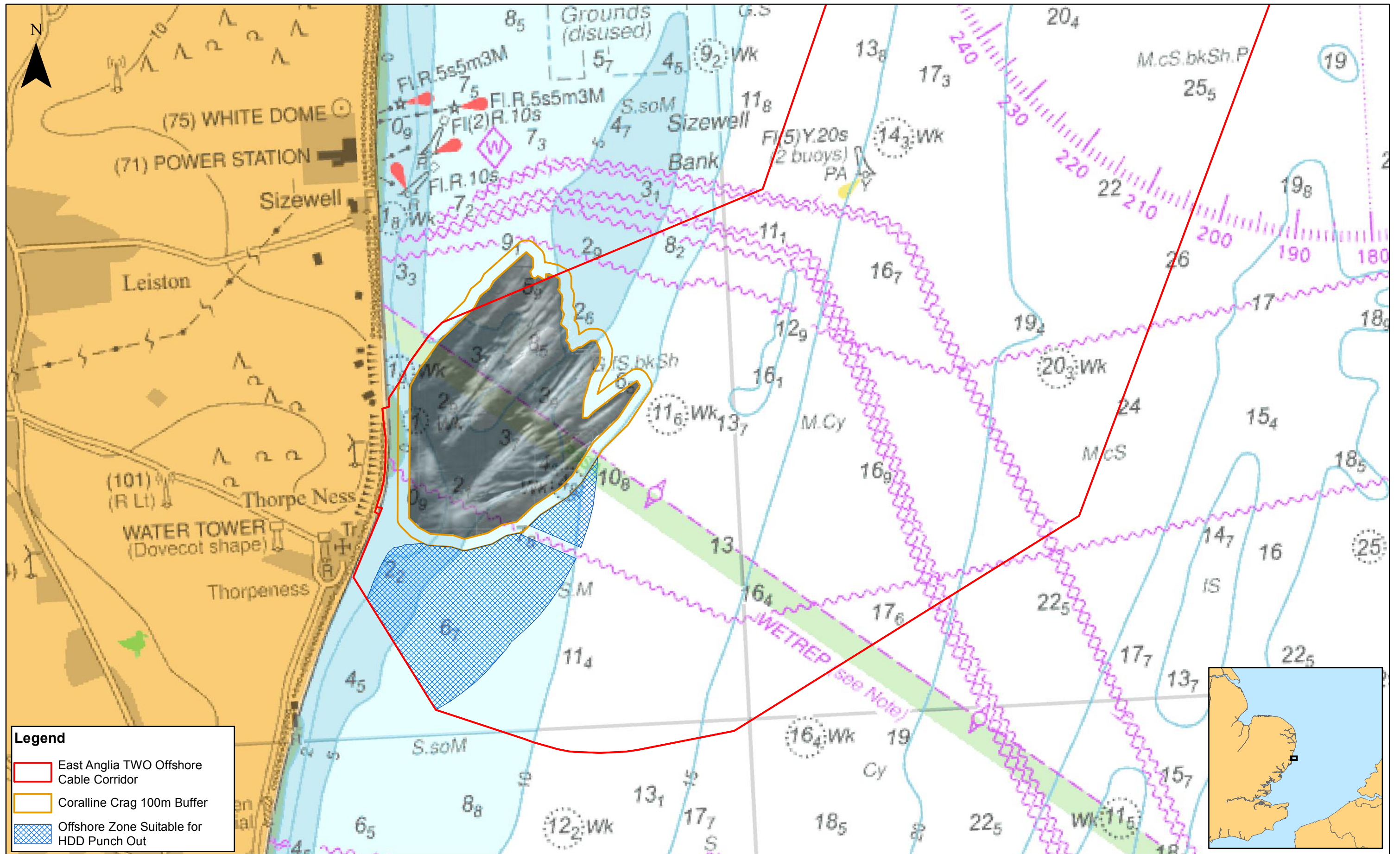
0 5 10 20 Km

Source: © The Crown Estate, 2018. Charts from MarineFIND.co.uk Licence No EK001-0645-MF0095. Not to be used for navigation.
This map has been produced to the latest known information at the time of issue, and has been produced for your information only.
Please consult with the SPR Offshore GIS team to ensure the content is still current before using the information contained on this map.
To the fullest extent permitted by law, we accept no responsibility or liability (whether in contract, tort (including negligence) or otherwise in respect of any errors or omissions in the information contained in the map and shall not be liable for any loss, damage or expense caused by such errors or omissions.




East Anglia TWO

Zone of Potential Influence on the Wave Regime

| | |
|--------------------|-------------------------------|
| Drg No | EA1N-EA2-DEV-DRG-IBR-00TBC185 |
| Rev | 2 |
| Date | 07/11/18 |
| Figure | 7.6 |
| Coordinate System: | BNG |
| Datum: | OSGB36 |



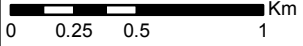
Legend

-  East Anglia TWO Offshore Cable Corridor
-  Coralline Crag 100m Buffer
-  Offshore Zone Suitable for HDD Punch Out



| Rev | Date | By | Comment | Approved: |
|-----|------------|----|---------------|--------------|
| 2 | 07/11/2018 | FC | Second Issue. | Prepared: FC |
| 1 | 13/09/2018 | FC | First Issue. | Checked: BK |

1:30,000
Scale @ A3

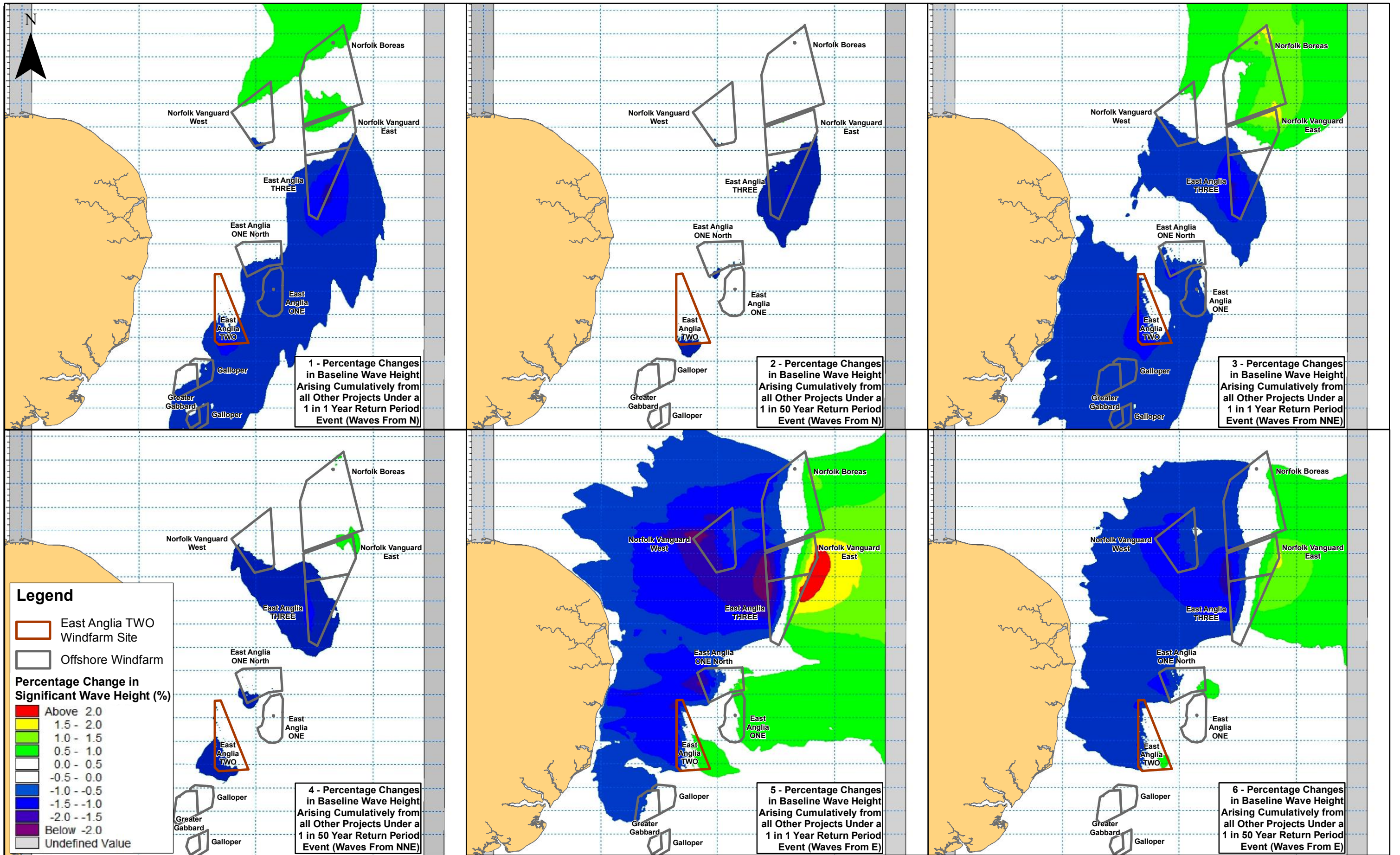


Source: © The Crown Estate, 2018. Contains MarineFIND data. Charts from MarineFIND.co.uk Licence No EK001-0645-MF0095. Not to be used for navigation.
This map has been produced to the latest known information at the time of issue, and has been produced for your information only. Please consult with the SPR Offshore GIS team to ensure the content is still current before using the information contained on this map. To the fullest extent permitted by law, we accept no responsibility or liability (whether in contract, tort (including negligence) or otherwise in respect of any errors or omissions in the information contained in the map and shall not be liable for any loss, damage or expense caused by such errors or omissions.

East Anglia TWO

Offshore Cable Corridor and Landfall

| | | |
|---------------|-------------------------------|----------------------|
| Drg No | EA1N-EA2-DEV-DRG-IBR-00TBC292 | |
| Rev | 2 | Datum: WGS 1984 |
| Date | 07/11/18 | Projection: Zone 31N |
| Figure | 7.7 | |



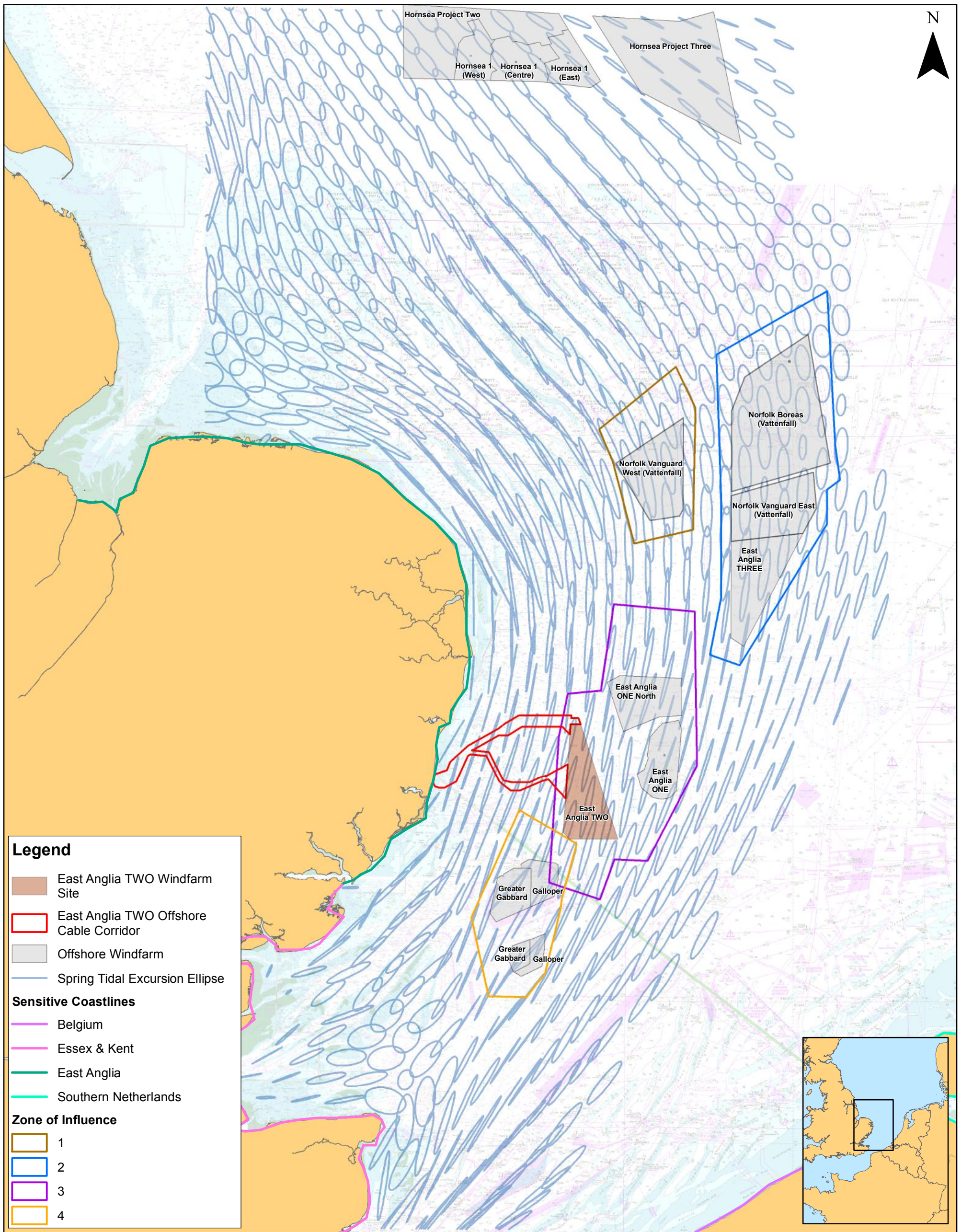
| Rev | Date | By | Comment | Approved: |
|-----|------------|----|---------------|-----------|
| 2 | 07/11/2018 | FC | Second Issue. | FC |
| 1 | 29/08/2018 | FC | First Issue. | BK |

| | | | | | |
|---|------------|----------|----|-----------|----|
| 1:1,500,000 | Scale @ A3 | | | | |
| 0 | 2.5 | 5 | 10 | Km | |
| <small>Source: © The Crown Estate, 2018. Charts from MarineFIND.co.uk Licence No EK001-0645-MF0095. Not to be used for navigation. This map has been produced to the latest known information at the time of issue, and has been produced for your information only. Please consult with the SPR Offshore GIS team to ensure the content is still current before using the information contained on this map. To the fullest extent permitted by law, we accept no responsibility or liability (whether in contract, tort (including negligence) or otherwise in respect of any errors or omissions in the information contained in the map and shall not be liable for any loss, damage or expense caused by such errors or omissions.</small> | | | | | |
| Prepared: | FC | Checked: | BK | Approved: | PP |

East Anglia TWO


Zone of Potential Cumulative Influence on the Wave Regime

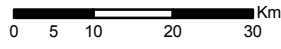
| | | |
|--------|-------------------------------|------------------------|
| Drg No | EA1N-EA2-DEV-DRG-IBR-00TBC186 | |
| Rev | 2 | Coordinate System: BNG |
| Date | 07/11/18 | Datum: OSGB36 |
| Figure | 7.8 | |



Legend

- East Anglia TWO Windfarm Site
- East Anglia TWO Offshore Cable Corridor
- Offshore Windfarm
- Spring Tidal Excursion Ellipse
- Sensitive Coastlines**
- Belgium
- Essex & Kent
- East Anglia
- Southern Netherlands
- Zone of Influence**
- 1
- 2
- 3
- 4

| | | |
|---|--|--|
|  | <p>Source: © Crown copyright. All rights reserved. 2008. © The Crown Estate, 2016. Charts from MarineFIND.co.uk Licence No EK001-0645-MF0095. Not to be used for navigation.</p> <p>This map has been produced to the latest known information at the time of issue, and has been produced for your information only.</p> <p>Please consult with the SPR Offshore GIS team to ensure the content is still current before using the information contained on this map.</p> <p>To the fullest extent permitted by law, we accept no responsibility or liability (whether in contract, tort (including negligence) or otherwise in respect of any errors or omissions in the information contained in the map and shall not be liable for any loss, damage or expense caused by such errors or omissions.</p> | <h2 style="margin: 0;">East Anglia TWO</h2> <h3 style="margin: 0;">Zone of Potential Cumulative Influence on the Tidal Regime</h3> |
|---|--|--|

| | | | | | | | | |
|------------|-------------|-----------|----------------|-----------|----|-----------------------|-------------|---|
| | | | | | | | | |
| 2 | 07/11/18 | FC | Second Issue. | Prepared: | FC | Scale @ A3: 1:950,000 | |  |
| 1 | 29/08/18 | FC | First Issue. | Checked: | BK | Figure | Date | |
| Rev | Date | By | Comment | Approved: | PP | 7.9 | 07/11/18 | EA1N-EA2-DEV-DRG-IBR-00TBC188 |
| | | | | | | Datum: WGS 1984 | | Projection: Zone 31N |

This page is intentionally blank