



**SCOTTISHPOWER  
RENEWABLES**

# **East Anglia TWO Offshore Windfarm**

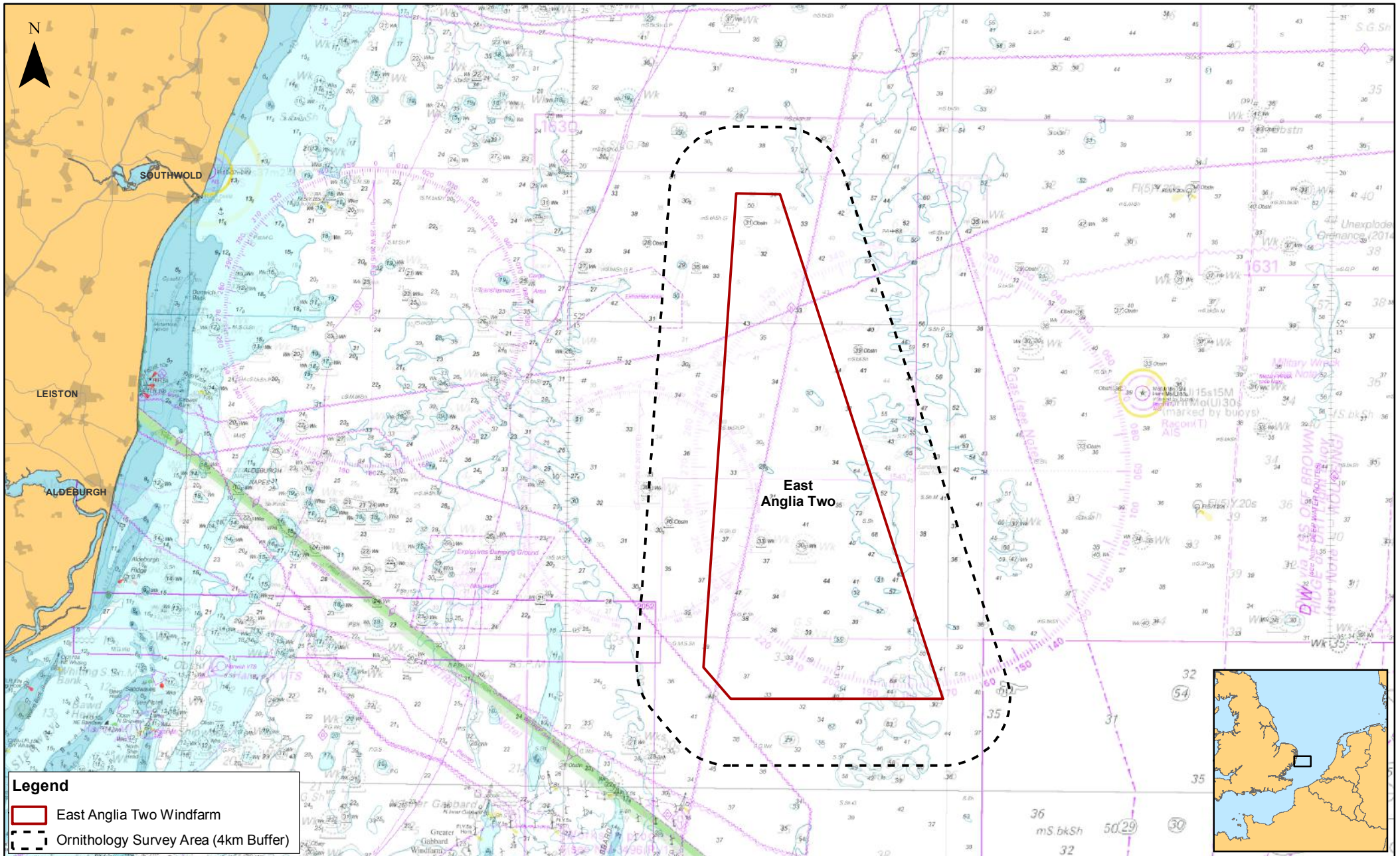
## **Chapter 12**

**Ornithology**

**Figures**

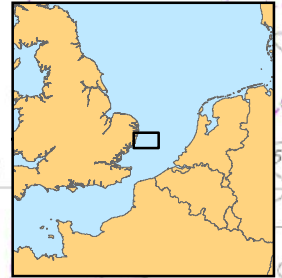
**Preliminary Environmental Information  
Volume 2**

**This page is intentionally blank**



**Legend**

- East Anglia Two Windfarm
- Ornithology Survey Area (4km Buffer)



Rev	Date	By	Comment
1	24/08/2018	AB	First Issue.

Scale @ A3: 1:300,000

0 3 6 12 Km

Prepared: AB  
Checked: BH  
Approved: PP

Source: © The Crown Estate, 2018. Charts from MarinePro.co.uk © License No E0001-0645-8P0095. Not to be used for navigation. This map has been produced to the latest known information at the time of issue, and has been produced for your information only. Please consult with the SPR Office GIS team to ensure the content is still current before using the information contained on this map. No liability is accepted for any errors or omissions in the map and shall not be liable for any loss, damage or expense caused by such errors or omissions.

## East Anglia TWO

### Ornithology Survey Area

Drg No	EA1N-EA2-DEV-DERG-BR-01BTC176	
Rev	1	Datum: WGS 1984
Date	24/08/18	Projection: Zone 31N
Figure	12.1	

**This page is intentionally blank**