



**SCOTTISHPOWER
RENEWABLES**

East Anglia TWO Offshore Windfarm

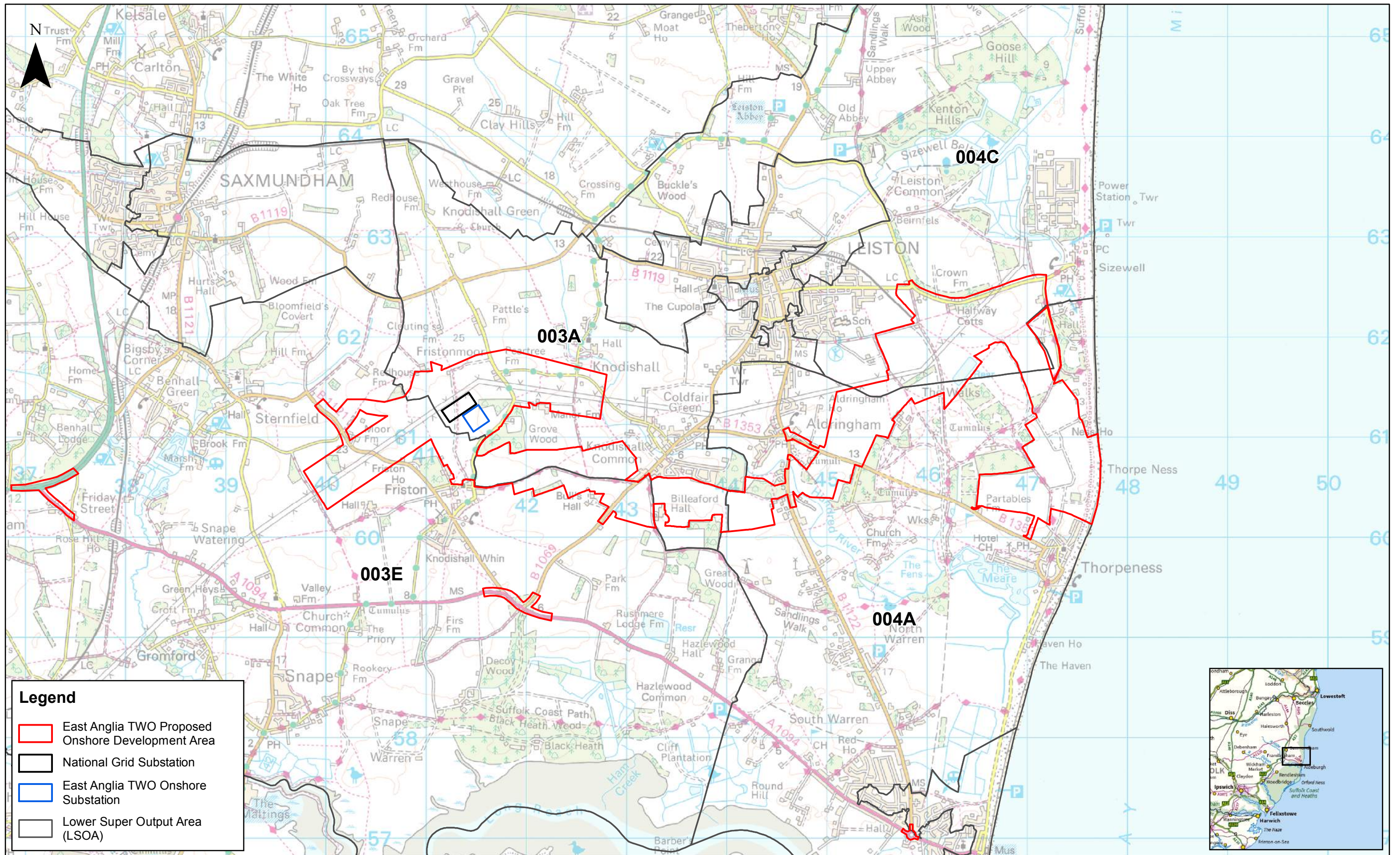
Chapter 27

Human Health

Figures

**Preliminary Environmental Information
Volume 2**

This page is intentionally blank



Legend

- East Anglia T2O Proposed Onshore Development Area
- National Grid Substation
- East Anglia T2O Onshore Substation
- Lower Super Output Area (LSOA)



Rev	Date	By	Comment	Approved:
2	13/11/2018	FC	Second Issue.	Prepared: FC
1	20/09/2018	FC	First Issue.	Checked: DS
				Approved: AH

1:35,000
Scale @ A3

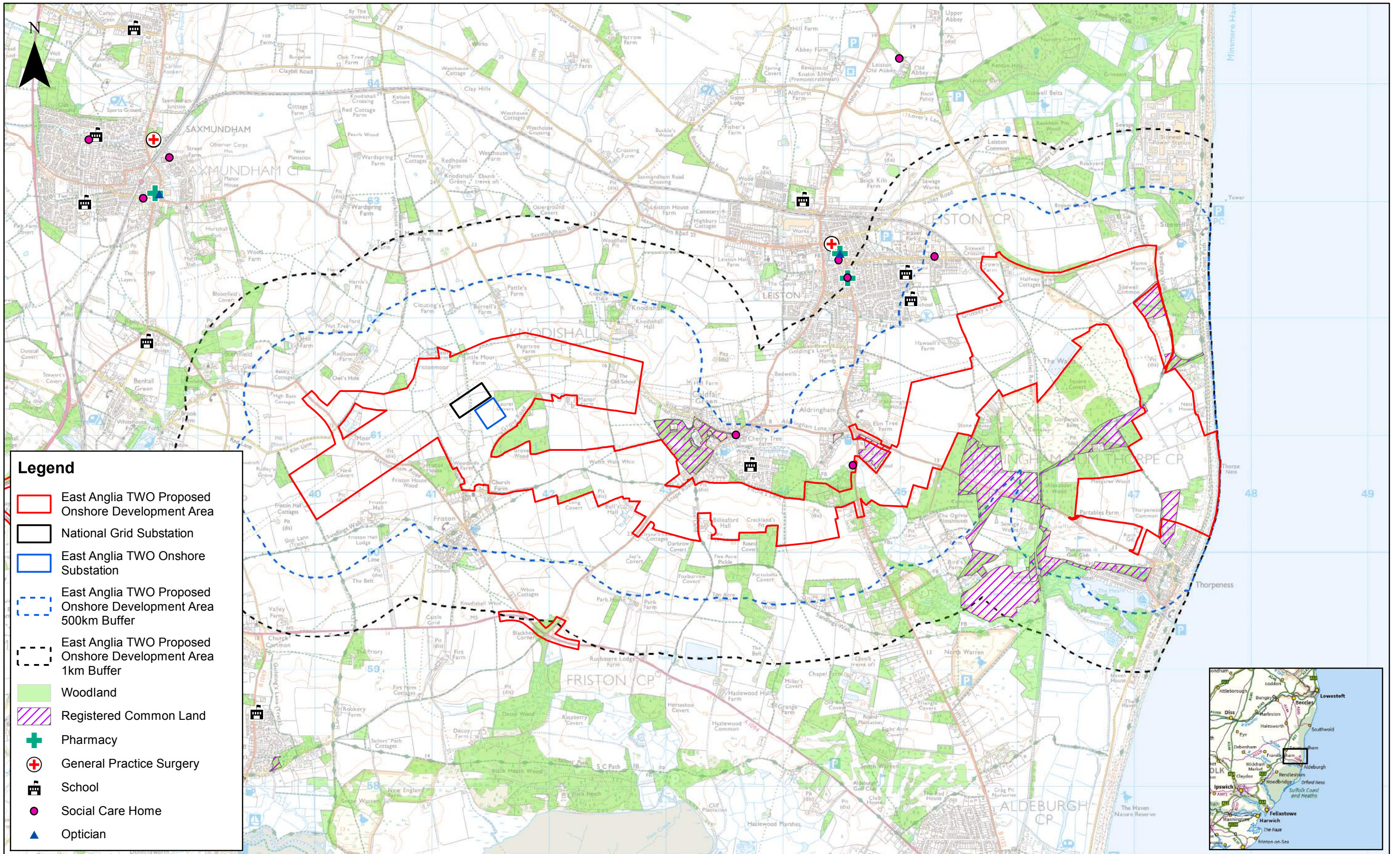
0 1 2 Km

This map has been produced to the latest known information at the time of issue, and has been produced for your information only. Please consult with the SPR Offshore GIS team to ensure the content is still current before using the information contained on this map. To the fullest extent permitted by law, we accept no responsibility or liability (whether in contract, tort (including negligence) or otherwise) in respect of any errors or omissions in the information contained in the map and shall not be liable for any loss, damage or expense caused by such errors or omissions.

East Anglia T2O

Site Specific Population Groups

Drg No	EA1N-EA2-DEV-DRG-IBR-00TBC78	
Rev	2	Coordinate System: BNG
Date	13/11/18	Datum: OSGB36
Figure	27.1	



Legend

- East Anglia T2O Proposed Onshore Development Area
- National Grid Substation
- East Anglia T2O Onshore Substation
- East Anglia T2O Proposed Onshore Development Area 500km Buffer
- East Anglia T2O Proposed Onshore Development Area 1km Buffer
- Woodland
- Registered Common Land
- + Pharmacy
- + General Practice Surgery
- 🏫 School
- Social Care Home
- ▲ Optician

				1:30,000	
				Scale @ A3	
2	13/11/2018	FC	Second Issue.	Prepared:	FC
1	20/09/2018	FC	First Issue.	Checked:	DS
Rev	Date	By	Comment	Approved:	AH

Source: © Natural England, 2018. © Yell Limited, 2018. © 2018 Google. © Crown copyright and database rights 2018. Ordnance Survey 0100031673.
 This map has been produced to the latest known information at the time of issue, and has been produced for your information only.
 Please consult with the SPR Offshore GIS team to ensure the content is still current before using the information contained on this map.
 To the fullest extent permitted by law, we accept no responsibility or liability (whether in contract, tort (including negligence) or otherwise in respect of any errors or omissions in the information contained in the map and shall not be liable for any loss, damage or expense caused by such errors or omissions.

East Anglia T2O

Location of Health and Community Assets

Drg No	EA1N-EA2-DEV-DRG-IBR-00TBC79	
Rev	2	Coordinate System: BNG Datum: OSG36
Date	13/11/18	
Figure	27.2	