

Legend

- Site Boundary
- 50km SLVIA Study Area
- East Anglia T2O 300m Wind Turbine
- Indicative Accommodation Platform
- Indicative Offshore Substation Platform (OSS)
- ▲ Indicative Operational Meteorological Mast (OMM)
- Operational / Under Construction Windfarms

Seascape Character Types
 Source: Suffolk, South Norfolk & North Essex Seascape Character Assessment, April 2018

- 1 - Inland Navigable Waters
- 2 - International Ports and Approaches
- 3 - Nearshore Waters
- 4 - Developed Nearshore Waters
- 5 - Coastal Waters
- 6 - Offshore Waters

No. of Blade Tips Visible

1 - 10	21 - 30	41 - 50
11 - 20	31 - 40	51 - 60

Blade Tip:	300m	Observer height:	2m
DTM:	OS T5	Surface features:	Excluded
DTM resolution:	10m	Earth curvature:	Included

	4	16/01/2019	TH	Document Reference Update		
	3	20/12/2018	TH	Update Layout	Prepared:	TH
	2	31/10/2018	LA	Edits to legend	Checked:	SM
	Rev	Date	By	Comment	Approved:	LT

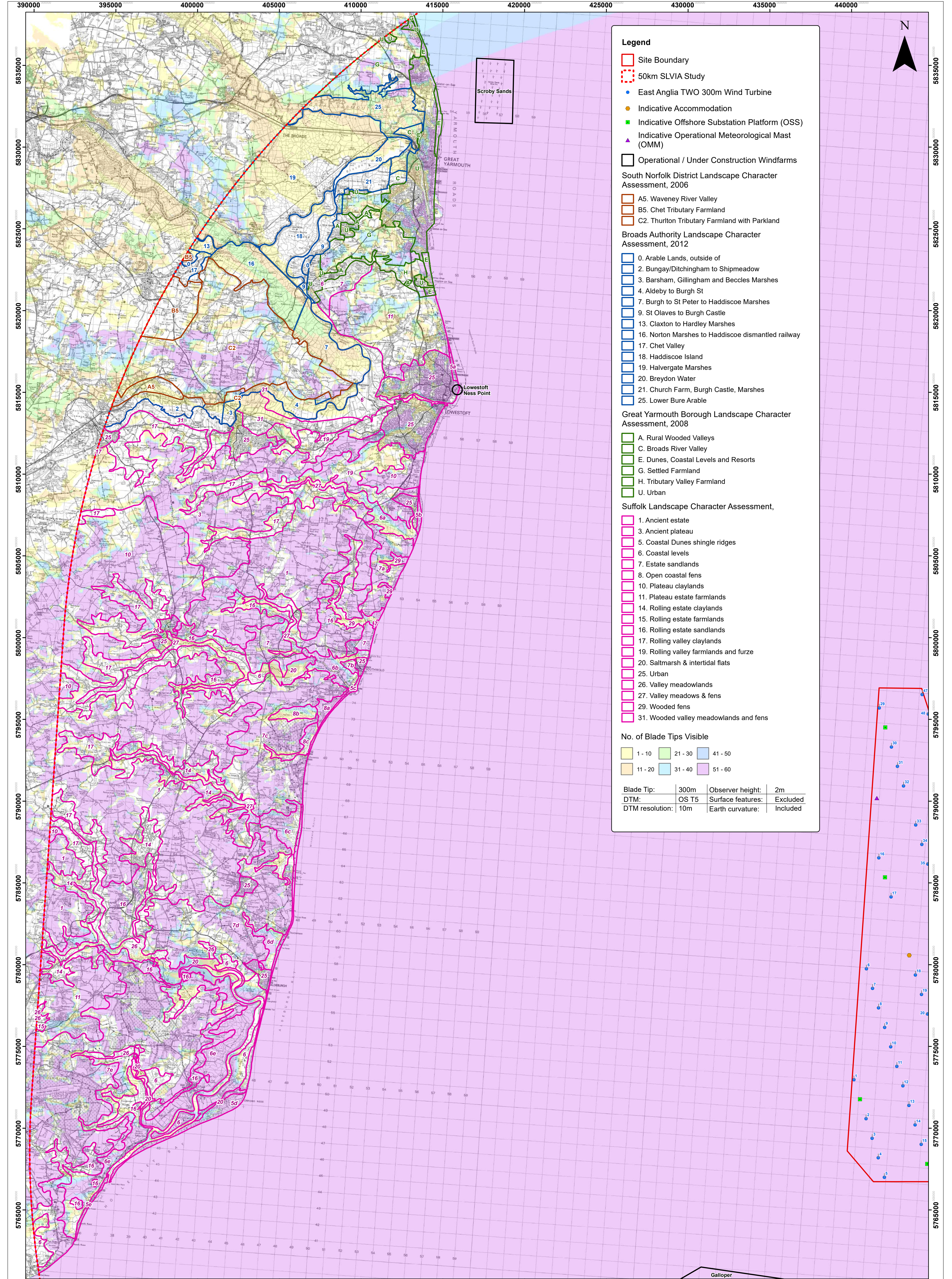
1:100,000
Scale @ A1

0 0.5 1 2 3 4 5 Km

This map has been produced by the latest version information of the time of issue, and has been produced for your information only. Please consult with the SPR Offshore GIS team to ensure the content is still current before using the information contained on this map. The User accepts that the information contained in this map and that it is made for any use, change or expense caused by any errors or omissions. Crown Copyright and the Ordnance Survey Licence. All Rights Reserved. Product Code: 100000000. This product has been derived from the national dataset from the UK Hydrographic Office with the permission of the Controller of Her Majesty's Stationery Office and the UK Hydrographic Office. NOT TO BE USED FOR NAVIGATION. Contains Ordnance Survey digital data. © Crown copyright. All rights reserved. 2018. Licence number: 100000000.

East Anglia T2O
Blade Tip ZTV (300m) with Seascape Character

Doc Ref	EA2-DEWFF-ENV-REP-IBR-000823	Datum:	WGS84
Rev	4	Projection:	UTM Z31N
Date	17/01/19		
Figure	28.15		



Legend

- Site Boundary
- 50km SLVIA Study
- East Anglia TZO 300m Wind Turbine
- Indicative Accommodation
- Indicative Offshore Substation Platform (OSS)
- Indicative Operational Meteorological Mast (OMM)
- Operational / Under Construction Windfarms

South Norfolk District Landscape Character Assessment, 2006

- A5. Waveney River Valley
- B5. Chet Tributary Farmland
- C2. Thurlton Tributary Farmland with Parkland

Broads Authority Landscape Character Assessment, 2012

- 0. Arable Lands, outside of
- 2. Bungay/Ditchingham to Shipmeadow
- 3. Barsham, Gillingham and Beccles Marshes
- 4. Aldeby to Burgh St
- 7. Burgh to St Peter to Haddiscoe Marshes
- 9. St Olaves to Burgh Castle
- 13. Claxton to Hardley Marshes
- 16. Norton Marshes to Haddiscoe dismantled railway
- 17. Chet Valley
- 18. Haddiscoe Island
- 19. Halvergate Marshes
- 20. Breydon Water
- 21. Church Farm, Burgh Castle, Marshes
- 25. Lower Bure Arable

Great Yarmouth Borough Landscape Character Assessment, 2008

- A. Rural Wooded Valleys
- C. Broads River Valley
- E. Dunes, Coastal Levels and Resorts
- G. Settled Farmland
- H. Tributary Valley Farmland
- U. Urban

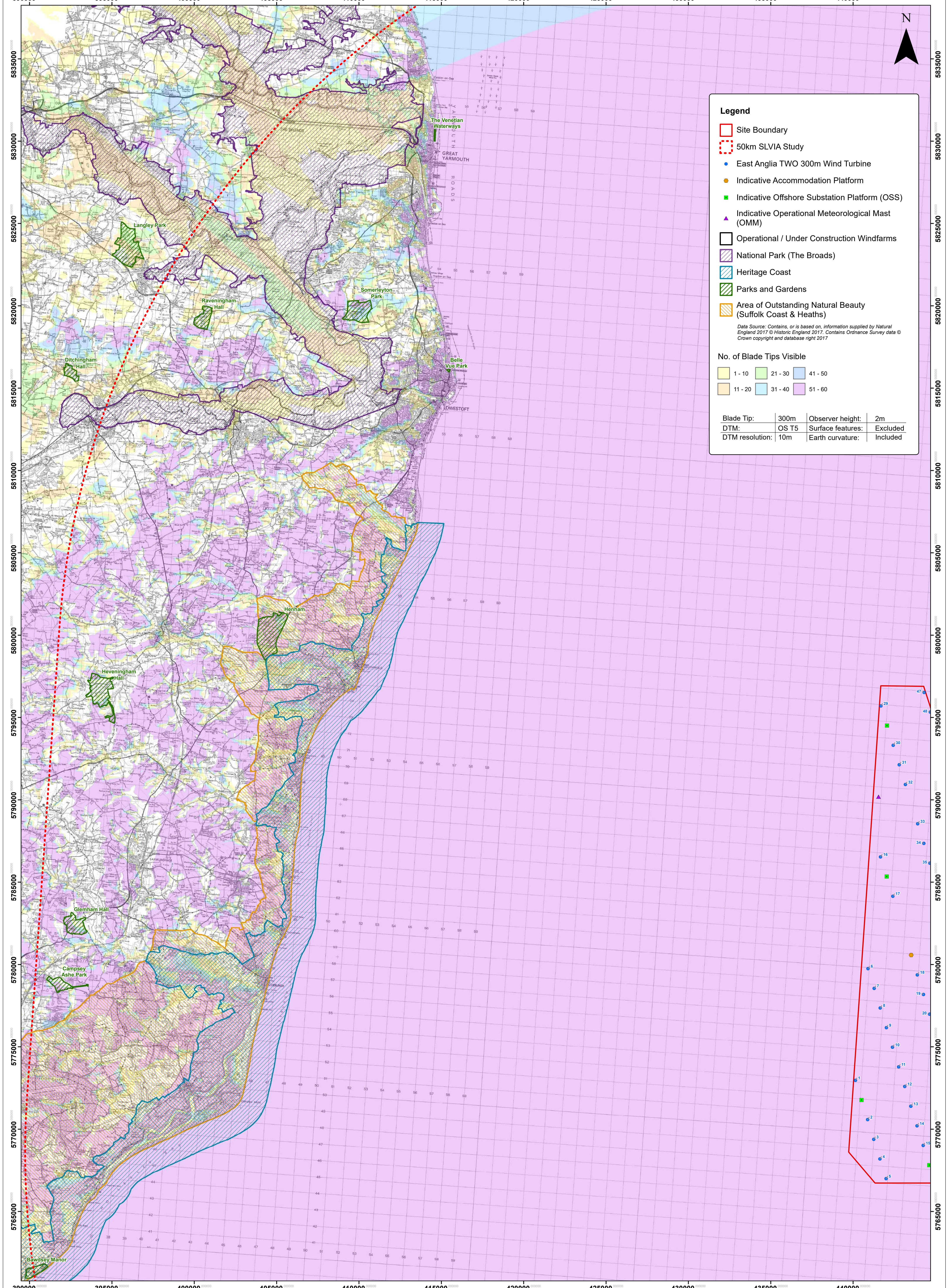
Suffolk Landscape Character Assessment,

- 1. Ancient estate
- 3. Ancient plateau
- 5. Coastal Dunes shingle ridges
- 6. Coastal levels
- 7. Estate sandlands
- 8. Open coastal fens
- 10. Plateau claylands
- 11. Plateau estate farmlands
- 14. Rolling estate claylands
- 15. Rolling estate farmlands
- 16. Rolling estate sandlands
- 17. Rolling valley claylands
- 19. Rolling valley farmlands and furze
- 20. Saltmarsh & intertidal flats
- 25. Urban
- 26. Valley meadowlands
- 27. Valley meadows & fens
- 29. Wooded fens
- 31. Wooded valley meadowlands and fens

No. of Blade Tips Visible

1 - 10	21 - 30	41 - 50
11 - 20	31 - 40	51 - 60

Blade Tip:	300m	Observer height:	2m
DTM:	OS T5	Surface features:	Excluded
DTM resolution:	10m	Earth curvature:	Included



Legend

- Site Boundary
- 50km SLVIA Study
- East Anglia TWO 300m Wind Turbine
- Indicative Accommodation Platform
- Indicative Offshore Substation Platform (OSS)
- ▲ Indicative Operational Meteorological Mast (OMM)
- Operational / Under Construction Windfarms
- National Park (The Broads)
- Heritage Coast
- Parks and Gardens
- Area of Outstanding Natural Beauty (Suffolk Coast & Heaths)

Data Source: Contains, or is based on, information supplied by Natural England 2017 © Historic England 2017. Contains Ordnance Survey data © Crown copyright and database right 2017

No. of Blade Tips Visible

1 - 10	21 - 30	41 - 50
11 - 20	31 - 40	51 - 60

Blade Tip:	300m	Observer height:	2m
DTM:	OS T5	Surface features:	Excluded
DTM resolution:	10m	Earth curvature:	Included

	4	16/01/2019	TH	Document Reference Update		
	3	20/12/2018	TH	Update Layout	Prepared:	TH
	2	31/10/2018	LA	Edits to legend	Checked:	SM
	Rev	Date	By	Comment	Approved:	LT

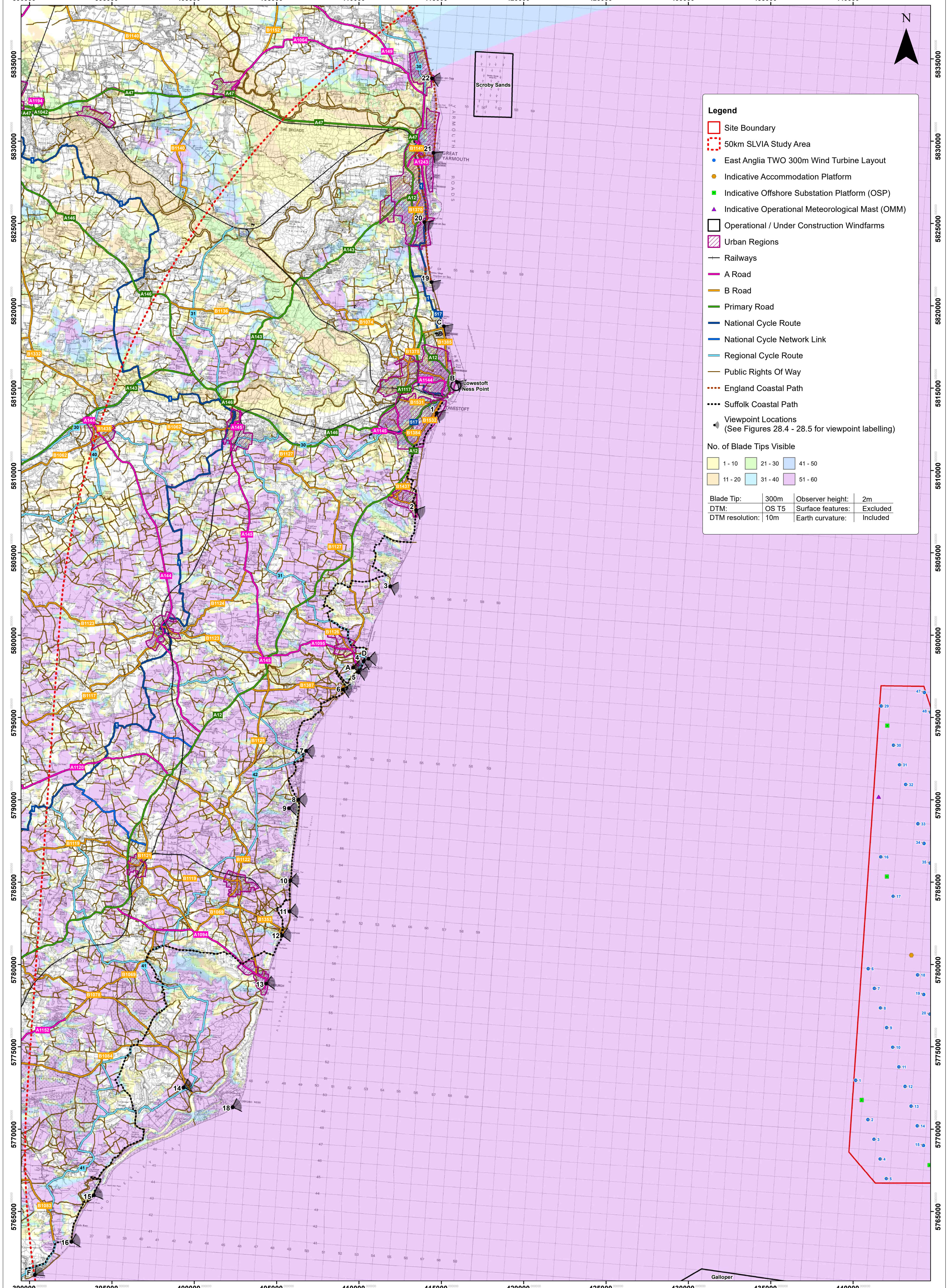
1:100,000
Scale @ A1

This map has been produced to the latest known information at the time of issue, and has been produced for your information only. Please consult with the SPR Offshore GIS team to ensure the content is still current before using the information contained on this map. To the best extent permitted by law, we accept no responsibility or liability (whether in contract, tort (including negligence) or otherwise) in respect of any errors or omissions in the information contained in this map and shall not be liable for any loss, damage or expense caused by any use of the information. © Crown Copyright and the Ordnance Survey. All Rights Reserved. Product Code: 100020210. This product has been derived from data provided by Ordnance Survey. Contains Ordnance Survey digital data. © Crown copyright. All rights reserved. OSL Licence number: 010020210.

East Anglia TWO

Blade Tip ZTV (300m) with Landscape Designations

Doc Ref	EAA-DEWFF-ENV-REP-IBR-000823	Datum:	WGS84
Rev	4	Date	17/01/19
Figure	28.18	Projection:	UTM Z31N



Legend

- Site Boundary
- 50km SLVIA Study Area
- East Anglia T2O 300m Wind Turbine Layout
- Indicative Accommodation Platform
- Indicative Offshore Substation Platform (OSP)
- ▲ Indicative Operational Meteorological Mast (OMM)
- Operational / Under Construction Windfarms
- Urban Regions
- Railways
- A Road
- B Road
- Primary Road
- National Cycle Route
- National Cycle Network Link
- Regional Cycle Route
- Public Rights Of Way
- England Coastal Path
- Suffolk Coastal Path
- ▲ Viewpoint Locations
(See Figures 28.4 - 28.5 for viewpoint labelling)

No. of Blade Tips Visible

1 - 10	21 - 30	41 - 50
11 - 20	31 - 40	51 - 60

Blade Tip:	300m	Observer height:	2m
DTM:	OS T5	Surface features:	Excluded
DTM resolution:	10m	Earth curvature:	Included

4	16/01/2019	TH	Document Reference Update		
3	20/12/2018	TH	Update Layout	Prepared:	MF
2	31/10/2018	LA	Edits to legend	Checked:	SM
Rev	Date	By	Comment	Approved:	LT

1:100,000
Scale @ A1

This map has been produced by the latest version information of the time of issue, and has been produced for your information only. Please consult with the SPR Offshore GIS team to ensure the content is not current before using the information contained on this map. To the fullest extent permitted by law, we accept no responsibility or liability (whether in contract, tort (including negligence) or otherwise) in respect of any errors or omissions in the information contained in this map, and shall not be liable for any loss, damage or expense caused by such errors or omissions. Crown Copyright and the Ordnance Survey Licence. All rights reserved. Ordnance Survey Licence No. 100020215. This product has been derived from material obtained from the Ordnance Survey with the permission of the Controller of Her Majesty's Stationery Office and the Ordnance Survey. NOT TO BE USED FOR NAVIGATION. Ordnance Survey Licence No. 100020215. © Crown copyright. All rights reserved. OS Licence number 100020215.

East Anglia T2O
Blade Tip ZTV (300m) with Visual Receptors

Doc Ref	EA2-DEWFF-ENV-REP-IBR-000823	Datum:	WGS84
Rev	4	Date	17/01/19
Figure	28.19	Projection:	UTM Z31N



Galopper