



Technical Appendix 12.1

Traffic Survey Data

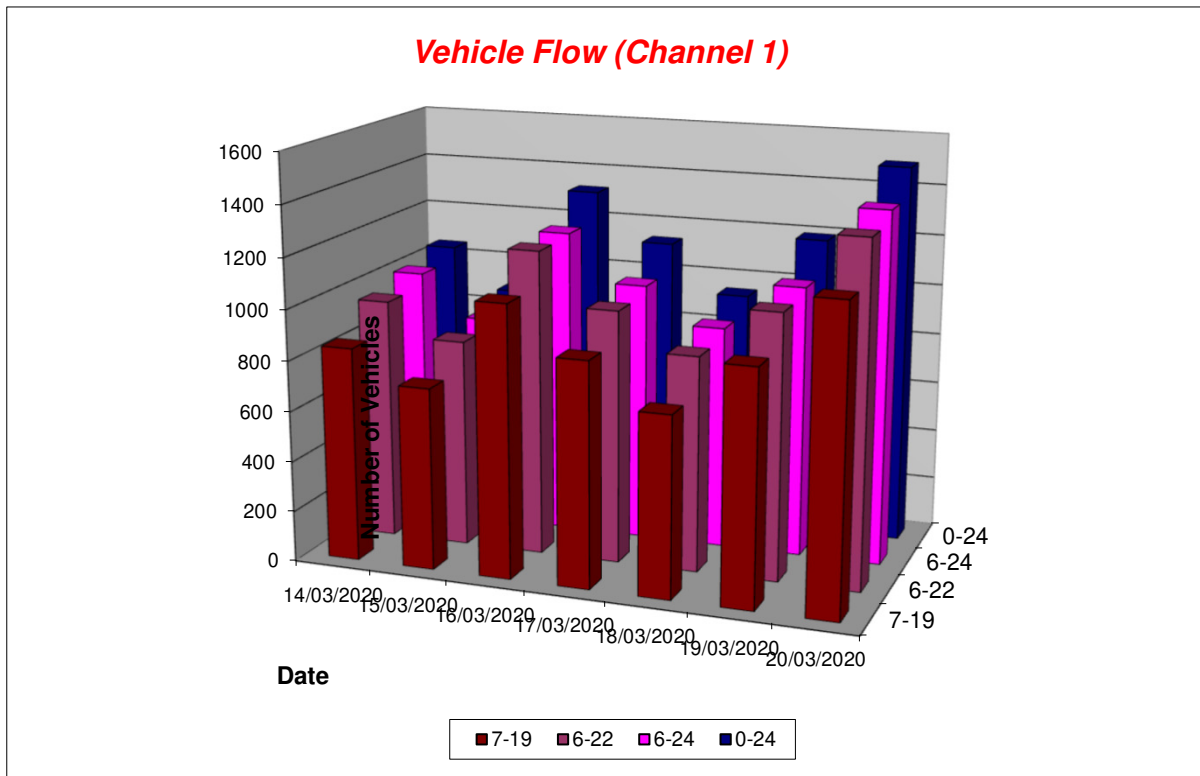
Ayr ATC, A76

Channel 1 - Eastbound

Vehicle Flow

Week 1

Hr Ending	14/03/2020 Saturday	15/03/2020 Sunday	16/03/2020 Monday	17/03/2020 Tuesday	18/03/2020 Wednesday	19/03/2020 Thursday	20/03/2020 Friday	5 Day Ave	7 Day Ave
1	3	12	4	1	2	1	6	3	4
2	5	10	1	3	4	8	9	5	6
3	1	6	3	4	3	5	4	4	4
4	4	4	7	3	6	5	9	6	5
5	2	6	14	15	14	11	12	13	11
6	32	10	80	79	29	90	68	69	55
7	27	8	58	55	55	56	53	55	45
8	26	9	104	122	100	102	80	102	78
9	44	31	92	83	80	96	92	89	74
10	47	39	83	43	69	76	89	72	64
11	70	52	73	60	52	74	87	69	67
12	69	61	84	86	69	92	78	82	77
13	76	84	89	73	55	70	97	77	78
14	91	68	120	64	72	84	116	91	88
15	87	92	99	76	63	104	117	92	91
16	122	89	89	103	51	68	126	87	93
17	94	90	89	88	51	84	124	87	89
18	78	50	82	48	34	42	113	64	64
19	42	54	68	40	17	29	69	45	46
20	32	51	27	26	21	22	50	29	33
21	21	22	23	16	34	21	35	26	25
22	31	23	25	16	28	26	20	23	24
23	27	12	5	23	29	21	33	22	21
24	20	4	3	5	4	3	9	5	7
7-19	846	719	1072	886	713	921	1188	956	906
6-22	957	823	1205	999	851	1046	1346	1089	1032
6-24	1004	839	1213	1027	884	1070	1388	1116	1061
0-24	1051	887	1322	1132	942	1190	1496	1216	1146



Ayr ATC, A76

Channel 1 - Eastbound

Average Speed

Week 1

Hr Ending	14/03/2020 Saturday	15/03/2020 Sunday	16/03/2020 Monday	17/03/2020 Tuesday	18/03/2020 Wednesday	19/03/2020 Thursday	20/03/2020 Friday
1	46.4	49.0	49.2	53.7	49.1	29.9	47.7
2	48.3	57.0	44.5	47.2	48.5	44.9	47.0
3	25.1	47.6	50.8	52.0	50.7	50.6	51.2
4	46.5	52.9	51.6	60.2	53.3	46.2	52.5
5	52.7	55.9	55.3	54.1	56.8	54.9	55.7
6	49.3	54.9	53.3	50.7	49.9	54.2	51.8
7	57.6	51.7	53.9	54.1	54.4	52.7	52.9
8	52.4	51.8	47.2	47.2	47.3	48.0	47.2
9	52.6	55.3	48.0	47.1	47.4	48.7	47.0
10	50.6	52.1	47.3	46.3	46.0	48.4	46.8
11	52.4	53.4	52.3	51.6	51.6	51.9	52.3
12	52.5	57.1	54.0	53.2	52.2	52.2	54.1
13	52.8	54.9	52.5	51.4	51.4	51.7	52.2
14	48.9	59.1	53.6	53.0	52.9	53.2	54.0
15	50.6	57.6	51.4	50.5	50.3	50.2	49.7
16	53.6	56.9	47.2	48.4	49.3	47.4	48.2
17	51.4	58.7	51.6	51.8	51.4	52.5	52.3
18	54.4	55.9	48.3	48.8	48.9	49.0	48.4
19	54.9	55.8	51.5	49.9	51.6	51.7	50.7
20	50.3	53.8	47.8	48.4	49.9	48.0	46.4
21	51.9	56.8	51.7	51.5	51.4	50.4	51.4
22	49.0	56.0	53.8	51.9	51.6	52.8	50.5
23	50.0	52.6	49.2	43.6	44.8	47.3	44.7
24	49.0	44.3	56.4	53.0	54.2	56.4	56.8

10-12	52.4	55.4	53.2	52.5	51.9	52.0	53.2
14-16	52.4	57.3	49.4	49.3	49.9	49.1	48.9
0-24	51.9	55.9	50.8	50.1	50.1	50.7	50.3

Average	51.2
---------	------

Channel 1 - Eastbound

85th Percentile

Hr Ending	14/03/2020 Saturday	15/03/2020 Sunday	16/03/2020 Monday	17/03/2020 Tuesday	18/03/2020 Wednesday	19/03/2020 Thursday	20/03/2020 Friday
1	55.9	54.3	54.3	-	51.8	-	51.0
2	61.2	64.7	-	48.9	49.9	46.5	49.7
3	-	55.1	53.6	54.4	52.4	53.0	53.9
4	47.4	60.0	58.3	62.4	62.3	55.9	65.7
5	57.1	67.2	62.9	61.6	64.4	63.3	63.1
6	56.6	60.5	60.2	56.9	55.9	63.2	59.0
7	66.7	57.6	60.8	61.4	60.2	60.7	59.4
8	58.3	56.8	57.0	55.9	56.5	57.7	57.2
9	62.2	65.6	58.6	57.1	57.9	59.7	58.0
10	57.3	58.2	59.1	55.9	55.7	56.6	57.1
11	57.4	61.7	58.9	58.2	58.6	59.0	58.7
12	60.2	64.9	64.5	61.9	59.8	62.9	64.2
13	58.8	62.8	62.4	60.1	59.8	59.9	58.7
14	57.2	65.2	61.2	59.8	60.2	60.8	64.2
15	57.9	64.3	60.1	58.4	59.5	58.3	58.4
16	60.9	64.5	55.4	57.2	57.7	56.6	56.9
17	57.8	66.4	60.6	60.2	57.0	60.2	61.4
18	59.8	62.5	57.3	53.8	54.4	57.1	55.1
19	63.7	63.5	61.0	57.6	59.1	58.8	59.5
20	58.6	63.6	56.4	58.1	56.9	56.5	55.5
21	58.5	66.8	59.0	57.3	60.4	58.7	60.2
22	53.9	64.8	60.1	55.9	54.5	55.3	54.5
23	56.4	61.5	53.2	49.9	51.3	54.5	51.3
24	56.0	45.0	62.0	54.4	54.7	60.7	61.8

10-12	58.1	63.2	62.6	60.8	59.1	61.0	62.2
14-16	59.8	64.5	57.8	57.8	58.8	58.1	57.6
0-24	59.0	64.2	60.0	58.4	58.1	59.4	58.7

85th %ile	59.9
-----------	------

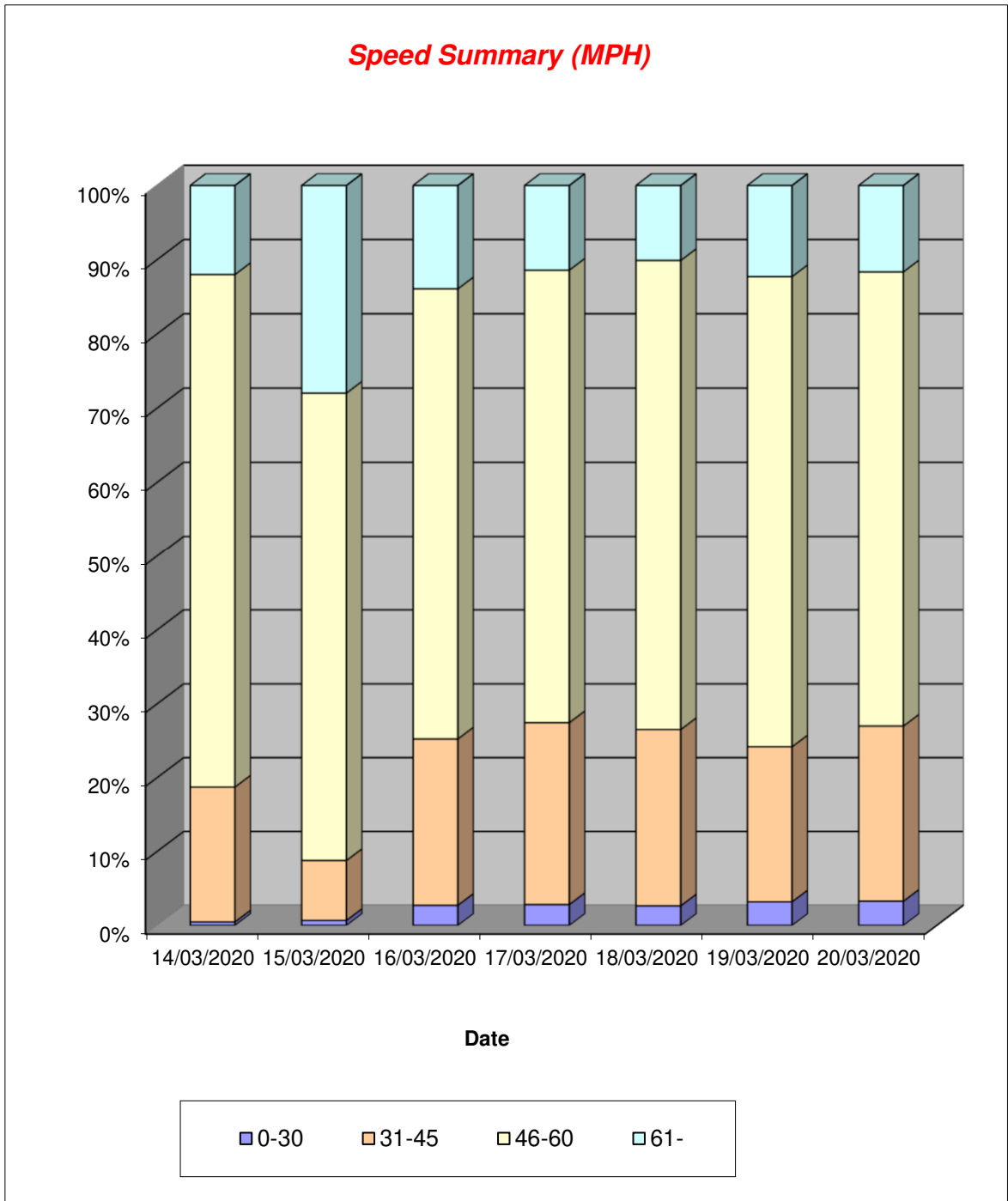
Ayr ATC, A76

Channel 1 - Eastbound

Speed Summary

Week 1

Speed (MPH)	14/03/2020 Saturday	15/03/2020 Sunday	16/03/2020 Monday	17/03/2020 Tuesday	18/03/2020 Wednesday	19/03/2020 Thursday	20/03/2020 Friday
0-30	5	6	36	32	25	38	49
31-45	192	72	298	279	225	250	355
46-60	728	561	804	692	597	756	918
61-	126	248	184	129	95	146	174
TOTAL	1051	887	1322	1132	942	1190	1496



Ayr ATC, A76

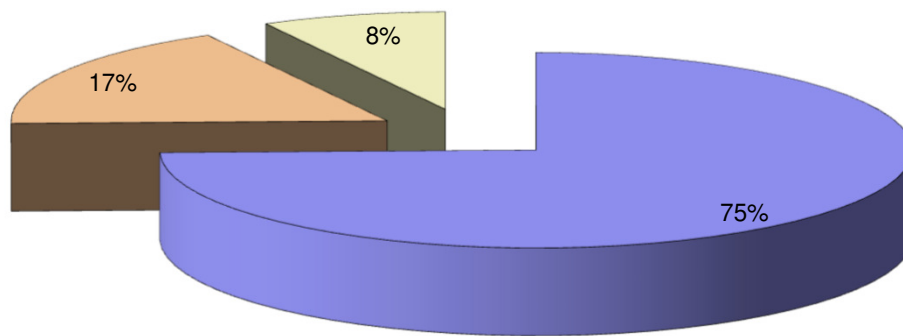
Channel 1 - Eastbound

Vehicle Class

Week 1

Classes Day / Time	Car / LGV / Caravan - 1	OGV1 / Bus - 2,3,5,6,7,12	OGV2 - 4,8,9,10,11,13	TOTAL - 1-13
14/03/2020				
7-19	747	77	22	846
6-22	840	93	24	957
6-24	885	94	25	1004
0-24	922	102	27	1051
15/03/2020				
7-19	645	58	16	719
6-22	737	69	17	823
6-24	748	72	19	839
0-24	790	76	21	887
16/03/2020				
7-19	747	227	98	1072
6-22	837	256	112	1205
6-24	844	256	113	1213
0-24	934	271	117	1322
17/03/2020				
7-19	609	183	94	886
6-22	691	204	104	999
6-24	711	204	112	1027
0-24	795	220	117	1132
18/03/2020				
7-19	482	161	70	713
6-22	583	186	82	851
6-24	606	186	92	884
0-24	648	197	97	942
19/03/2020				
7-19	626	211	84	921
6-22	711	239	96	1046
6-24	730	239	101	1070
0-24	832	253	105	1190
20/03/2020				
7-19	836	234	118	1188
6-22	944	266	136	1346
6-24	975	266	147	1388
0-24	1060	284	152	1496
Average				
7-19	670	164	72	906
6-22	763	188	82	1032
6-24	786	188	87	1061
0-24	854	200	91	1146

Total Vehicle Class Distribution



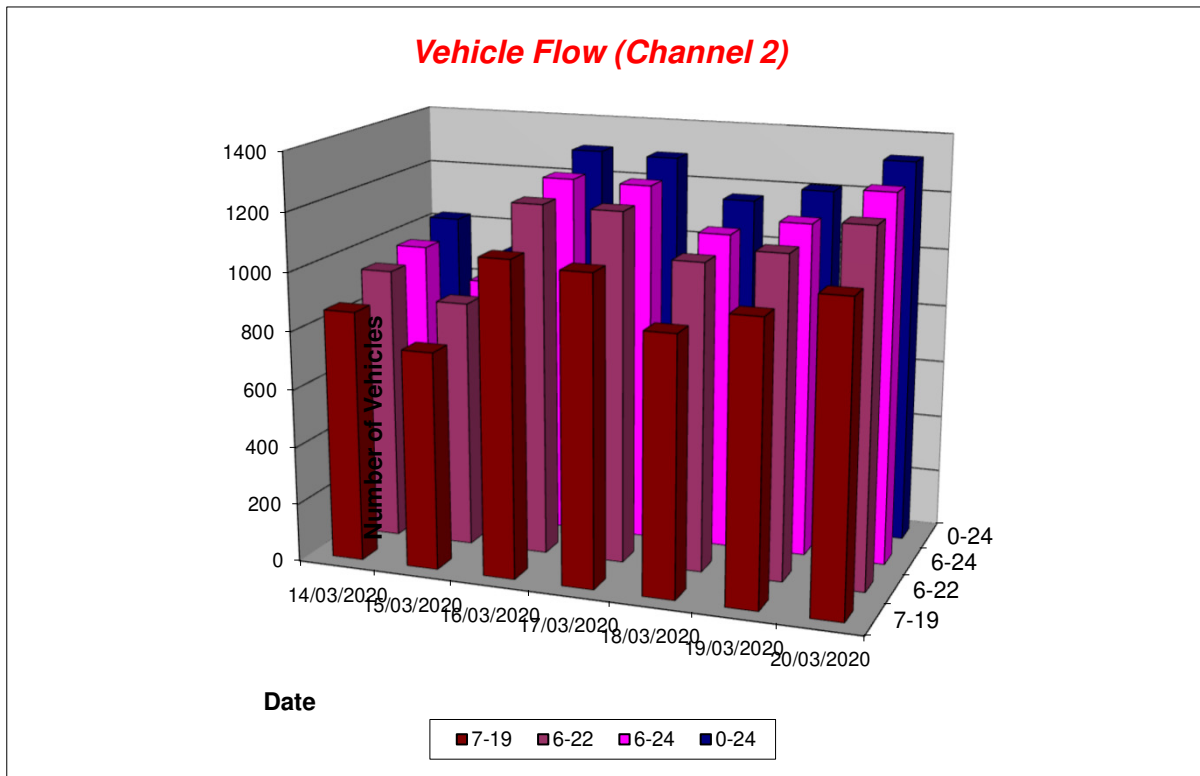
Ayr ATC, A76

Channel 2 - Westbound

Vehicle Flow

Week 1

Hr Ending	14/03/2020 Saturday	15/03/2020 Sunday	16/03/2020 Monday	17/03/2020 Tuesday	18/03/2020 Wednesday	19/03/2020 Thursday	20/03/2020 Friday	5 Day Ave	7 Day Ave
1	8	18	8	3	4	3	4	4	7
2	4	13	1	4	3	6	5	4	5
3	9	5	5	4	6	7	5	5	6
4	3	3	5	4	6	4	4	5	4
5	7	7	8	5	14	6	13	9	9
6	20	1	27	31	33	35	25	30	25
7	15	8	61	75	69	68	67	68	52
8	22	12	85	81	77	75	69	77	60
9	36	15	79	86	73	79	89	81	65
10	65	39	90	96	80	80	89	87	77
11	77	67	68	73	77	84	83	77	76
12	94	90	73	95	72	101	72	83	85
13	117	92	77	71	74	50	79	70	80
14	98	81	81	86	91	43	85	77	81
15	72	73	137	149	119	135	135	135	117
16	86	76	107	99	47	91	104	90	87
17	81	74	117	78	52	78	91	83	82
18	72	75	104	86	58	89	87	85	82
19	44	57	64	60	67	59	67	63	60
20	25	38	25	27	42	38	40	34	34
21	22	27	19	18	38	16	30	24	24
22	18	29	23	25	21	20	28	23	23
23	16	10	36	33	37	39	45	38	31
24	14	6	3	5	1	5	12	5	7
7-19	864	751	1082	1060	887	964	1050	1009	951
6-22	944	853	1210	1205	1057	1106	1215	1159	1084
6-24	974	869	1249	1243	1095	1150	1272	1202	1122
0-24	1025	916	1303	1294	1161	1211	1328	1259	1177



Ayr ATC, A76

Channel 2 - Westbound

Average Speed

Week 1

Hr Ending	14/03/2020 Saturday	15/03/2020 Sunday	16/03/2020 Monday	17/03/2020 Tuesday	18/03/2020 Wednesday	19/03/2020 Thursday	20/03/2020 Friday
1	50.9	45.3	50.4	48.7	51.1	43.9	47.0
2	53.5	48.4	60.4	57.9	59.0	58.7	56.9
3	47.5	47.6	44.4	43.3	40.9	41.3	41.5
4	49.2	38.0	49.8	48.4	45.9	50.3	50.5
5	49.5	39.6	46.2	37.2	41.3	45.0	41.4
6	48.4	65.7	53.0	55.1	53.6	49.6	54.3
7	49.8	50.7	53.0	53.3	53.2	52.9	53.3
8	54.9	54.4	47.6	48.6	49.4	45.6	49.0
9	51.8	50.4	38.7	39.7	38.8	39.8	39.7
10	49.1	49.5	43.1	45.0	44.0	42.3	42.7
11	51.7	48.4	43.4	43.2	42.5	43.5	43.8
12	49.3	49.9	46.2	45.4	44.2	44.8	46.4
13	49.0	50.9	42.0	41.4	41.8	40.0	41.4
14	50.6	52.1	45.3	45.4	44.7	44.8	45.6
15	49.6	53.8	39.8	39.1	37.9	39.6	38.4
16	50.4	52.1	41.9	40.7	40.7	40.7	40.6
17	50.2	53.0	45.2	47.0	46.8	44.7	45.6
18	49.4	51.5	46.9	46.7	46.8	47.5	45.6
19	48.3	50.4	46.4	47.0	46.3	45.3	46.1
20	47.0	53.9	45.3	46.9	46.9	46.5	46.3
21	43.9	46.0	50.0	49.2	47.9	49.6	50.3
22	45.6	47.8	50.7	51.8	49.4	49.7	50.6
23	48.5	57.9	45.7	44.4	43.8	45.5	44.3
24	46.6	51.1	53.8	52.3	52.7	54.4	51.3

10-12	50.4	49.2	44.8	44.4	43.3	44.2	45.0
14-16	50.1	52.9	40.7	39.7	38.7	40.0	39.4
0-24	49.6	50.9	44.7	44.9	44.7	44.3	44.6

Average	46.0
---------	------

Channel 2 - Westbound

85th Percentile

Hr Ending	14/03/2020 Saturday	15/03/2020 Sunday	16/03/2020 Monday	17/03/2020 Tuesday	18/03/2020 Wednesday	19/03/2020 Thursday	20/03/2020 Friday
1	53.1	55.3	54.6	48.9	54.1	44.7	48.7
2	59.9	52.7	-	59.2	60.7	60.0	58.0
3	51.0	53.9	49.5	49.4	45.8	45.6	45.2
4	52.2	42.7	54.7	52.0	51.3	54.5	55.8
5	54.4	47.6	55.0	40.9	45.5	55.6	45.0
6	55.1	-	60.3	60.9	58.6	55.8	61.9
7	59.6	58.6	59.1	59.5	59.2	57.9	59.7
8	61.4	63.0	56.9	56.4	57.6	55.0	57.7
9	58.1	55.5	48.4	48.1	44.7	50.5	47.4
10	54.9	55.9	50.9	55.4	54.2	52.9	54.1
11	57.5	57.0	51.5	52.5	50.5	50.3	52.5
12	54.7	56.2	54.7	53.6	50.7	53.3	55.1
13	55.8	57.3	53.2	50.5	50.9	50.3	49.3
14	56.8	58.3	52.2	53.3	54.0	50.1	52.6
15	55.5	59.9	48.8	49.2	47.9	49.0	48.7
16	57.6	57.4	50.4	49.3	49.1	49.2	48.3
17	57.3	58.0	54.6	54.9	55.4	53.6	54.1
18	56.4	57.7	55.2	55.3	54.4	54.5	52.9
19	55.1	55.9	53.5	53.9	54.2	51.0	53.3
20	55.1	59.6	55.2	55.0	56.8	57.0	55.4
21	49.4	52.7	55.1	55.6	54.1	54.9	59.2
22	50.5	54.4	56.0	59.0	55.0	57.2	55.6
23	54.9	67.9	54.0	51.9	51.1	54.5	50.5
24	56.8	57.1	57.4	55.8	-	57.1	54.6

10-12	55.9	56.5	54.0	53.6	50.5	51.5	54.3
14-16	57.1	59.4	49.8	49.3	48.5	49.1	48.6
0-24	56.6	57.5	54.3	54.6	54.4	54.0	54.3

85th %ile	55.0
-----------	------

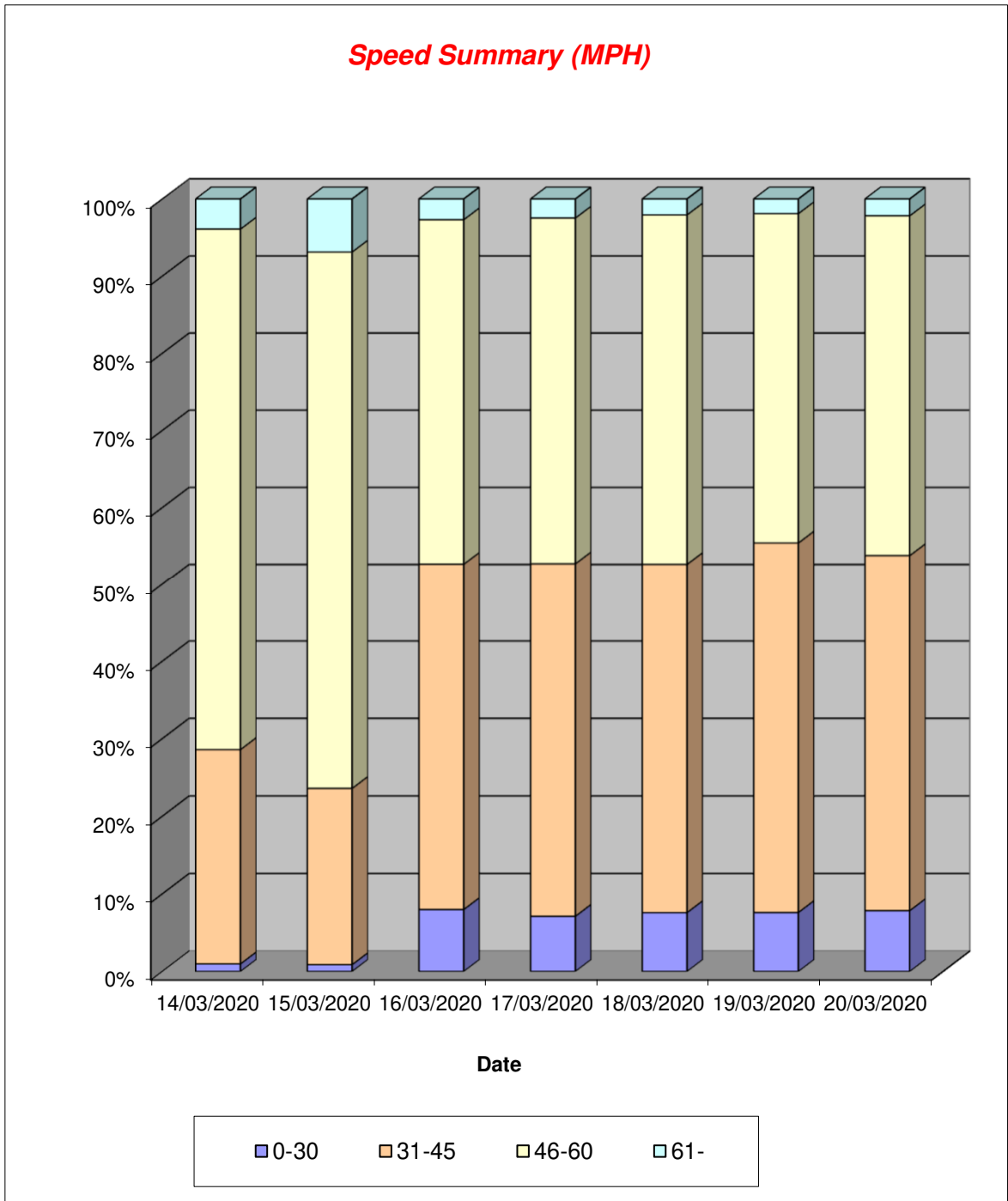
Ayr ATC, A76

Channel 2 - Westbound

Speed Summary

Week 1

Speed (MPH)	14/03/2020 Saturday	15/03/2020 Sunday	16/03/2020 Monday	17/03/2020 Tuesday	18/03/2020 Wednesday	19/03/2020 Thursday	20/03/2020 Friday
0-30	10	8	104	92	88	92	104
31-45	283	208	582	590	523	579	610
46-60	692	637	582	580	526	517	585
61-	40	63	35	32	24	23	29
TOTAL	1025	916	1303	1294	1161	1211	1328



Ayr ATC, A76

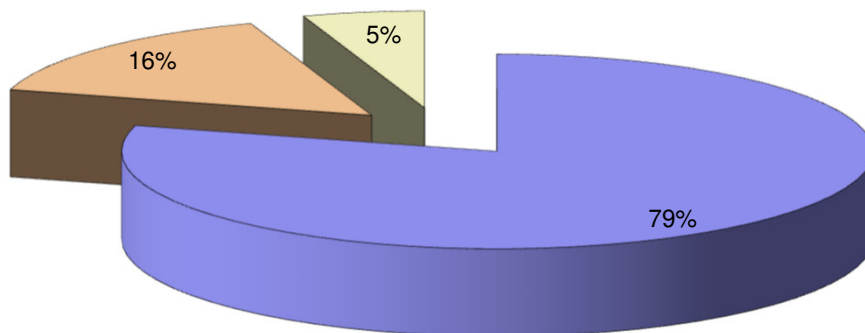
Channel 2 - Westbound

Vehicle Class

Week 1

Classes Day / Time	Car / LGV / Caravan - 1	OGV1 / Bus - 2,3,5,6,7,12	OGV2 - 4,8,9,10,11,13	TOTAL - 1-13
14/03/2020				
7-19	781	72	11	864
6-22	842	87	15	944
6-24	867	91	16	974
0-24	900	105	20	1025
15/03/2020				
7-19	694	47	10	751
6-22	786	55	12	853
6-24	801	56	12	869
0-24	843	60	13	916
16/03/2020				
7-19	812	201	69	1082
6-22	916	220	74	1210
6-24	952	222	75	1249
0-24	984	239	80	1303
17/03/2020				
7-19	794	191	75	1060
6-22	924	202	79	1205
6-24	957	204	82	1243
0-24	984	224	86	1294
18/03/2020				
7-19	673	155	59	887
6-22	819	172	66	1057
6-24	851	174	70	1095
0-24	882	205	74	1161
19/03/2020				
7-19	729	169	66	964
6-22	853	183	70	1106
6-24	893	185	72	1150
0-24	932	203	76	1211
20/03/2020				
7-19	780	201	69	1050
6-22	927	214	74	1215
6-24	975	218	79	1272
0-24	1005	240	83	1328
Average				
7-19	752	148	51	951
6-22	867	162	56	1084
6-24	899	164	58	1122
0-24	933	182	62	1177

Total Vehicle Class Distribution



ScottishPower Renewables

9th Floor

320 St Vincent Street

Glasgow

G2 5AD

T +44 (0)141 614 0451

euchanheadrenewables@scottishpower.com



**SCOTTISHPOWER
RENEWABLES**