

EUCHANHEAD RENEWABLE ENERGY DEVELOPMENT

Technical Appendix 8.1: Ecology Desk Study Report
Prepared for: ScottishPower Renewables

SLR Ref: 405.00481.00052
Version No: 3
October 2020



BASIS OF REPORT

This document has been prepared by SLR Consulting Limited with reasonable skill, care and diligence, and taking account of the manpower, timescales and resources devoted to it by agreement with ScottishPower Renewables (the Client) as part or all of the services it has been appointed by the Client to carry out. It is subject to the terms and conditions of that appointment.

SLR shall not be liable for the use of or reliance on any information, advice, recommendations and opinions in this document for any purpose by any person other than the Client. Reliance may be granted to a third party only in the event that SLR and the third party have executed a reliance agreement or collateral warranty.

Information reported herein may be based on the interpretation of public domain data collected by SLR, and/or information supplied by the Client and/or its other advisors and associates. These data have been accepted in good faith as being accurate and valid.

The copyright and intellectual property in all drawings, reports, specifications, bills of quantities, calculations and other information set out in this report remain vested in SLR unless the terms of appointment state otherwise.

This document may contain information of a specialised and/or highly technical nature and the Client is advised to seek clarification on any elements which may be unclear to it.

Information, advice, recommendations and opinions in this document should only be relied upon in the context of the whole document and any documents referenced explicitly herein and should then only be used within the context of the appointment.

CONTENTS

1.0 INTRODUCTION.....	1
1.1 Site Description.....	1
1.2 Site History.....	1
1.3 Desk Study Scope	1
2.0 METHODS	2
2.1 Protected and Notable Species	2
2.2 Designated sites.....	2
2.3 Nomenclature.....	3
3.0 RESULTS	4
3.1 Protected and Notable Species	4
3.2 Designated Sites	4
3.2.1 Statutory Designated Sites and Ancient Woodland	4
3.2.2 Locally Designated Sites.....	5

DOCUMENT REFERENCES

TABLES

Table 3-1: Designated Sites Summary	5
---	---

APPENDICES

Appendix 01: Protected/ Notable Species Records

Appendix 02: Figures

Appendix 03: Non-statutory Sites, Designations and Consultation Zones (provided by SWSEIC)

1.0 Introduction

SLR was commissioned by Scottish Power Renewables (SPR) in September 2019 to undertake an ecology desk study for the proposed Euchanhead Renewable Energy Development site (the Site), in Dumfries and Galloway, approximately 9.8 km south west of Sanquhar, as measured to the nearest turbine. The desk study was completed in 2019 and the results were used to inform plans for the proposed Development and the associated Environmental Impact Assessment (EIA).

1.1 Site Description

The site is split into three areas, these are the Euchanhead forest block to the north centred on NS 68275 05806, the Polskeoch forest block to the south centred on NS 69189 01615 and the Shinnelhead forest block in the south centred on NX 70149 99992 (**Figure 8.1.11, Appendix 02**). Altitude on site ranges between 330 m and 550 m. Both areas form part of the National Forest Estate and are both largely commercial forestry, with limited open ground along tracks and watercourses. They are separated by two peaks of open ground, Ryegrain Rig (600 m) and Corse Hill (580 m). Both areas are surrounded by upland moorland habitats. To the west of the site is Afton reservoir, watercourses in both the Euchanhead, Polskeoch and Shinnelhead forest blocks, the Euchan Water, Polskeoch Burn, Shinnel Water, and tributaries thereof, drain away from this reservoir, most flowing east and joining the River Nith in or downstream of Sanquhar. The Polveddoch Burn drains to the southwest, joining the Water of Ken. A recently constructed overhead line (South West Scotland (SWS), Connections Project) passes through the Euchanhead forest block, connecting local renewable energy projects to a new substation at Glenglass, on the northeast site boundary.

The site is accessible via an unclassified road between Sanquhar and the properties at Glenglass, via the water treatment works and the recently constructed Glenglass Substation. There are several properties within approximately 2 km of the site boundary, these include: Hillend in the Kello Valley to the north; Glenmaddie to the east; Glenglass and Bank Cottage to the south, in the Euchan Valley; and further south, Polskeoch and Dalgonar in the upper Scaur Valley. The Southern Upland Way (SUW) passes through the site within the Polskeoch forest block.

1.2 Site History

In 2013 SPR submitted a section 36 scoping request for a windfarm development at Euchanhead which consisted of three separate land parcels, namely Corserig (Northern), Euchanhead (Middle) and Polskeoch (Southern). However, development activity was temporarily paused. During this process a number of ecology surveys were undertaken to establish EIA baseline data for the site. The Corserig area has since been dropped and the current development proposals cover only the Euchanhead and Polskeoch areas. The combined site continues to be promoted as Euchanhead.

1.3 Desk Study Scope

This desk study is designed to give an overview of relevant existing ecological data, including data for protected and notable (e.g. rare or invasive), species and designated sites nearby (up to 10 km for statutory designated sites and up to 2 km for species and for non-statutory designated sites). The desk study summarises the results of surveys undertaken in 2013, as well as data obtained from the South West Scotland Environmental Information Centre (SWSEIC) and data provided within Environmental Statements for other nearby development proposals.

Ornithological surveys and assessments have been commissioned separately and the scope of this desk study is therefore restricted to habitats and non-avian species.

2.0 Methods

2.1 Protected and Notable Species

Desk study data were acquired for protected and notable species from the following sources:

- SWSEIC;
- EIA reports and any post consent/construction information for wind farms and other developments within 2 km of the site (where available), including:
 - SPEN. 2007. South West Scotland Renewables Connection Project Environmental Statement: http://swsproject.com/SWS_ES.php (runs through the site);
 - E.ON. 2004. Afton Wind Farm Proposal: Environmental Statement: non-technical summary: https://www.eonenergy.com/~media/PDFs/Generation/wind/onshore/afton/Afton_NTS_-_Final_Oct04.pdf (4 km west of the Euchanhead forest block);
 - SSE. 2015. Construction Environmental Management Plan (CEMP) and Construction Method Statement: Whiteside Hill Wind Farm (Project Ref. LN000048) (c. 1 km south east of Euchanhead forest block);
 - Community Wind. 2019. Sanquhar II Community Wind Farm: EIA Report (adjacent to the west of the Euchanhead forest block, between the Euchanhead and Polskeoch forest blocks and adjacent to the east of the Polskeoch forest block); and
 - Amec. 2015. Lorg Wind Farm: Environmental Statement. Volume 1: Main report (adjacent to the west of the Polskeoch forest block).
- historic ecological survey reports for the site:
 - Arcus. 2013. Protected species survey overview: Euchanhead Wind Farm; and
 - MacArthur Green. 2012. Euchanhead Wind Farm: Extended Phase 1 Habitat Survey Report.

Searches for protected and notable species data from SWSEIC were limited to:

- data from all years; and
- from within 10 km of the site for all bat species; and
- from within 2 km of the site for all other species.

2.2 Designated sites

Information regarding designated sites in the area surrounding the Site was obtained from SWSEIC, the MAGIC online GIS tool¹ and the Scottish Natural Heritage² (SNH) Sitelink website³. Sites designated for their ecological interests were searched for within 10 km for statutory designated sites, and up to 2 km for locally designated sites. Designation types searched for included:

- Special Areas of Conservation (SACs);
- Special Protection Areas (SPAs);

¹ <https://magic.defra.gov.uk/>

² SNH were renamed to NatureScot on 24 August 2020.

³ <https://sitelink.nature.scot/home>

- Ramsar sites;
- Sites of Special Scientific Interest (SSSIs);
- Locally designated sites such as Local Nature Conservation Sites (LNCS) or Local Wildlife Sites (LWS); and
- Local Nature Reserves (LNR), National Nature Reserves (NNR) and RSPB and Wildlife Trust Reserves.

In addition, the search included woodlands listed on the Ancient Woodland Inventory within 10 km.

2.3 Nomenclature

For ease of understanding for most readers only common (English) names for species are used within the main body of the report (unless a species has no common name). Scientific (Latin) names are provided in **Appendix 01**.

3.0 Results

The information below summarises information on records of all protected/ notable species and designated sites within 2 km of the site (10 km for statutory designated sites and bats). A more detailed summary is provided in **Appendix 01**.

3.1 Protected and Notable Species

The desk study data (from the local records centre and relevant ecological reports), includes records for the following protected or notable species from within 2 km of the site:

- eight species of mammals, including the legally protected species otter, water vole, badger, pine marten and red squirrel;
- at least eight species of bat (within 10 km of the site), including common pipistrelle, soprano pipistrelle, noctule and Leisler's, all of which are considered to be at high risk from wind turbines under current guidelines⁴;
- three species of reptile, common lizard, slow-worm and adder;
- two species of fish, Atlantic salmon and trout;
- twenty-one species of insect, in particular species reliant on wetland and heath habitats;
- two species of plant, juniper and field gentian; and
- ten species of lichen/ lungwort.

Records for only one invasive species, grey squirrel, were included in the desk study data.

Survey for great crested newt have been carried out in the area during for the SWS interconnector however no great crested newt have been found ⁸.

3.2 Designated Sites

3.2.1 Statutory Designated Sites and Ancient Woodland

Statutory designated sites within 10 km of the site are illustrated on **Figure 8.1.1, Appendix 02** and listed in **Table 3-1**. The Muirkirk and North Lowther Uplands SPA is designated only for its ornithological interest and therefore is not relevant in terms of non-avian ecology (although it is shown on **Figure 8.1.1** and included in **Table 3-1** for completeness). Menzies Water SSSI is designated for wetland habitat associated with riparian zones however this site is upstream of the Site so there is no hydrological connectivity with the site. Fountainhead, Polholte and Polneut Burns and Lagrae Burn SSSI's are designated for geological features and therefore not relevant in terms of non-avian ecology. The remainder of the sites are designated for woodland, juniper and upland habitats and given the intervening distances are therefore unlikely to be ecologically connected to the proposed development site.

There are a number of areas of woodland in the area surrounding the site that are listed on the Ancient Woodland Inventory (AWI), the closest is within 132 m of the site however none are within the site boundaries (**Figure 8.1.1, Appendix 02**).

⁴ Scottish Natural Heritage, Natural England, Natural Resources Wales, RenewableUK, Scottish Power Renewables, Ecotricity Ltd, the University of Exeter and the Bat Conservation Trust (BCT). 2019. *Bats and Onshore Wind Turbines: Survey, Assessment and Mitigation*. Version: January 2019.

Table 3-1: Designated Sites Summary

Name	Designation	Distance to Site (km)	Direction from Site	Qualifying Features Summary
Muirkirk and North Lowther Uplands	SPA	6.38	NE	Golden plover, hen harrier, merlin, peregrine and short-eared owl.
		8.27	N	
Upper Nithsdale Woods	SAC	4.93	E	Mixed woodland on base-rich soils associated with rocky slopes.
		5.13	E	
		6.78	SE	
		7.33	NE	
		8.08	NE	
Tynron Juniper Wood	SAC	9.66	SE	Juniper on heaths or calcareous grasslands.
Back Wood	SSSI	7.33	NE	Upland oak woodland
Mennock Water	SSSI	8.08	NE	Fen meadow and Upland oak woodland
Stenhouse Wood	SSSI	6.78	SE	Upland mixed ash woodland
Tynron Juniper Wood	SSSI	9.66	SE	Juniper scrub
North Lowther Uplands	SSSI	6.38	NE	Breeding bird assemblage, hen harrier and upland habitats.
Chanlockfoot	SSSI	4.93	E	Mixed woodland on base-rich soils associated with rocky slopes
		5.13	E	
Muirkirk Uplands	SSSI	8.27	N	Blanket bog, breeding bird assemblages, hen harrier, short eared owl and upland habitats.

3.2.2 Locally Designated Sites

Two Local Wildlife Sites Glenmaddie Wood LWS and Afton Uplands Provisional LWS are within 2 km of the site. In addition, the site and 2 km buffer area is entirely overlapped by the Galloway and Southern Ayrshire Biosphere reserve (**Appendix 03**).

All of the woodlands within the site and within 2 km of the site are former red squirrel priority woodlands, as assessed and identified using the Reynolds and Bentley⁵ selection criteria for priority woodland for red squirrel conservation. Whilst these areas have now been superseded in terms of strategic priorities by the red squirrel strongholds (none of which are present within the study area), these sites indicate habitats considered to be of local importance for red squirrels.

⁵ Reynolds, J and Bentley, S (2001) Selecting Refuge Sites for Red Squirrel Conservation. Paper prepared for UK Red Squirrel Group.

Glenmaddie Wood LWS

Glenmaddie Wood LWS (c. 22 ha) is located 3 km southwest of Sanquhar, downstream of the proposed site on either side of the Euchan Water, and consists of areas of broad-leaved woodland, scrub, acidic grassland, stands of bracken and riparian habitats.

The river is fast-flowing and the channel rocky with species like goldenrod growing on the rocks. The woodland occupies the slopes above the river and varies in character from fairly dense woodland downstream to much sparser woodland, sometimes just occasional trees, upstream.

Downy birch, ash, alder, grey willow and hazel are the dominant species while there is a typical woodland flora in the field and ground layers with species such as wood sorrel and common dog-violet. Locally uncommon species, including oak fern and giant fescue also occur.

Afton Uplands Provisional LWS

Afton Uplands pLWS is an extensive upland site which encompasses a range of upland mire, montane heath and grassland habitats. It meets with the north western edge of the Polskeoch forest block. The LWS contains alpine clubmoss and juniper. The montane sedge *Carex bigelowii* is frequent over the summit of Craigbraneoch and Blackcraig both of which are over 2 km from the proposed development site.

Galloway and Southern Ayrshire Biosphere reserve⁶

Biospheres are places with world-class environments that are designated by the United Nations to promote and demonstrate a balanced relationship between people and nature. They are established through the United Nations Educational, Scientific, and Cultural Organization (UNESCO) Programme on Man and the Biosphere (MAB). Biospheres have three main functions: conservation; learning /research; and sustainable development. Biosphere designation brings no new regulation of activities within the areas designated.

The Galloway and Southern Ayrshire Biosphere Reserve was designated in 2012. It is comprised of a major biogeographic region represented by an upland massif centered on the Merrick and the rivers that flow from this upland down through forests and farmland to the sea. Landscape mosaics in the area comprise uplands, moorlands, mires, woodlands and forests, farmland, river valleys, coast and shoreline. The Biosphere Reserve is working to demonstrate the importance of landscapes and ecosystems for the future of sustainable development in a region which is undergoing change in traditional livelihoods.

⁶ <http://www.unesco.org/new/en/natural-sciences/environment/ecological-sciences/biosphere-reserves/europe-north-america/united-kingdom-of-great-britain-and-northern-ireland/galloway-and-southern-ayrshire-biosphere/>

APPENDIX 01

Protected/ Notable Species Records

Appendix 01, Table 1: Summary of Protected/ Notable Species Records

Species	Location	Data Source	Last record	Protection/ Conservation Status (see Table 3 for definitions)
Mammals				
Otter, <i>Lutra lutra</i>	On site	Arcus 2013 ⁷ , SPEN 2007 ⁸ , E.ON 2004 ⁹ , SWSEIC, SSE 2015 ¹⁰ , Community Wind 2019, Amec 2015 ¹¹	2013	HabRegs2, WCA5/9.4b, WCA5/9.4c, WCA5/9.5a, AYR-LBAP, DGLBAP09, ScotBL, UKBAP
Badger, <i>Meles meles</i>	≤2 km	Community Wind 2019, Amec 2015	2019	Bern-A3, Protection_of_Badgers_Act_1992
Red squirrel, <i>Sciurus vulgaris</i>	On site	Arcus 2013, SPEN 2007, SWSEIC	2017	WCA5/9.1k/l, WCA5/9.1t, WCA5/9.2, WCA5/9.4.a, WCA5/9.4b, WCA5/9.4c, WCA5/9.5a, AYR-LBAP, DGLBAP09, ScotBL, UKBAP

⁷ ARCUS. 2013. Protected species survey overview: Eucharhead Wind Farm.

⁸ SPEN. 2007. South West Scotland Renewables Connection Project Environmental Statement: http://swsproject.com/SWS_ES.php

⁹ E.ON. 2004. Afton Wind Farm Proposal: Environmental Statement: non-technical summary:

https://www.eonenergy.com/~media/PDFs/Generation/wind/onshore/afton/Afton_NTS_-_Final_Oct04.pdf

¹⁰ SSE. 2015. Construction Environmental management Plan (CEMP) and Construction Method Statement: Whiteside Hill Wind Farm (Project Ref. LN000048)

¹¹ Amec. 2015. Lorg Wind Farm: Environmental Statement. Volume 1: Main report

Species	Location	Data Source	Last record	Protection/ Conservation Status (see Table 3 for definitions)
Water vole, <i>Arvicola amphibious</i>	On site	SPEN 2007, SWSEIC	2007	WCA5/9.4.a, WCA5/9.4b, WCA5/9.4c, DGLBAP09, ScotBL, UKBAP
Mountain hare, <i>Lepus timidus</i>	≤2 km	SWSEIC	2017	HabRegs4, DGLBAP09, ScotBL, UKBAP
West European hedgehog, <i>Erinaceus europaeus</i>	≤2 km	SWSEIC	2005	ScotBL, UKBAP
Brown hare, <i>Lepus europaeus</i>	≤2 km	SWSEIC	2016	AYR-LBAP, DGLBAP09, ScotBL, UKBAP
Pine marten, <i>Martes martes</i>	≤2 km	Community Wind 2019	2019	WCA5/9.1k/l, WCA5/9.1t, WCA5/9.2, WCA5/9.4.a, WCA5/9.4b, WCA5/9.4c, WCA5/9.5a, AYR-LBAP, DGLBAP09, ScotBL, UKBAP
Bats				
Natterer's bat, <i>Myotis nattereri</i>	≤ 10 km	SWSEIC	2016	HabRegs2, WCA5/9.4b, WCA5/9.4c, WCA5/9.5a, DGLBAP09, ScotBL
Common pipistrelle, <i>Pipistrellus pipistrellus</i>	≤ 10 km	SWSEIC, Community Wind 2019, Amec 2015	2016	HabRegs2, WCA5/9.4b, WCA5/9.4c, WCA5/9.5a, AYR-LBAP, DGLBAP09
Soprano pipistrelle, <i>Pipistrellus pygmaeus</i>	≤ 10 km	SWSEIC, Community Wind 2019 ¹² , Amec 2015	2016	HabRegs2, WCA5/9.4b, WCA5/9.4c, WCA5/9.5a, AYR-LBAP, DGLBAP09
Whiskered/Brandt's, <i>Myotis mystacinus/brandtii</i>	≤ 10 km	SWSEIC	2016	HabRegs2, WCA5/9.4b, WCA5/9.4c, WCA5/9.5a
Brown Long-eared, <i>Plecotus auritus</i>	≤ 10 km	SWSEIC	2016	HabRegs2, WCA5/9.4b, WCA5/9.4c, WCA5/9.5a, DGLBAP09, ScotBL, UKBAP
Daubenton's, <i>Myotis daubentonii</i>	≤ 10 km	SWSEIC, Community Wind 2019, Amec 2015	2016	HabRegs2, WCA5/9.4b, WCA5/9.4c, WCA5/9.5a, DGLBAP09, ScotBL

¹² Community Wind. 2019. Sanquhar II Community Wind Farm: EIA Report

Species	Location	Data Source	Last record	Protection/ Conservation Status (see Table 3 for definitions)
Leisler's bat, <i>Nyctalus leisleri</i>	≤ 10 km	SWSEIC, Community Wind 2019, Amec 2015	2016	HabRegs2, WCA5/9.4b, WCA5/9.4c, WCA5/9.5a
Noctule bat, <i>Nyctalus noctula</i>	≤ 10 km	SWSEIC, Community Wind 2019	2016	HabRegs2, WCA5/9.4b, WCA5/9.4c, WCA5/9.5a
Reptiles and amphibians				
Adder, <i>Vipera berus</i>	≤2 km	SWSEIC	1972	WCA5/9.1k/l, WCA5/9.5a, DGLBAP09, ScotBL, UKBAP
Common lizard, <i>Zootoca vivipara</i>	≤2 km	SWSEIC, MacArthur Green 2012 ¹³ , Community Wind 2019	1999	WCA5/9.1k/l, WCA5/9.5a, ScotBL, UKBAP
Slow-worm, <i>Anguis fragilis</i>	≤2 km	SWSEIC	1999	WCA5/9.1k/l, WCA5/9.5a, ScotBL, UKBAP
Fish				
Salmon	≤2 km	E.ON 2004, SWSEIC, Community Wind 2019	2004	HabRegs3, DGLBAP09, ScotBL, UKBAP
Sea trout	≤2 km	E.ON 2004, SWSEIC, Community Wind 2019	2004	DGLBAP09, SBL
Invertebrates				
beetle, <i>Hydroporus longulus</i>	≤2 km	SWSEIC	2017	DGLBAP09, ScotBL
beetle, <i>Cyphon kongsbergensis</i>	≤2 km	SWSEIC	2017	DGLBAP09, ScotBL

¹³ MacArthur Green.2012. Eucharhead Windfarm: Extended Phase 1 Habitat Survey Report.

Species	Location	Data Source	Last record	Protection/ Conservation Status (see Table 3 for definitions)
Slender-footed robberfly, <i>Leptarthrus brevirostris</i>	≤2 km	SWSEIC	1995	ScotBL
Cloud-living spider, <i>Semljicola caliginosus</i>	≤2 km	SWSEIC	2017	ScotBL, UKBAP
Small heath, <i>Coenonympha pamphilus</i>	≤2 km	SWSEIC	2018	ScotBL, UKBAP
Small pearl-bordered fritillary, <i>Boloria selene</i>	≤2 km	SWSEIC	2011	DGLBAP09, ScotBL, UKBAP
Latticed heath, <i>Chiasmia clathrata</i>	≤2 km	SWSEIC	1996	ScotBL, UKBAP
Haworth's minor, <i>Celaena haworthii</i>	≤2 km	SWSEIC	2010	ScotBL, UKBAP
Rosy rustic, <i>Hydraecia micacea</i>	≤2 km	SWSEIC	2010	ScotBL, UKBAP
Shaded broad-bar, <i>Scotopteryx chenopodiata</i>	≤2 km	SWSEIC	2003	ScotBL, UKBAP
Ear moth, <i>Amphipoea oculea</i>	≤2 km	SWSEIC	2003	ScotBL, UKBAP
Minor shoulder-knot, <i>Brachyolomia viminalis</i>	≤2 km	SWSEIC	2010	ScotBL, UKBAP
Red carpet, <i>Xanthorhoe decoloraria</i>	≤2 km	SWSEIC	2003	ScotBL, UKBAP
Anomalous, <i>Stilbia anomala</i>	≤2 km	SWSEIC	2010	ScotBL, UKBAP
Green-brindled crescent, <i>Allophyes oxyacanthae</i>	≤2 km	SWSEIC	2003	ScotBL, UKBAP

Species	Location	Data Source	Last record	Protection/ Conservation Status (see Table 3 for definitions)
Dusky brocade, <i>Apamea remissa</i>	≤2 km	SWSEIC	2003	ScotBL, UKBAP
Brindled ochre, <i>Dasypolia templi</i>	≤2 km	SWSEIC	2003	ScotBL, UKBAP
Small square-spot, <i>Diarsia rubi</i>	≤2 km	SWSEIC	2010	ScotBL, UKBAP
Autumnal rustic, <i>Eugnorisma glareosa</i>	≤2 km	SWSEIC	2010	ScotBL, UKBAP
Flora				
Juniper, <i>Juniperus communis</i>	≤2 km	SWSEIC	2012	AYR-LBAP, DGLBAP09, ScotBL, UKBAP
Field gentian, <i>Gentianella campestris</i>	≤2 km	SWSEIC	1996	ScotBL, UKBAP
Lungwort, <i>Lobaria pulmonaria</i>	≤2 km	SWSEIC	1988	WCA8, DGLBAP09, ScotBL
lichen, <i>Nephroma laevigatum</i>	≤2 km	SWSEIC	1988	DGLBAP09, ScotBL
lichen, <i>Sticta limbata</i>	≤2 km	SWSEIC	1988	DGLBAP09, ScotBL
lichen, <i>Peltigera collina</i>	≤2 km	SWSEIC	1988	DGLBAP09, ScotBL
lichen, <i>Leptogium burgessii</i>	≤2 km	SWSEIC	1988	DGLBAP09, ScotBL
lichen, <i>Lobaria scrobiculata</i>	≤2 km	SWSEIC	1988	DGLBAP09, ScotBL
lichen, <i>Lobaria virens</i>	≤2 km	SWSEIC	1988	DGLBAP09, ScotBL
lichen, <i>Sticta sylvatica</i>	≤2 km	SWSEIC	1988	DGLBAP09, ScotBL
lichen, <i>Parmeliella triptophylla</i>	≤2 km	SWSEIC	1988	DGLBAP09, ScotBL

Appendix 01, Table 2: Latin names of Species Mentioned in the Text (where not included in Table 1)

Common name	Latin name
Ash	<i>Fraxinus excelsior</i>
Alder	<i>Alnus glutinosa</i>
Dog violet	<i>Viola riviniana</i>
Downy birch	<i>Betula pubescens</i>
Golden rod	<i>Solidago virgaurea</i>
Grey willow	<i>Salix cinerea</i>
Giant fescue	<i>Festuca gigantea</i>
Hazel	<i>Corylus avellana</i>
Oak Fern	<i>Gymnocarpium dryopteris</i>
Wood sorrel	<i>Oxalis acetosella</i>

Appendix 01, Table 3: Glossary of Codes for Species Protection/ Conservation Status

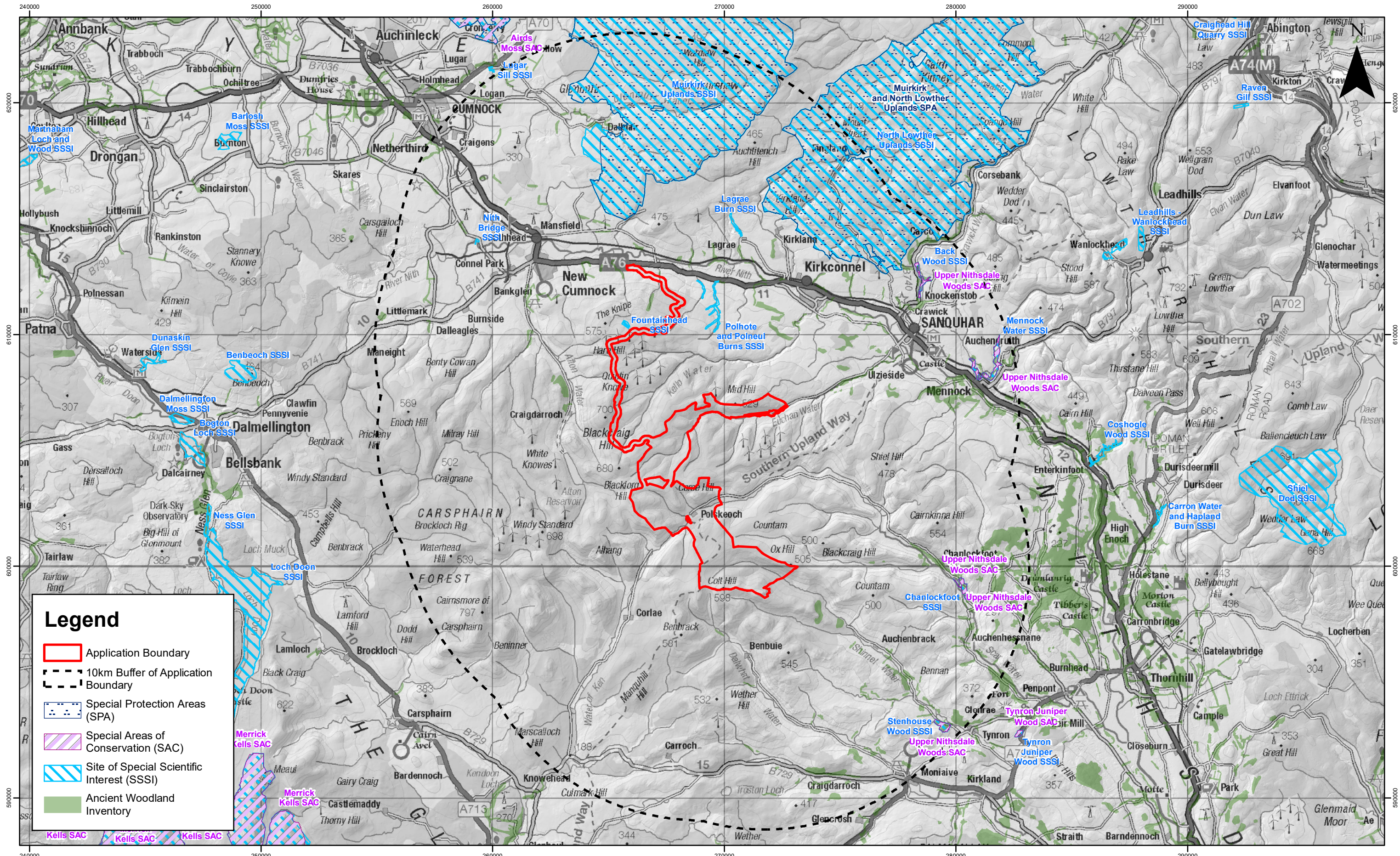
Abbreviation	Full designation	Type	Description
AYR-LBAP	Ayrshire Local Biodiversity Action Plan key species	Local	
Bern-A3	Bern Convention Appendix 3	International	Special protection through 'appropriate and necessary legislative and administrative measures', of the listed wild fauna species.
DGLBAP09	Dumfries and Galloway Local Biodiversity Action Plan Priority Species	Local	Species which have been identified as Priority Species in the Dumfries and Galloway Local Biodiversity Action Plan due to their i) National importance, ii) Local importance in a national context, iii) Local rarity, iv) Local decline or v) Local distinctiveness
HabRegs2	The Conservation (Natural Habitats, &c.) Regulations 1994 (as amended in Scotland) (Schedule 2)	National Legislation	Schedule 2- European protected species of animals.
HabRegs4	The Conservation (Natural Habitats, &c.) Regulations 1994 (as amended in Scotland) (Schedule 4)	Legislation	Schedule 4- Animals which may not be taken or killed in certain ways
HabRegs5	The Conservation (Natural Habitats, &c.) Regulations 1994 (as amended in Scotland) (Schedule 5)	National Legislation	Schedule 5- European protected species of plants.
Protection of Badgers Act (1992)	Protection of Badgers Act (1992)	National Legislation	The Protection of Badgers Act 1992 protects badgers from taking, injuring, killing, cruel treatment, selling, possessing, marking and having their setts interfered with, subject to exceptions.
ScotBL	Scottish Biodiversity List of species of principal importance for biodiversity conservation	National	The Scottish Biodiversity List is a list of flora, fauna and habitats considered by the Scottish Ministers to be of principal importance for biodiversity conservation. The development of the list has been a collaborative effort involving a great many stakeholders.

Abbreviation	Full designation	Type	Description
UKBAP	UK Biodiversity Action Plan priority species	UK BAP	The UK List of Priority Species and Habitats contains 1150 species and 65 habitats that have been listed as priorities for conservation action under the UK Biodiversity Action Plan (UK BAP). The UKBAP is no longer extant but many of the priority habitats and species remain conservation priorities.
VC72RPR	Dumfriesshire Rare Plant Register	Local	Species listed in the VC rare plant register
VC75RPR	Ayrshire Rare Plant Register	Local	Species listed in the VC rare plant register
WCA5/9.1k/l	Wildlife and Countryside Act 1981 (as amended in Scotland)_(Schedule 5 Section 9.1 (killing/injuring))	National Legislation	Section 9.1. Animals which are protected from intentional killing or injuring.
WCA5/9.1t	Wildlife and Countryside Act 1981 (as amended in Scotland) (Schedule 5 Section 9.1 (taking))	National Legislation	Section 9.1 Animals which are protected from taking.
WCA5/9.2	Wildlife and Countryside Act 1981 (as amended in Scotland) (Schedule 5 Section 9.2)	National Legislation	Section 9.2 Animals which are protected from being possessed or controlled (live or dead).
WCA5/9.4a	Wildlife and Countryside Act 1981 (as amended in Scotland) (Schedule 5 Section 9.4, subdivision a)	National Legislation	Section 9.4 subdivision a - Animals which are protected from intentional damage or destruction to any structure or place used for shelter or protection.
WCA5/9.4b	Wildlife and Countryside Act 1981 (as amended in Scotland) (Schedule 5 Section 9.4b)	National Legislation	Section 9.4 Animals which are protected from intentional disturbance while occupying a structure or place used for shelter or protection.

Abbreviation	Full designation	Type	Description
WCA5/9.4c	Wildlife and Countryside Act 1981 (as amended in Scotland) (Schedule 5 Section 9.4c)	National Legislation	Animals which are protected from their access to any structure or place which they use for shelter or protection being obstructed.
WCA5/9.5a	Wildlife and Countryside Act 1981 (as amended in Scotland) (Schedule 5 Section 9.5a)	National Legislation	Section 9.5 Animals which are protected from being sold, offered for sale or being held or transported for sale either live or dead, whole or part.
WCA5/9.5b	Wildlife and Countryside Act 1981 (as amended in Scotland) (Schedule 5 Section 9.5b)	National Legislation	Section 9.5 Animals which are protected from being published or advertised as being for sale.
WCA8	Wildlife and Countryside Act 1981 (as amended in Scotland) (Schedule 8)	National Legislation	Plants which are protected from intentional picking, uprooting or destruction (Section 13 1a); selling, offering for sale, possessing or transporting for the purpose of sale (live or dead, part or derivative) (Section 13 2a); advertising (any of these) fo
WCA9/INV	Wildlife and Countryside Act 1981 (as amended in Scotland) (Schedule 9)	National Legislation	Includes all non-native species listed in Schedule 9 (parts 1 and 2) covering animals and plants which may not be released or allowed to escape into the wild plus additional invasive non-native species.

APPENDIX 02

Figure 8.1.1:
Statutory Designated Sites and Ancient Woodland within 10 km



Legend

- Application Boundary
- 10km Buffer of Application Boundary
- Special Protection Areas (SPA)
- Special Areas of Conservation (SAC)
- Site of Special Scientific Interest (SSSI)
- Ancient Woodland Inventory



Rev	Date	By	Comment
A	16/10/20	AA	First Issue

1:150,000
Scale @ A3

© Crown Copyright 2019. All rights reserved.
Ordnance Survey Licence 0100031673.
Contains SNH information licensed under the Open Government Licence v3.0

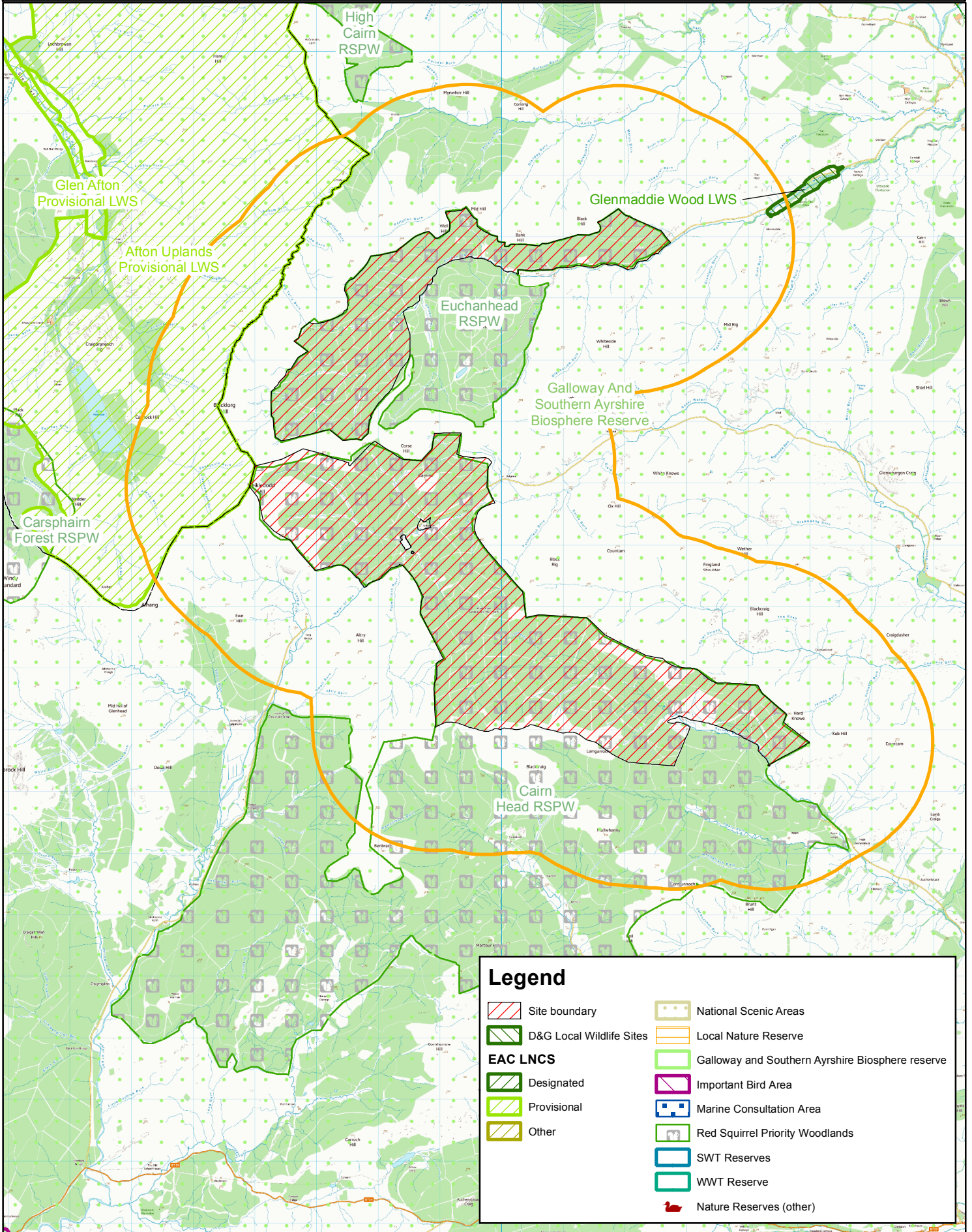
Eucharhead Renewable Energy Development EIAR
Desk Study Report
Ecological Context Map

Drg No	00481.00052.0300.0	
Rev	A	Datum: OSGB36
Date	16/10/20	Projection: TM
Figure	8.1.1	

APPENDIX 03

Non-statutory Sites, Designations and Consultation Zones (provided by SWSEIC)

Non-statutory sites, designations and consultation zones



EUROPEAN OFFICES

United Kingdom

AYLESBURY

T: +44 (0)1844 337380

BELFAST

T: +44 (0)28 9073 2493

BRADFORD-ON-AVON

T: +44 (0)1225 309400

BRISTOL

T: +44 (0)117 906 4280

CARDIFF

T: +44 (0)29 2049 1010

CHELMSFORD

T: +44 (0)1245 392170

EDINBURGH

T: +44 (0)131 335 6830

EXETER

T: + 44 (0)1392 490152

GLASGOW

T: +44 (0)141 353 5037

GUILDFORD

T: +44 (0)1483 889800

LONDON

T: +44 (0)203 805 6418

MAIDSTONE

T: +44 (0)1622 609242

MANCHESTER

T: +44 (0)161 872 7564

NEWCASTLE UPON TYNE

T: +44 (0)191 261 1966

NOTTINGHAM

T: +44 (0)115 964 7280

SHEFFIELD

T: +44 (0)114 245 5153

SHREWSBURY

T: +44 (0)1743 23 9250

STIRLING

T: +44 (0)1786 239900

WORCESTER

T: +44 (0)1905 751310

Ireland

DUBLIN

T: + 353 (0)1 296 4667

France

GRENOBLE

T: +33 (0)6 23 37 14 14